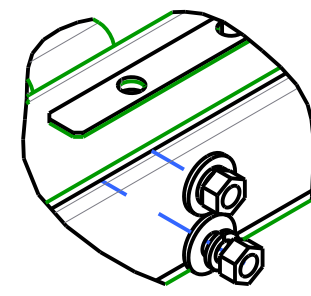
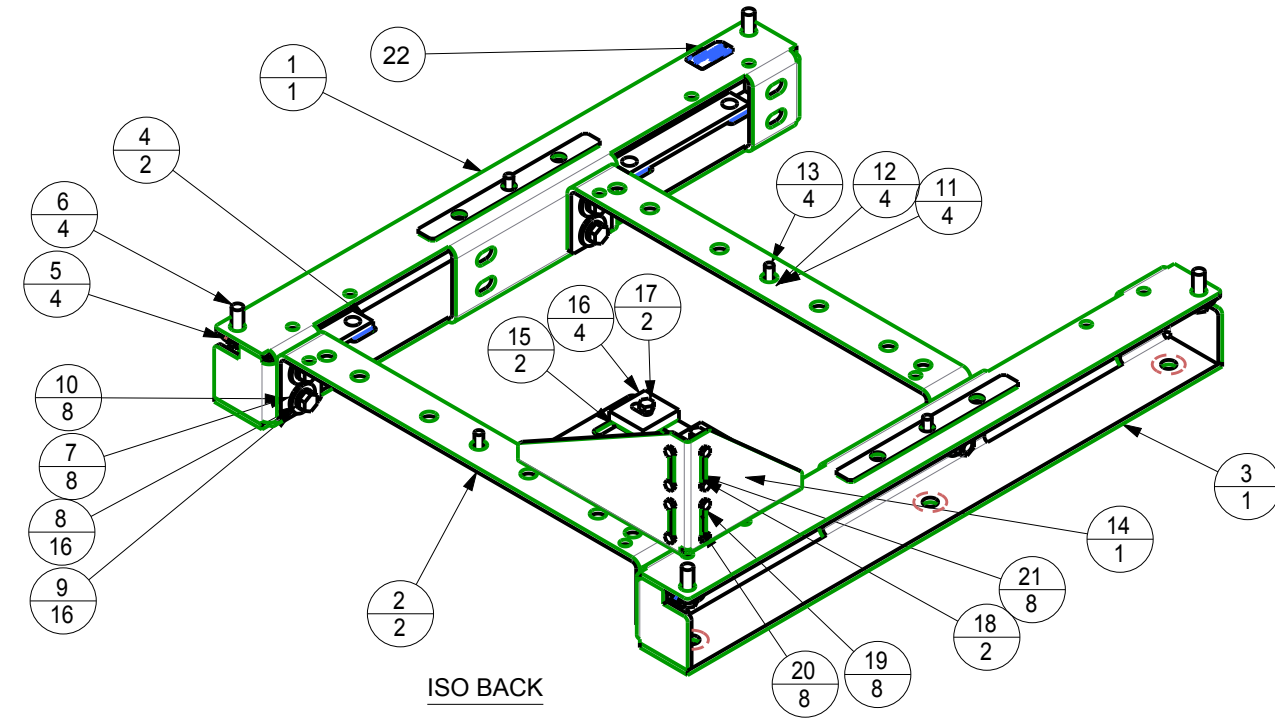
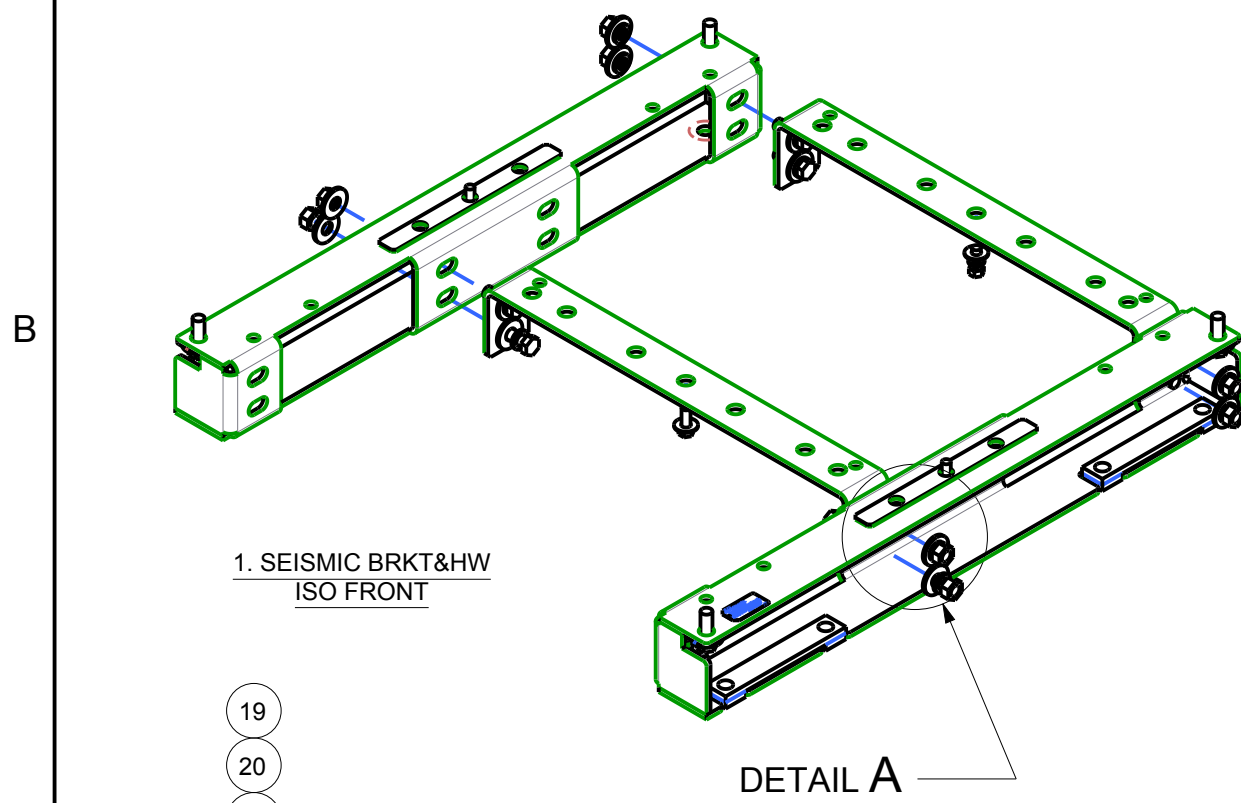


ALL TECHNICAL INFORMATION CONTAINED IN THIS DOCUMENT IS THE EXCLUSIVE PROPERTY OF SCHNEIDER ELECTRIC INDUSTRIES SAS AND MAY NEITHER BE USED NOR DISCLOSED WITHOUT ITS PRIOR WRITTEN CONSENT.

REVISIONS				
ZONE	REV	DESCRIPTION	DATE	APPROVED
	01	NEW RELEASE	01/16/13	DL



ITEM	PART NUMBER	DESCRIPTION	QTY
22	884-0106	TAG SEISMIC FOR MGE GALAXY SERIES	1
21	04-53013	NUT CONICAL KEPS 1/4-20	8
20	04-73317	WASHER FLAT 1/4 SAE	8
19	04-73536	SCREW 1/4-20x.75 HH CS GD5	8
18	04-73410	NUT 3/8-16 HEX	2
17	04-73527	SCREW .38-16 X2.25 HH CS GD5	2
16	71-505496-00	ANTI VIBRATION PAD	4
15	71-505426-01	SPACER XFMR MNT 2 1/4 X 1 3/4	2
14	71-174293-00	BRKT MTG XFMR	1
13	04-73522	SCREW MACH 3/8-16X1.00 HH CS	1
12	04-73330	WASHER SPLIT LOCK 3/8	1
11	04-73328	WASHER FLAT 3/8 USS	1
10	04-73415	NUT 3/8-16 HEX	1
9	04-73340	WASHER FLAT 1/2 USS	2
8	04-73342	WASHER SPLIT LOCK 1/2	2
7	04-73512	BOLT .50-13 X.1.5 HH CS GD5	1
6	04-73512	BOLT .50-13 X.1.5 HH CS GD5	1
5	04-73340	WASHER FLAT 1/2 USS	1
4	870-23158	BRACKET STRAP SEISMIC STS	2
3	870-17335	SEISMIC BRACKET WITH STRAP ASSY-G5K DIST	1
2	870-23155	TRANSPORTATION WEDGE - G5K DISTRIBUTION	2
1	870-23157	SEISMIC BRACKET WITH STRAP ASSY-G5K DIST	1

PARTS LIST

SEISMIC KIT ASSEMBLY INSTRUCTION

- A
- ASSEMBLE (2) 870-23155 TO 870-23157 WITH 1/2X1.5" BOLT, WASHER, LK WSHR, NUT IN 8 PLACES. TIGHTEN LOOSELY
 - ASSEMBLE 870-17335 TO (2) 870-23155 WITH 1/2X1.5" BOLT, WASHER, LK WASHER, NUT. TIGHTEN LOOSELY.
 - ASSEMBLE THIS SEISMIC ASSEMBLY TO FRAME AT 4 CORNERS WITH 1/2 HW AND 3/8 HW IN THE MIDDLE, 6 PLACES, TIGHTEN LOOSELY.
 - ASSEMBLE 3/8 HW (BOLT, WASHER) FROM BRACKETS TO FRAME IN 5 PL, TIGHTEN LOOSELY. TIGHTEN 8 1/2 BOLTS LINKING TRANSPORTATION WEDGE TO THE BRACKET PER SPECIFICATION THEN TIGHTEN ALL REMAINING 1/2 AND 3/8 BOLTS TO FRAME PER SPECIFICATION
 - REPLACING EXISITING KICKPLATES WITH SEISMIC ONES (870-TBD)
 - PUT STRAPS (870-21358) AND TAG CARD BOARD 884-0106 IN A BOX (TBD).
 - PUT THE BOX IN THE CABINET.

NOTES: UNLESS OTHERWISE SPECIFIED.

CONTRACT NO.		 SCHNEIDER ELECTRIC INDUSTRIES SAS Critical Power & Cooling Services Division 1660 Scenic Avenue Costa Mesa, Ca. 92626 U.S.A.		KIT SEISMIC BRKT GALAXY 5000 AUX 28 IN		
APPROVALS	DATE					
DRAWN	H NGUYEN	12/27/12	SIZE	FSCM NO.	DWG. NO.	REV.
CHECKED	C PARENTI	12/27/12	B	9L985	0H-0735	01
MFG ENG	J SMITH	12/27/12	SCALE 0.125	0H-0735.	SHEET 1 OF 1	
ISSUED	D LORIA	12/27/12				