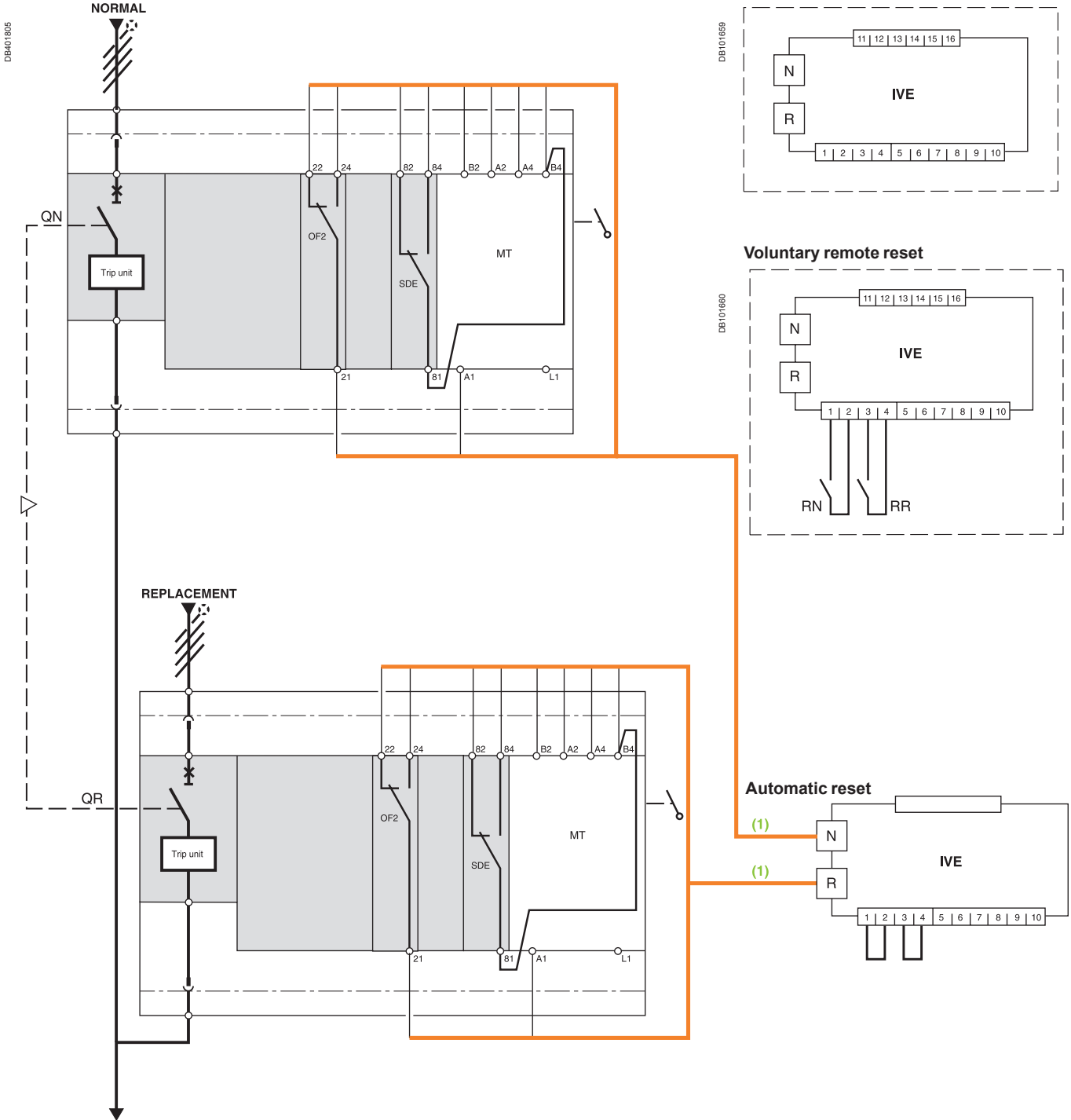


# 2 Compact NSX100/630 devices

## Diagram no. 51201177

### Source-changeover system without automatic-control system

Without auxiliaries for emergency off



(1) Prefabricated wiring: cannot be modified.

#### Legends

- QN "Normal" source Compact NSX equipped with motor mechanism
- QR "Replacement" source Compact NSX equipped with motor mechanism
- SDE "fault-trip" indication contact
- IVE electrical interlocking and terminal block unit
- MT motor mechanism
- OF2 breaker ON/OFF indication contact
- RR reset order for breaker QN
- RR reset order for breaker QR

#### States permitted by mechanical interlocking system

Normal	Replacement
0	0
1	0
0	1

#### Note:

diagram shown with circuits de-energised, circuit breakers open and relays in normal position.