

FA176584: How to read Active Power register of EM1200 via. Modbus Client Software.

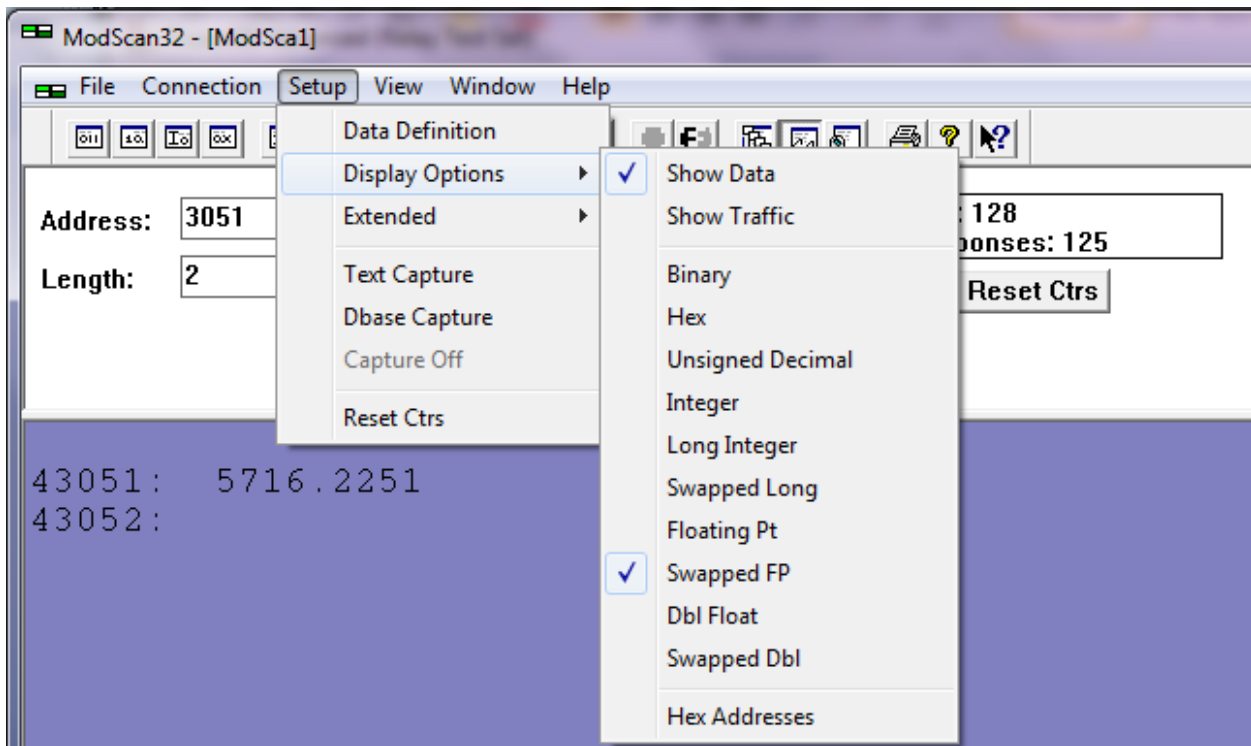
Resolution:

Please refer below screenshot how to read an EM 1200 Energy Meter through Modscan software particularly for Active Power, Active power phase1, Individual as well as in Block.

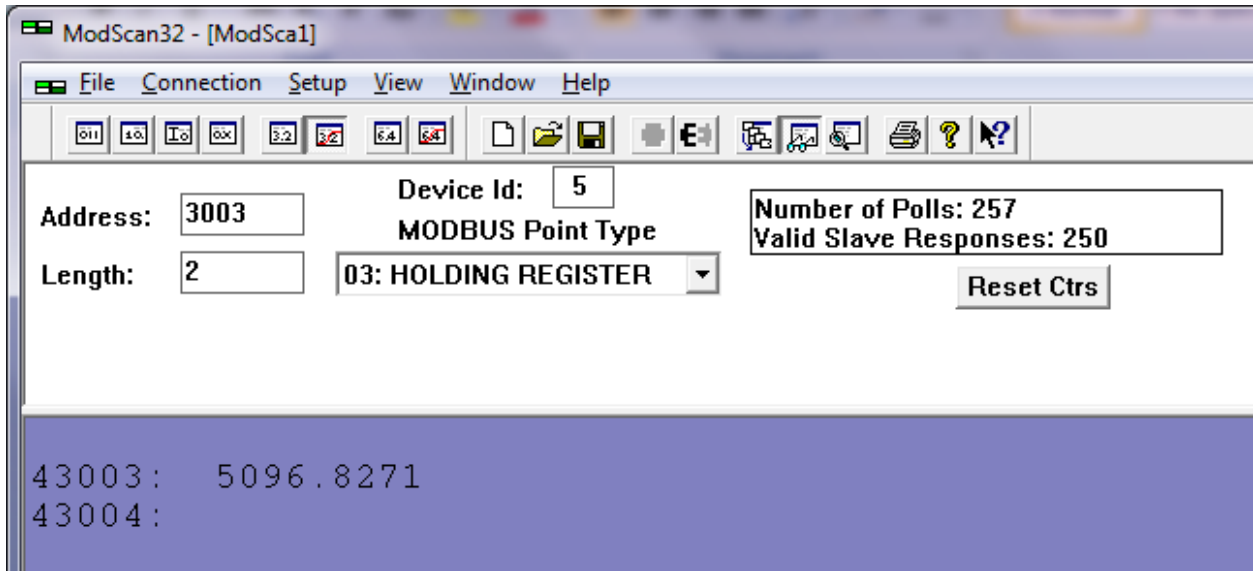
Individual:

Parameter	Description	Address	Data type
Metering			
Metering – Power			
W	Active power, total	3051	Float*
W1	Active power, phase 1	3003	Float*
W2	Active power, phase 2	3019	Float*
W3	Active power, phase 3	3035	Float*

Active Power, Total



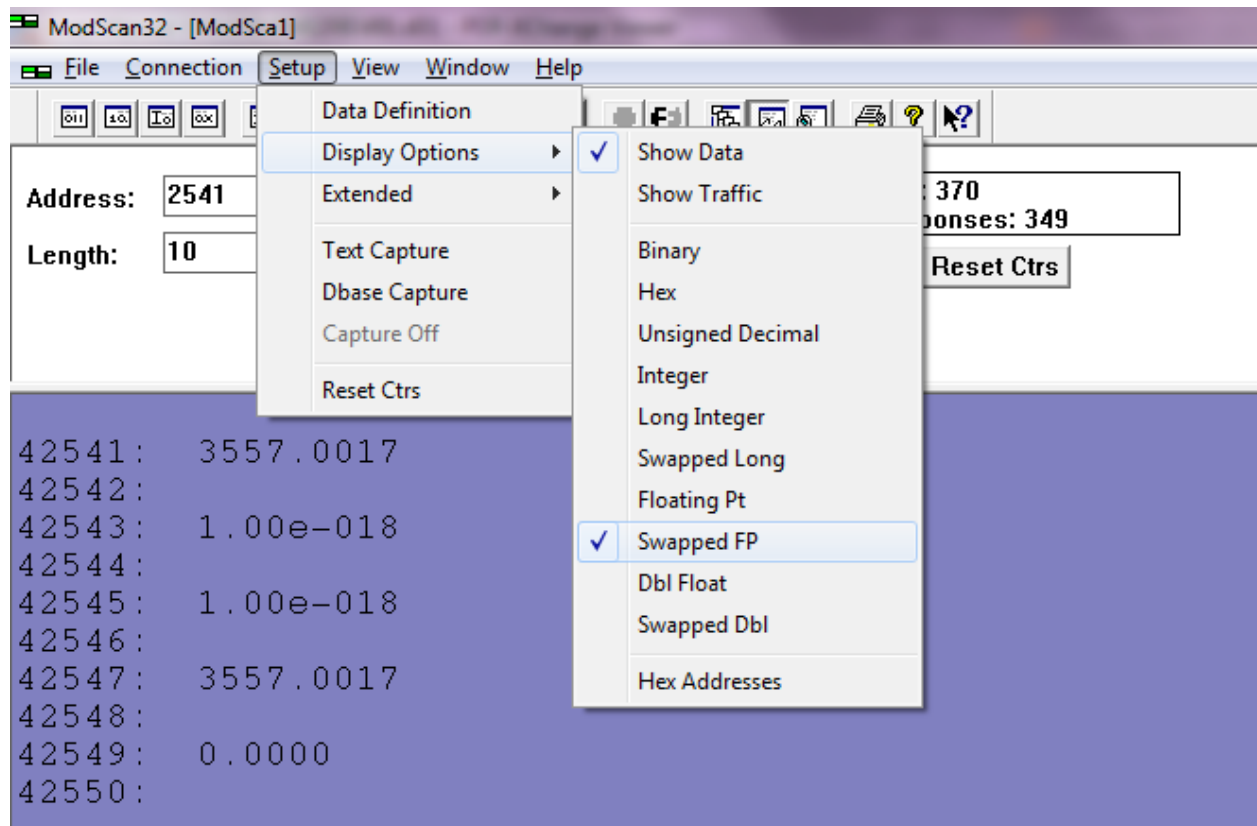
Active Power, Phase 1



Turbo Parameters: (Read as block or individual parameters)

Table 6-4: TURBO parameter address

Parameter	Description	Address	Data type
Metering			
Metering – Power			
W	Active power, total	2547	Float*
W1	Active power, phase 1	2541	Float*
W2	Active power, phase 2	2543	Float*
W3	Active power, phase 3	2545	Float*



Note: Single phase current injection by power source, therefore above registers are displaying Active Power Total and Active Power Phase 1.