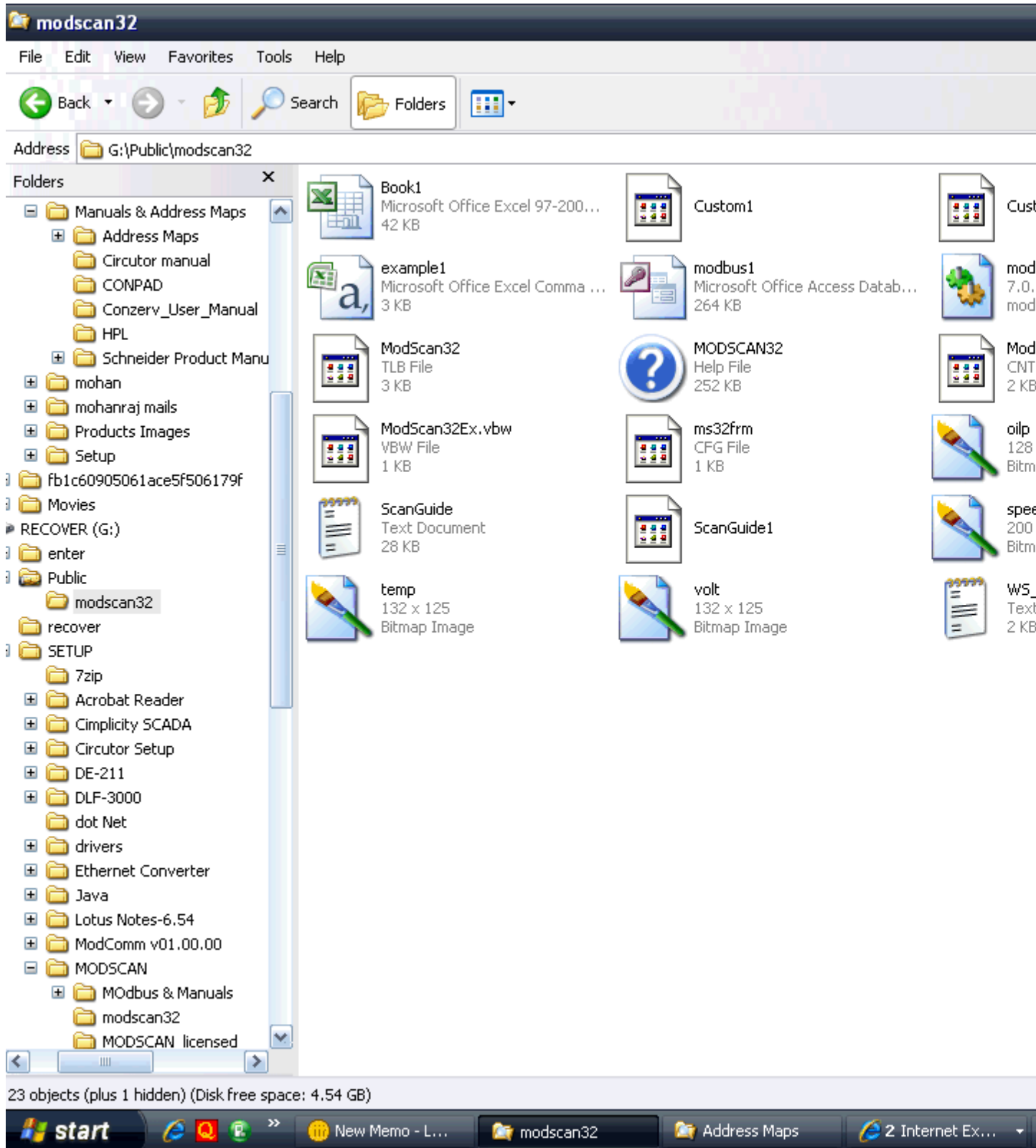


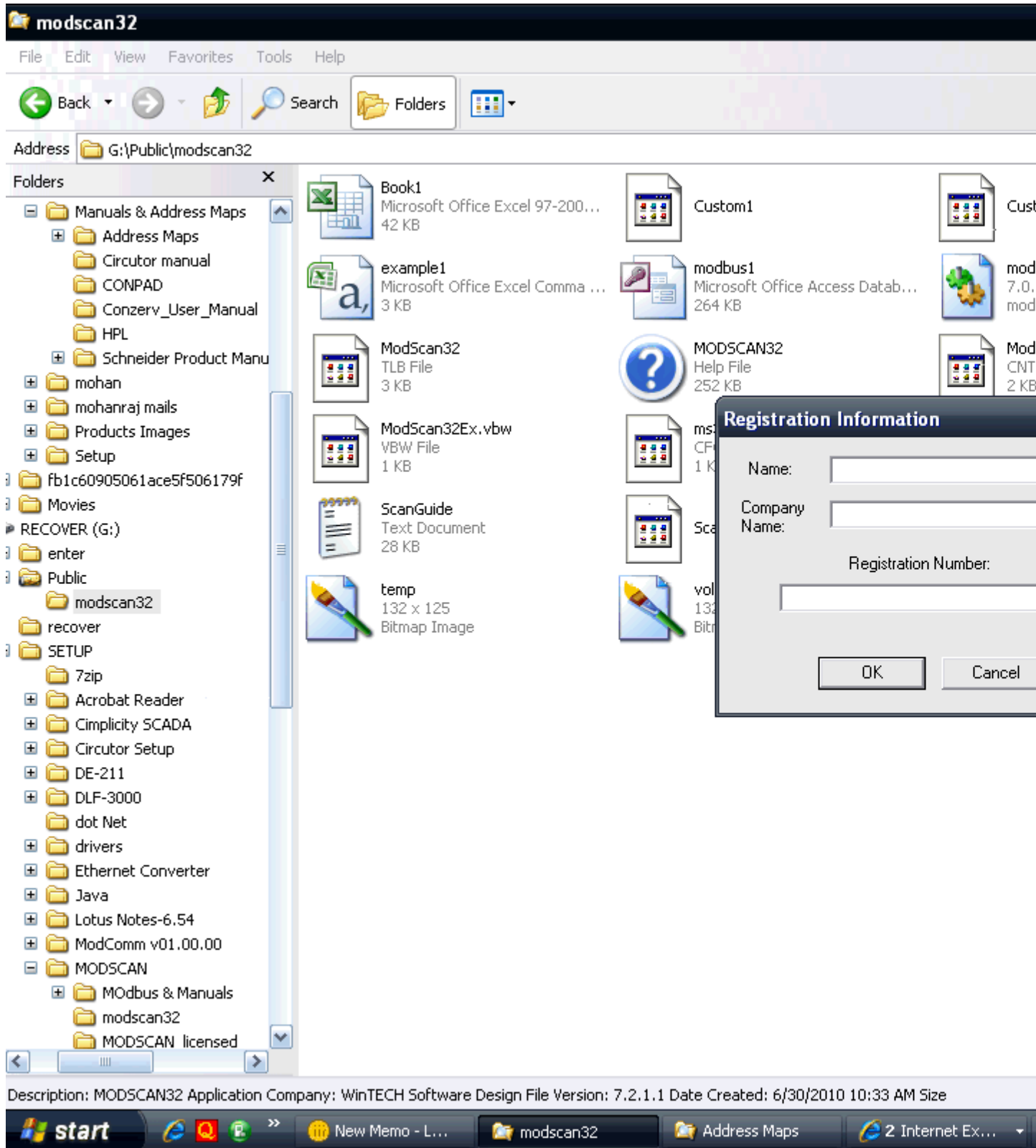
Dear Sir,

The following steps has to be followed

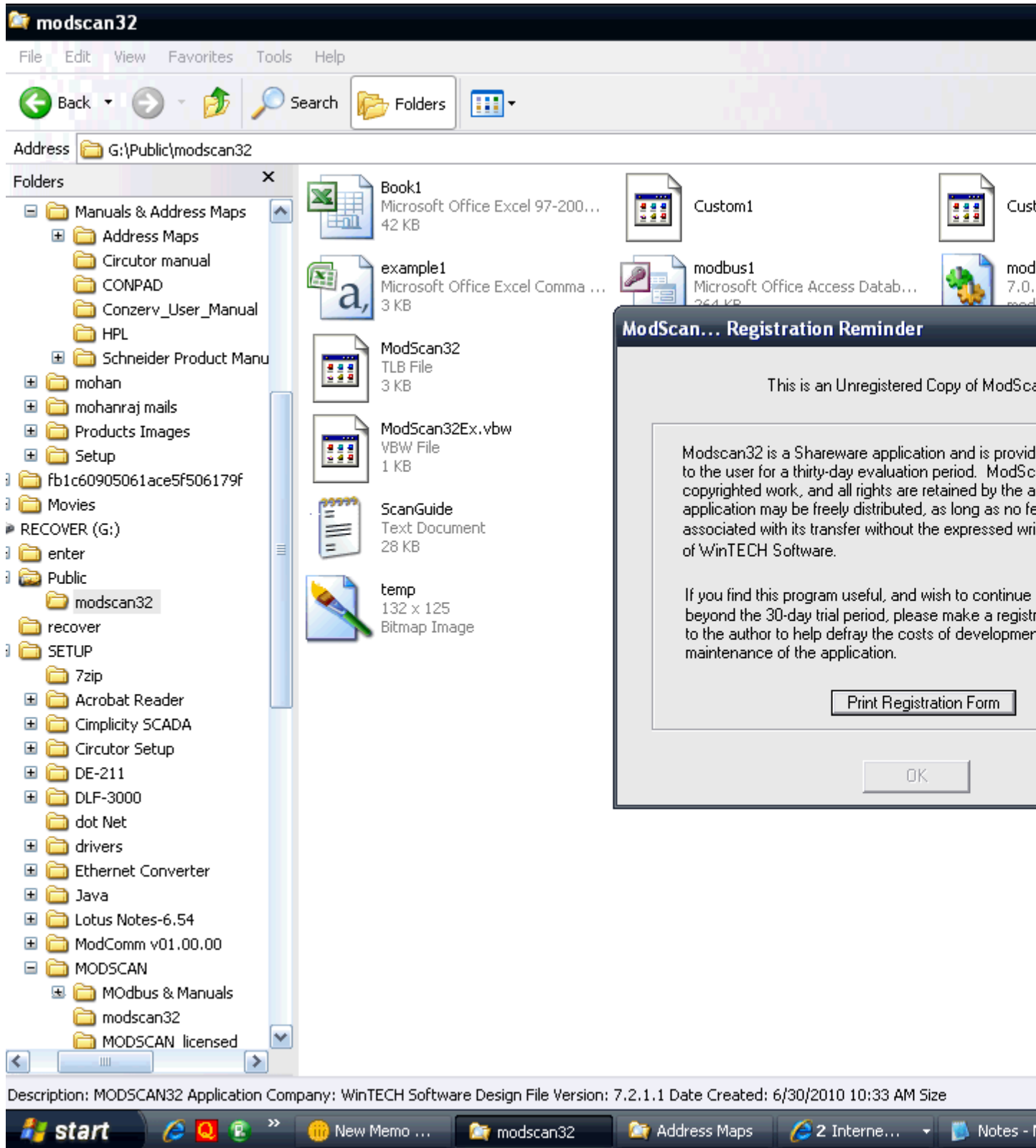
1. Open the attachment (since it is having Swapped Long Datatype)
2. Doble click the Icon Modscan 32



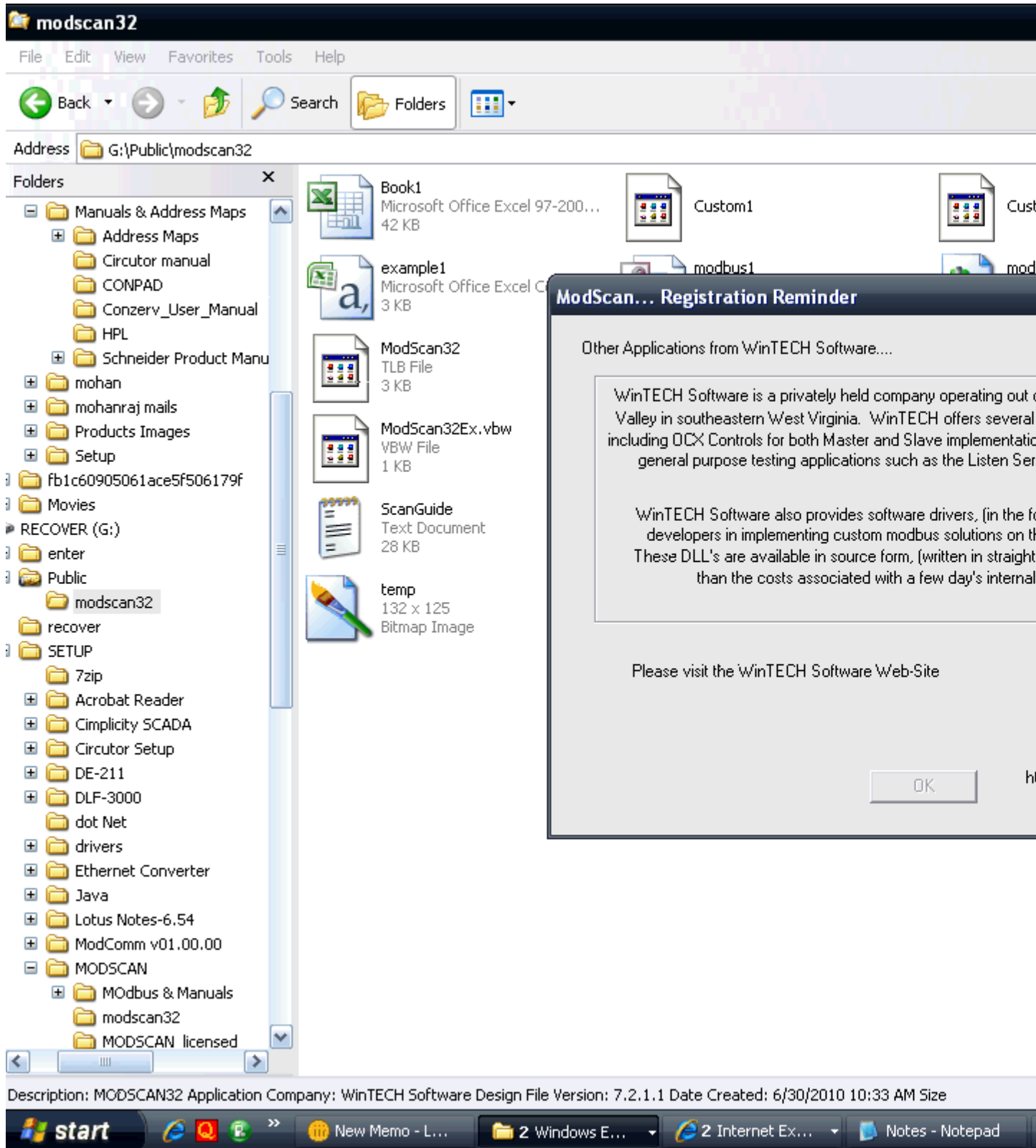
3. Press Esc



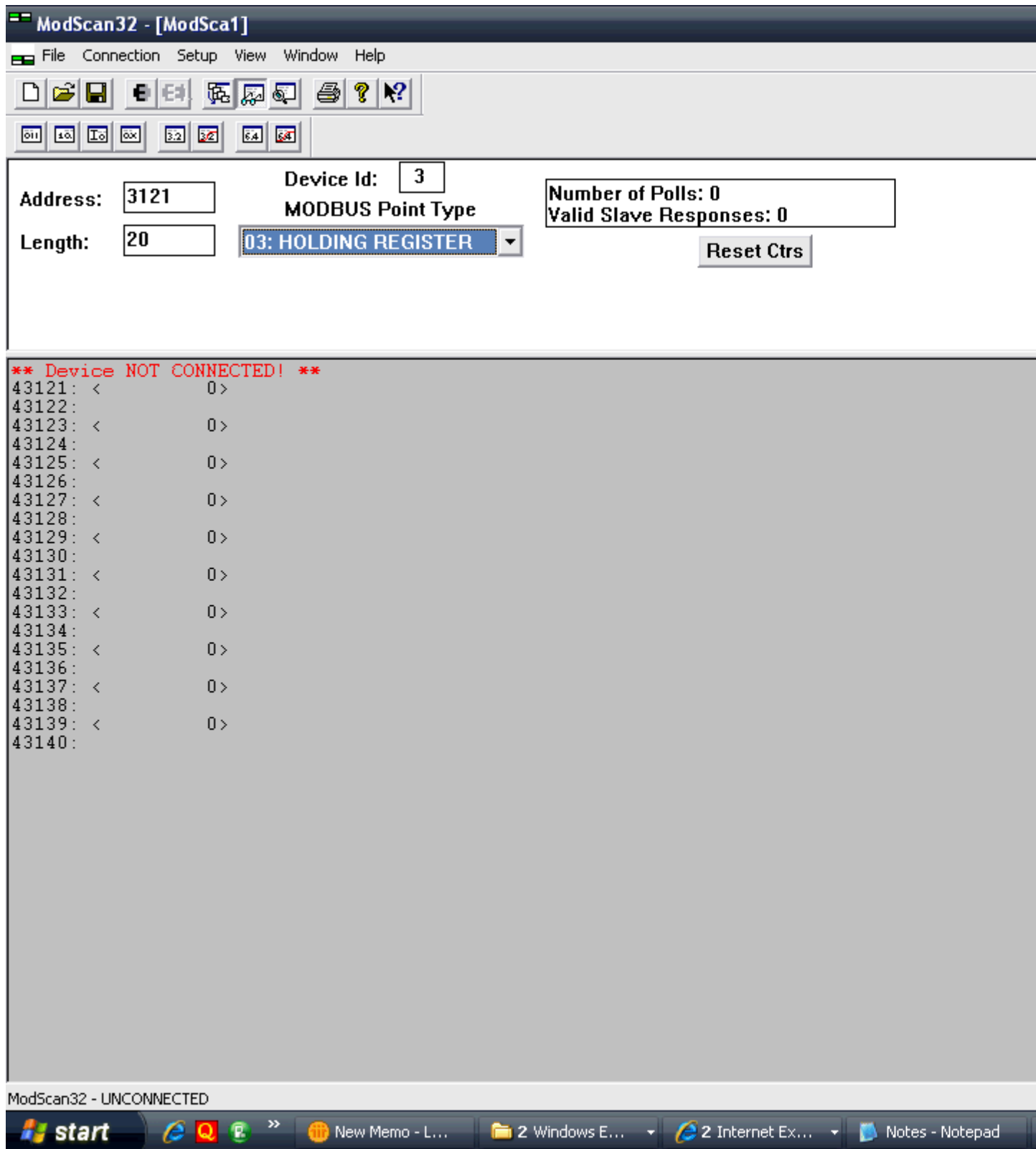
4. Press Esc



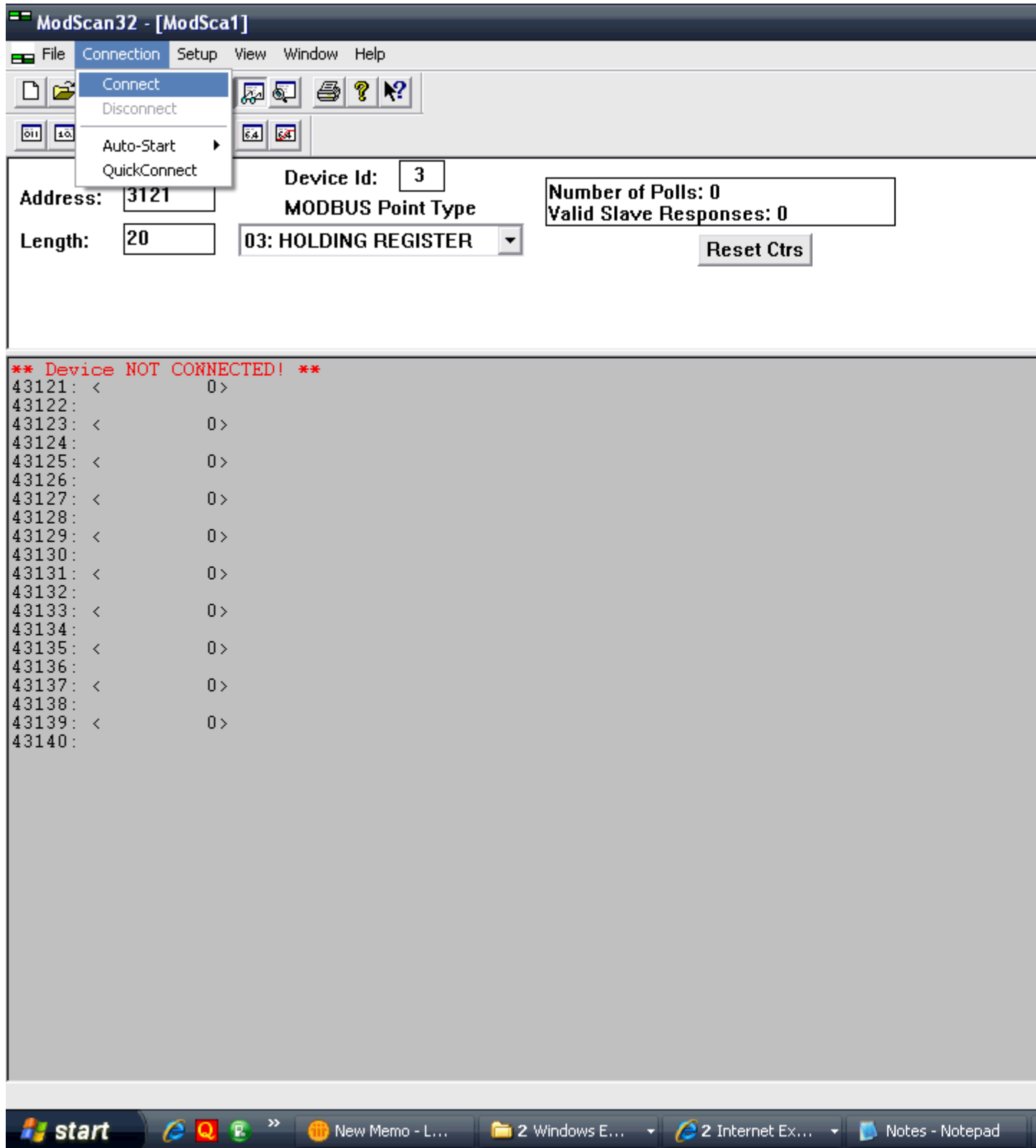
5. Press Esc



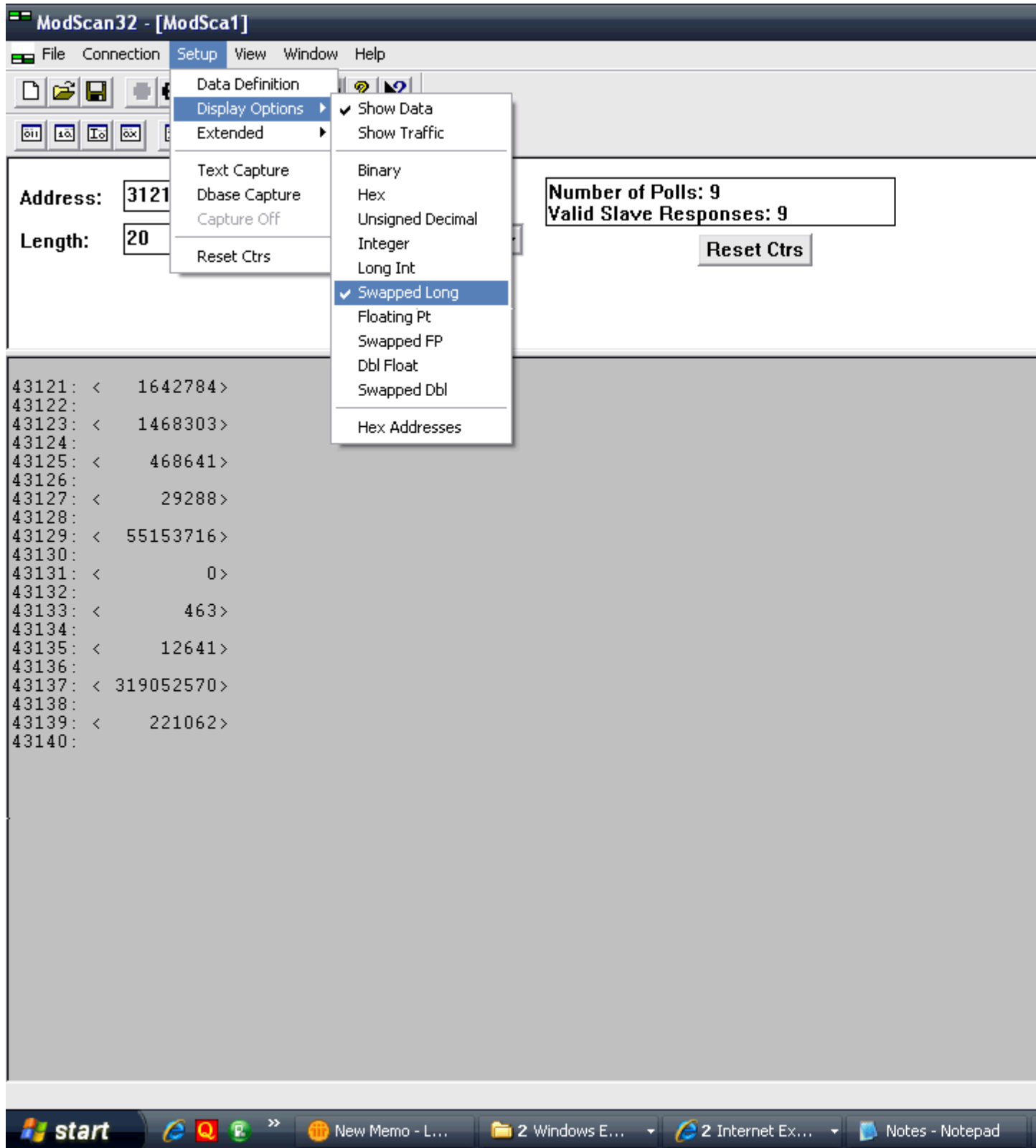
6. Do setting as shown below



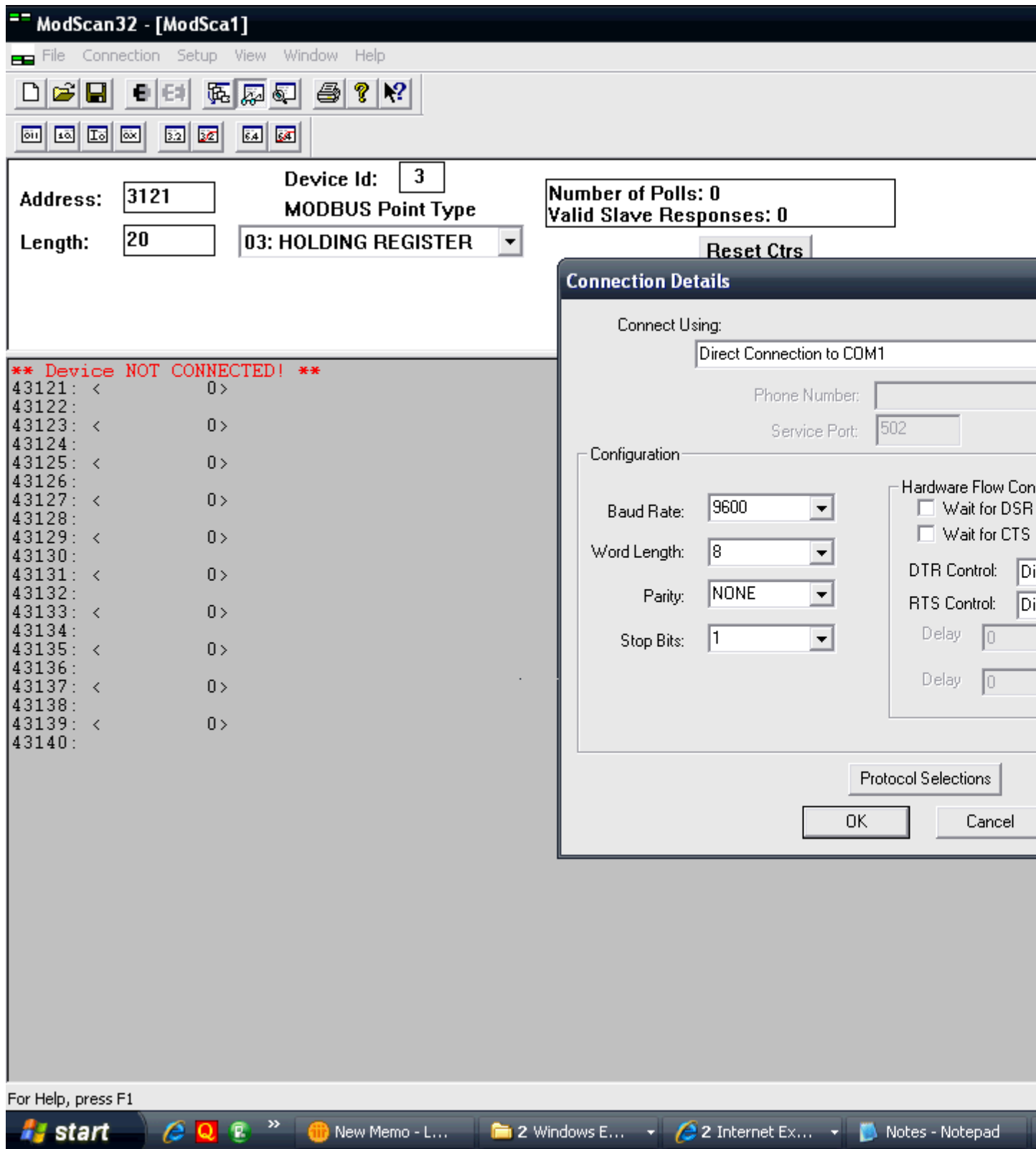
7. Click on Connection



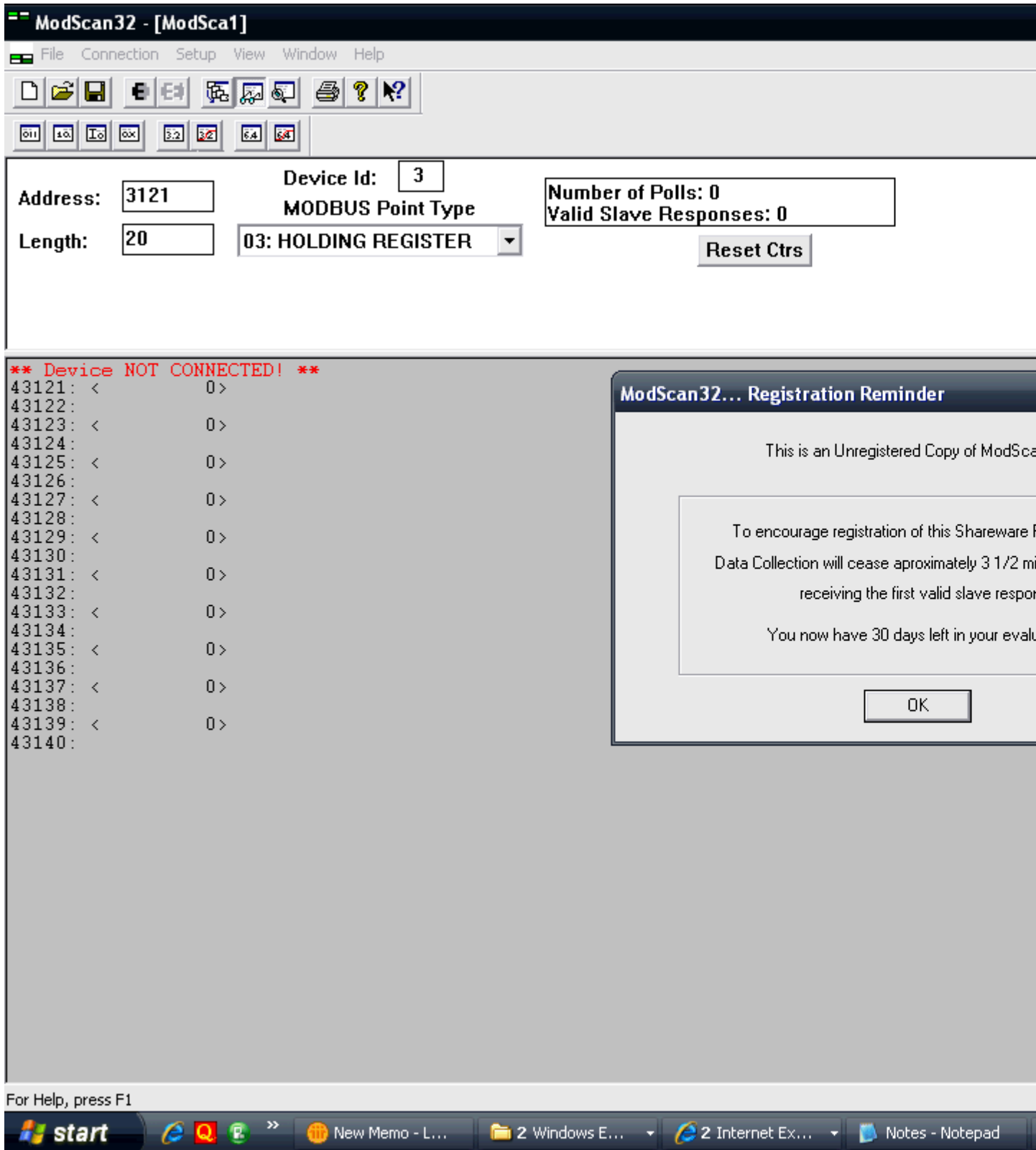
8. Select Swapped Long Datatype



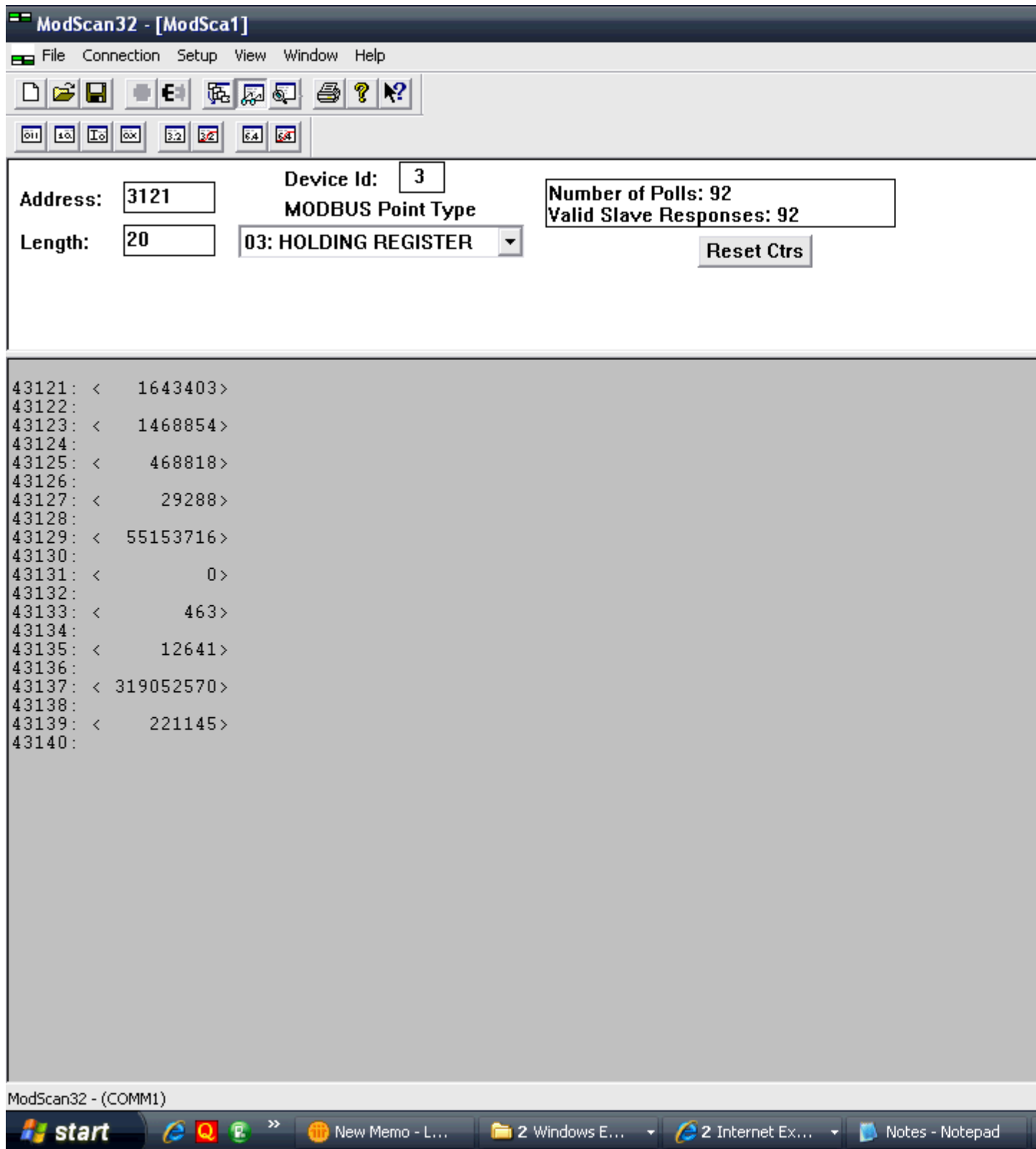
9. Do the Communication Setting



10. Press OK



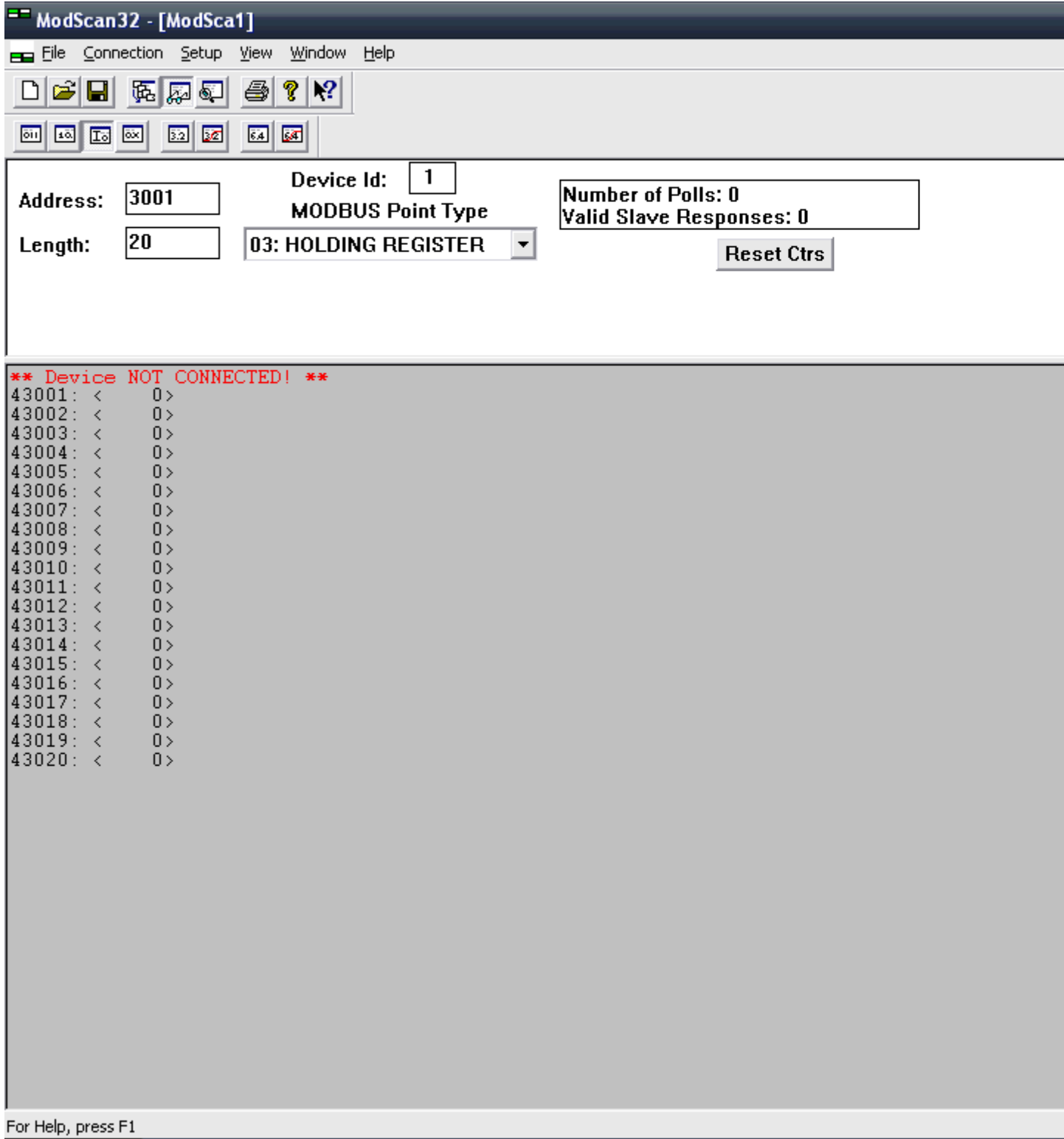
11. U will see the Meter reading as shown in the figure below



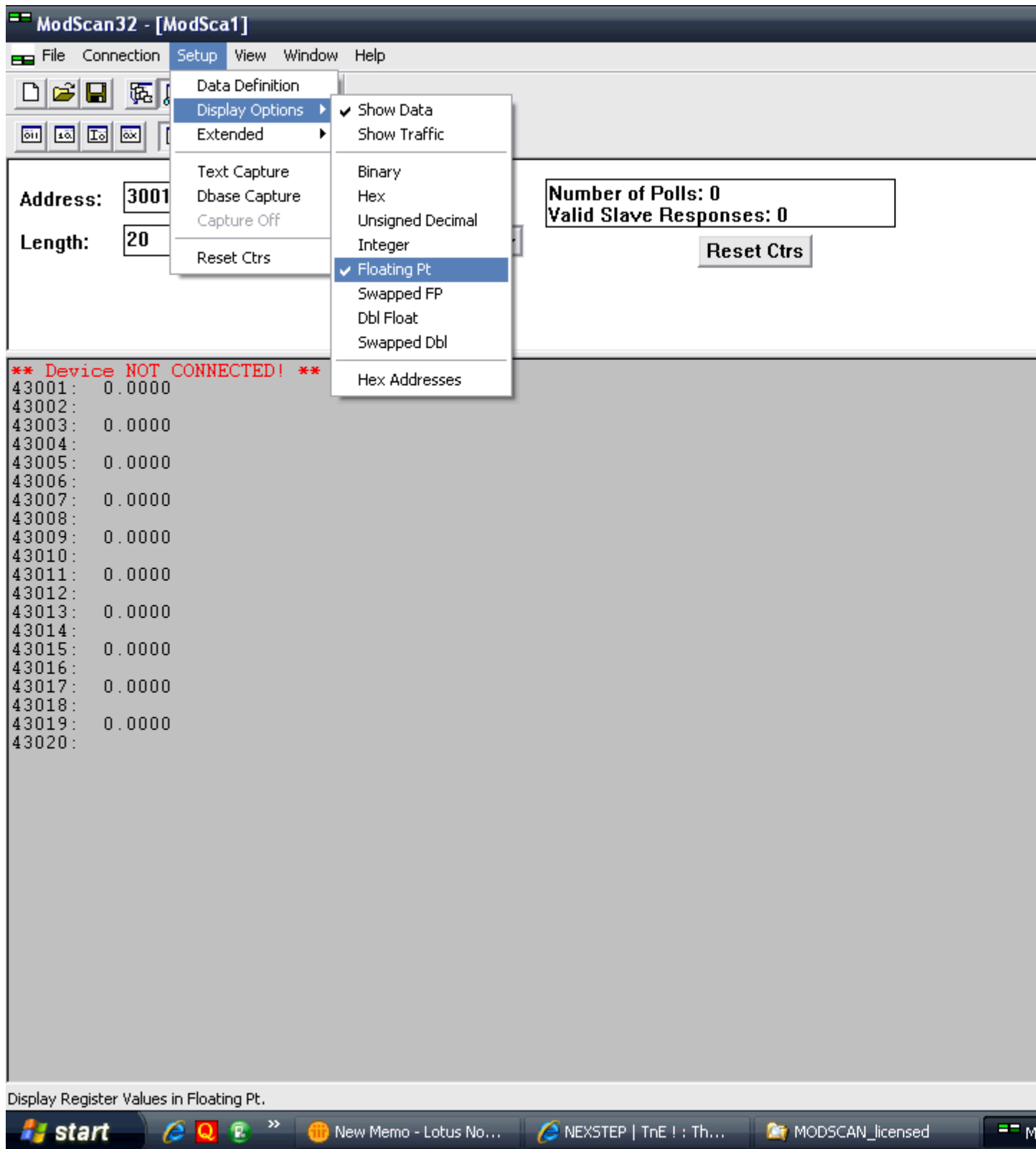
To match Frequency of the Meter

E:g - Frequency Address is **43135** and reading showing in the modscan is **12641**.

The divisible factor is **256**.. then the exaxt value would be **12641/256=49.37** Hz



Data Format Setup



Communication Setup...

The screenshot shows the ModScan32 application window. The title bar reads "ModScan32 - [ModSca1]". The menu bar includes "File", "Connection", "Setup", "View", "Window", and "Help". The toolbar contains icons for file operations and help. The main interface has several input fields: "Address" is set to 3001, "Length" to 20, "Device Id" to 1, and "MODBUS Point Type" to "03: HOLDING REGISTER". "Number of Polls" and "Valid Slave Responses" are both set to 0. A "Reset Ctrs" button is visible. A status window at the bottom left displays the message "** Device NOT CONNECTED! **" followed by a list of addresses from 43001 to 43020, each with a value of 0.0000. A "Connection Details" dialog box is open on the right, showing "Connect Using:" set to "Direct Connection to COM1". The "Configuration" section includes "Baud Rate" (9600), "Word Length" (8), "Parity" (EVEN), and "Stop Bits" (1). The "Hardware Flow Control" section has checkboxes for "Wait for DSR" and "Wait for CTS", both of which are unchecked, with "Delay" fields set to 0. "Protocol Selections" and "OK/Cancel" buttons are also present. The Windows taskbar at the bottom shows the Start button and several open applications: "New Memo - Lotus No...", "NEXSTEP | TrE ! : Th...", and "MODSCAN_licensed".

For Help, press F1

Regards
Ganesh.Odugoudar

This email has been scanned by the MessageLabs Email Security System.
For more information please visit <http://www.messagelabs.com/email>

This email has been scanned by the MessageLabs Email Security System.
For more information please visit <http://www.messagelabs.com/email>

(1) -

<Notes:///65257615002D8335/38D46BF5E8F08834852564B500129B2C/70C43B3563FD283C652577520016FC80>