

How to configure Microsoft Vista, Windows 7 & 8, and Windows Server 2008 & 2012 to use Native UPS Shutdown Power Options

Microsoft Vista, Windows 7 and Server 2008 do not have native serial UPS shutdown. For a serial UPS, PowerChute Business Edition should be used. For any USB connected UPS, Windows does have some configuration for shutdown if you do not want to use the supported APC software options. Once a USB UPS is connected, Windows Vista and Windows 7 adds configuration similar to that of a laptop with an on-board battery. Once this happens, you can set up a desktop or server's power options in the same way as a laptop.

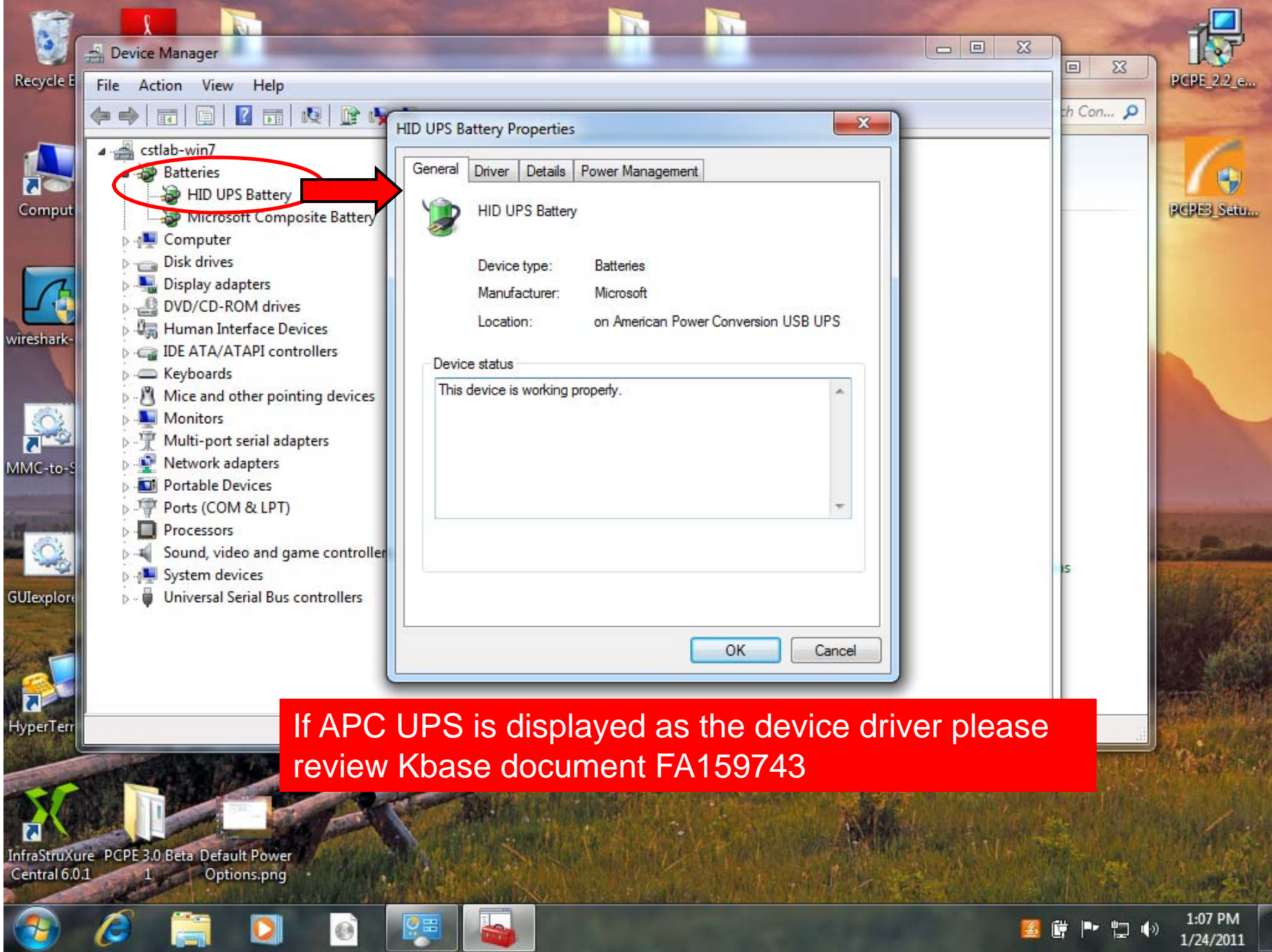
Boot the PC into Windows. Connect the USB cable from the UPS to the PC. The following will appear for about 10 seconds.



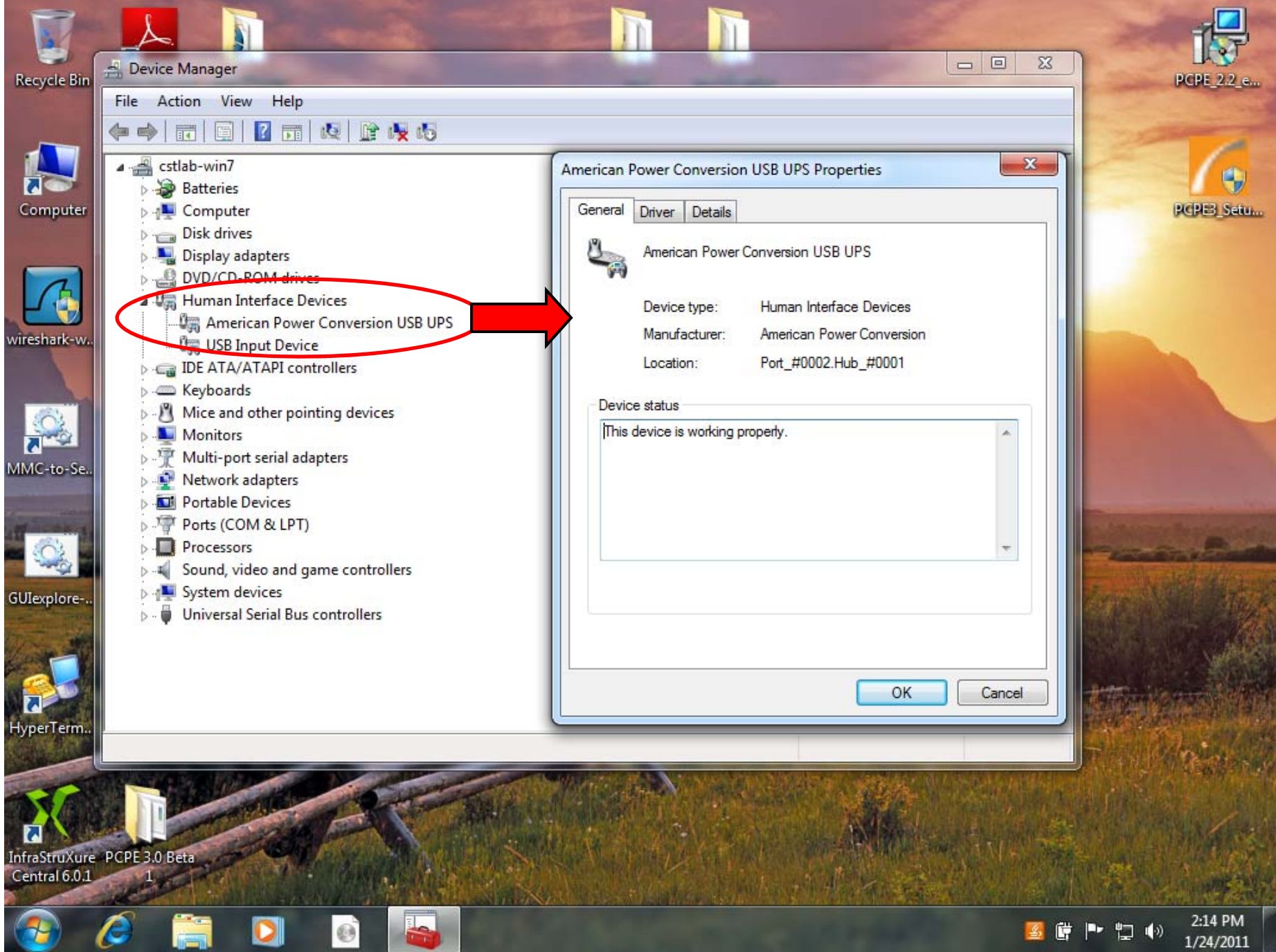
The needed HID drivers are preinstalled with both operating systems, but you can check the installation of the USB UPS by entering device manager.

Start > Control Panel> Device Manager

Once inside device manager, click the plus sign next to “Batteries” and also “Human Interface Devices” There should be a HID UPS Battery listing under “Batteries” and an American Power Conversion USB UPS listing under “Human Interface Devices”, both entries are necessary for the system to operate properly. If the HID UPS Battery entry is missing, verify that the UPS was made in the year 2000 or later. If the American Power Conversion USB UPS entry is missing, verify that the USB cable is connected direct to the computer and that the USB ports are enabled on the system.



If APC UPS is displayed as the device driver please review Kbase document FA159743



Device Manager

File Action View Help

- ← →
- 📄
- ?
- 🔍
- 🔄
- 🗑️
- 🔄

Hardware tree:

- ▶ cslab-win7
 - ▶ Batteries
 - ▶ Computer
 - ▶ Disk drives
 - ▶ Display adapters
 - ▶ DVD/CD-ROM drives
 - ▶ Human Interface Devices
 - ▶ American Power Conversion USB UPS
 - ▶ USB Input Device
 - ▶ IDE ATA/ATAPI controllers
 - ▶ Keyboards
 - ▶ Mice and other pointing devices
 - ▶ Monitors
 - ▶ Multi-port serial adapters
 - ▶ Network adapters
 - ▶ Portable Devices
 - ▶ Ports (COM & LPT)
 - ▶ Processors
 - ▶ Sound, video and game controllers
 - ▶ System devices
 - ▶ Universal Serial Bus controllers

American Power Conversion USB UPS Properties

General Driver Details

American Power Conversion USB UPS

Device type: Human Interface Devices

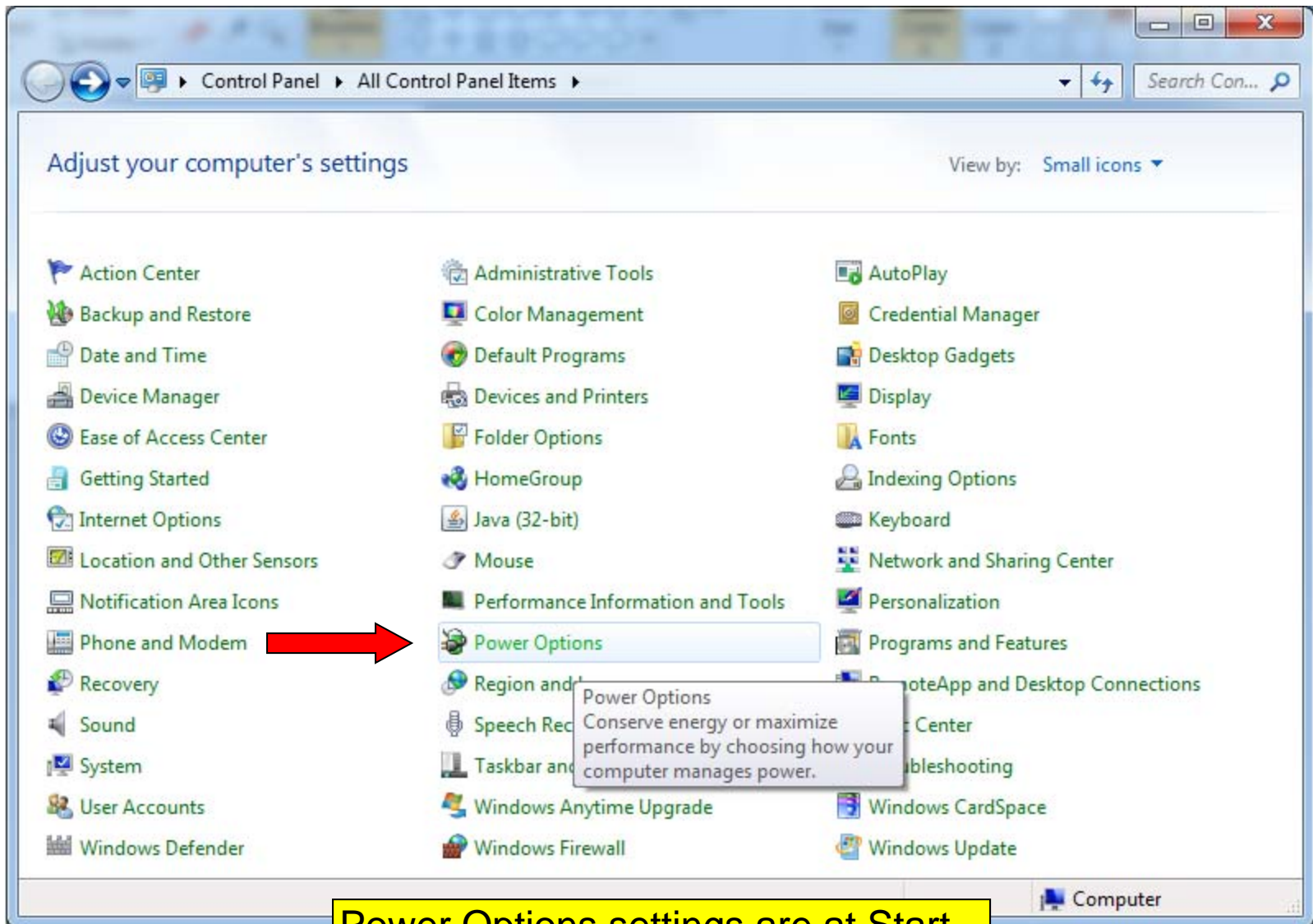
Manufacturer: American Power Conversion

Location: Port_#0002.Hub_#0001

Device status

This device is working properly.

OK Cancel



Power Options settings are at Start – Control Panel – Power Options

Change settings for the plan: My Custom Plan 1

Choose the sleep and display settings that you want your computer to use.

Turn off the display: 2 hours

Put the computer to sleep: Never

[Change advanced power settings](#)

Save changes

Cancel

Power Options settings before
UPS is attached using USB cable





11:35 AM
1/24/2011

Control Panel > All Control Panel Items > Power Options > Edit Plan Settings

Change settings for the plan: My Custom Plan 1

Choose the sleep and display settings that you want your computer to use.

 On battery  Plugged in

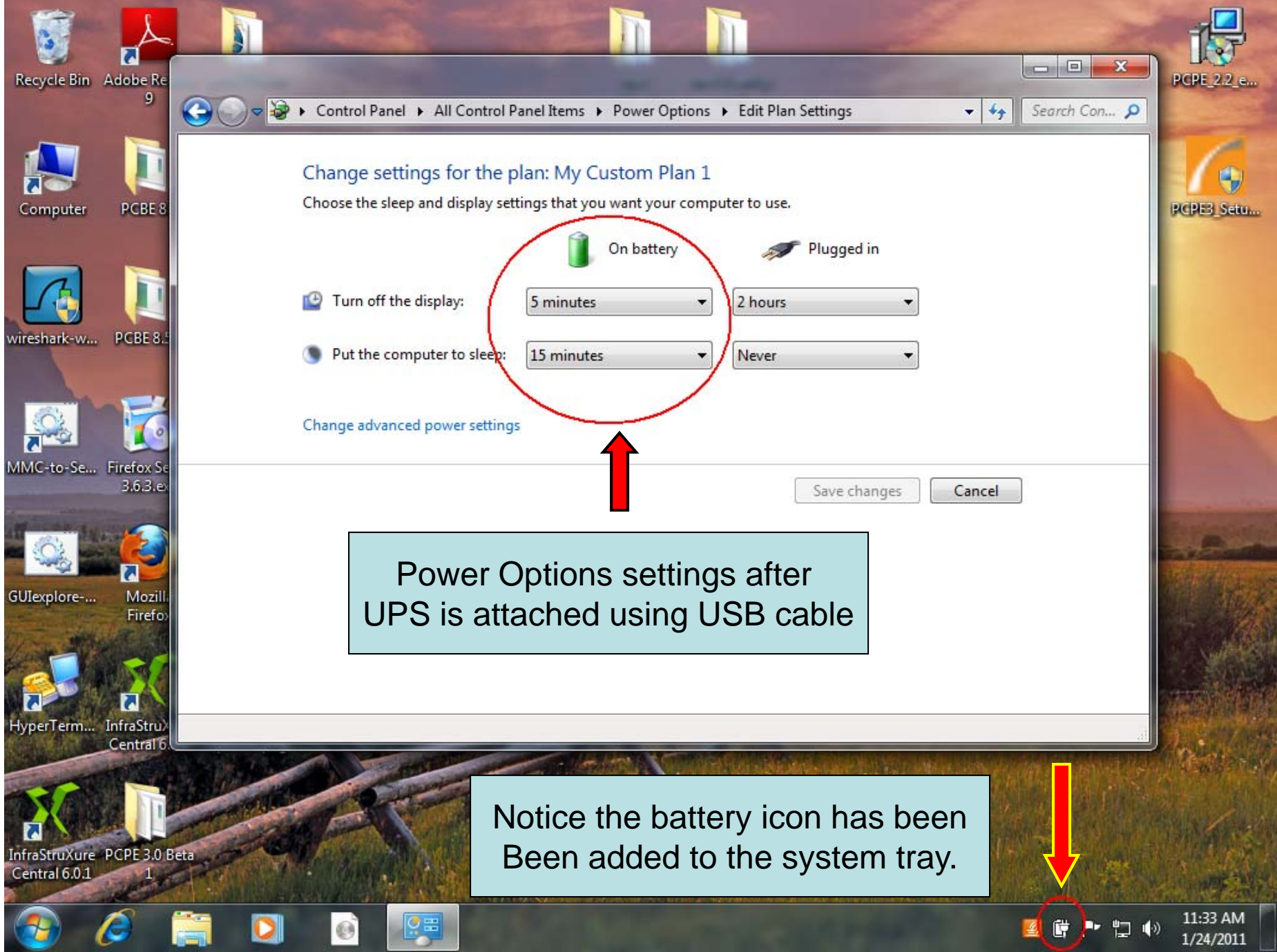
Turn off the display:

Put the computer to sleep:

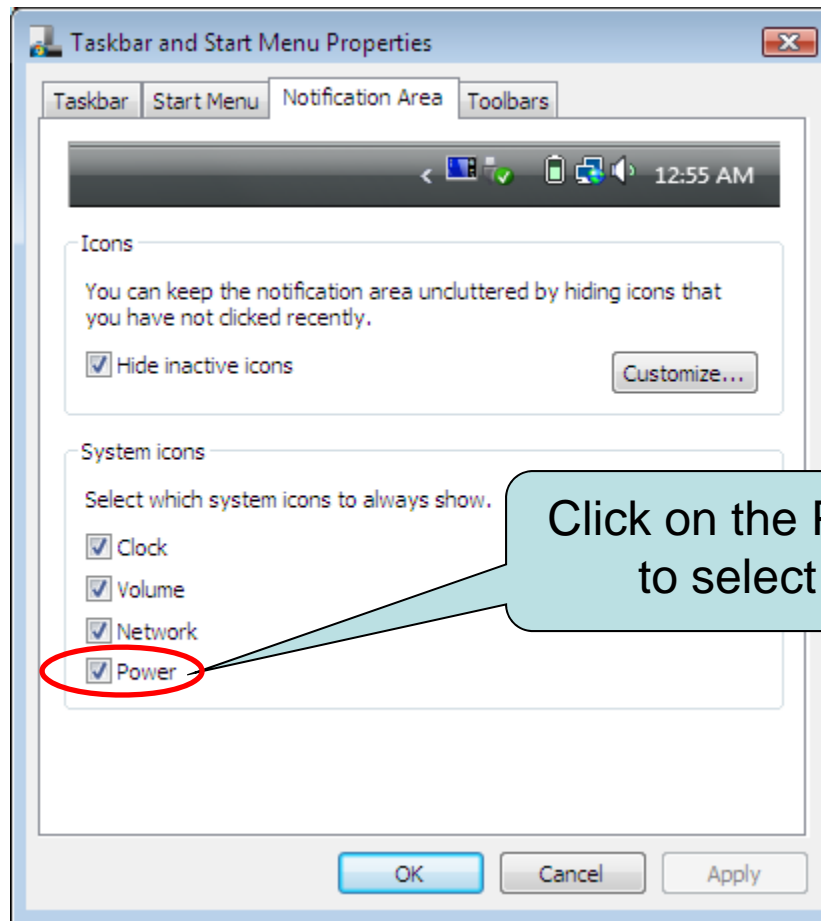
[Change advanced power settings](#)

Power Options settings after
UPS is attached using USB cable

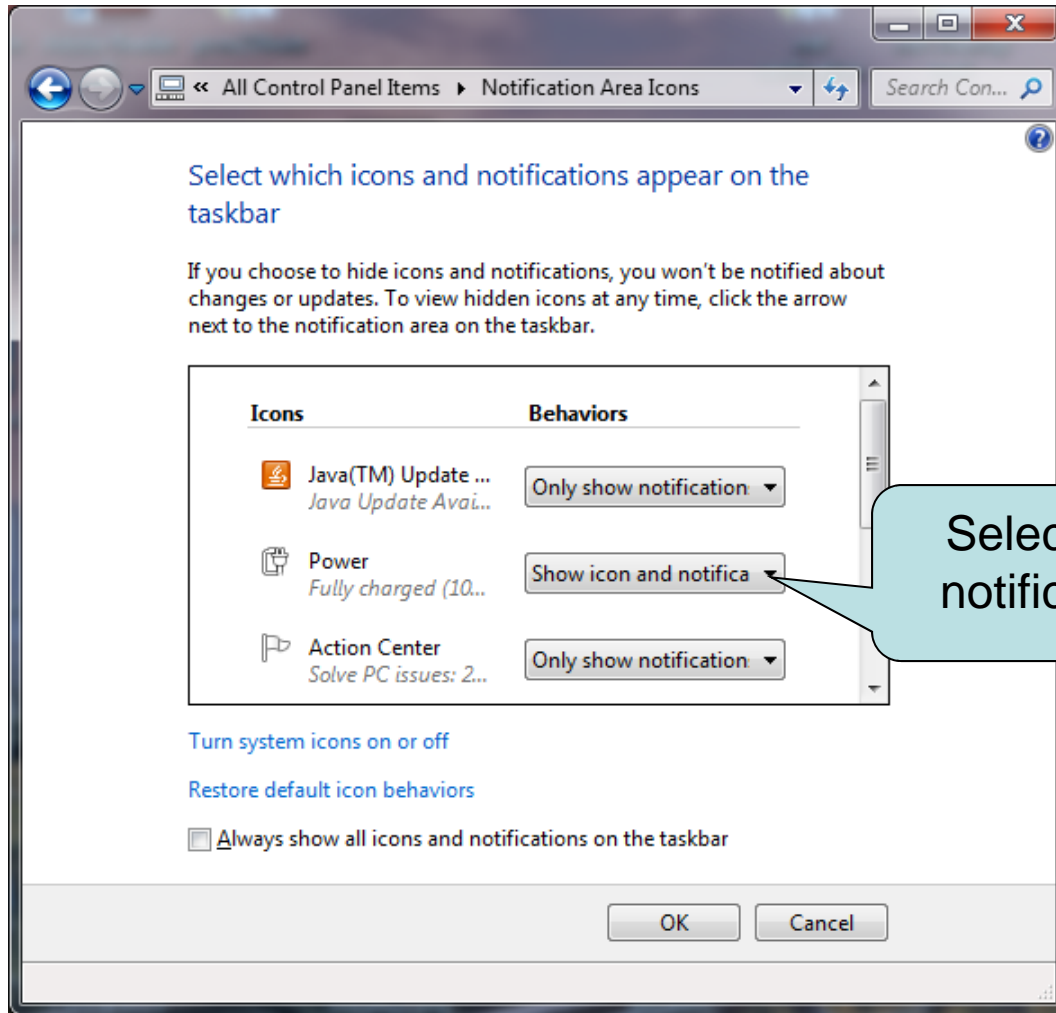
Notice the battery icon has been
Added to the system tray.



If the battery icon is not displayed on Windows Vista in the system tray go to control panel – Taskbar and Start Menu Properties



If the battery icon is not displayed on Windows 7 in the system tray go to
Control Panel – Notification Area Icons



The following links to Microsoft documents should help in configuring these native options:

<http://windowshelp.microsoft.com/Windows/en-US/Help/de24b25d-cd69-4947-b2a0-eb26c1eef0771033.mspx>

<http://windowshelp.microsoft.com/Windows/en-US/Help/1d97f61e-e4f9-4ff2-8a9e-d9e241372c8e1033.mspx>