

Configuring Native USB Power Options in Windows 2000 and XP

Published 07/03/2002 12:32 PM | Updated 09/15/2009 02:50 PM | Answer ID 2497

If you have a battery backup and you don't have the PowerChute Personal Edition software installed then it is a good idea to configure the native Windows USB power option. Configuring the option helps you achieve safe shutdown.

This document provides the necessary steps to configure the Native USB Shutdown Support for Windows 2000 or XP

Step 1:

- Start the PC.
- Connect the USB cable from the battery backup to the PC.

The 'New Hardware Found' popup appears on the systray for about 5 seconds and then disappears.

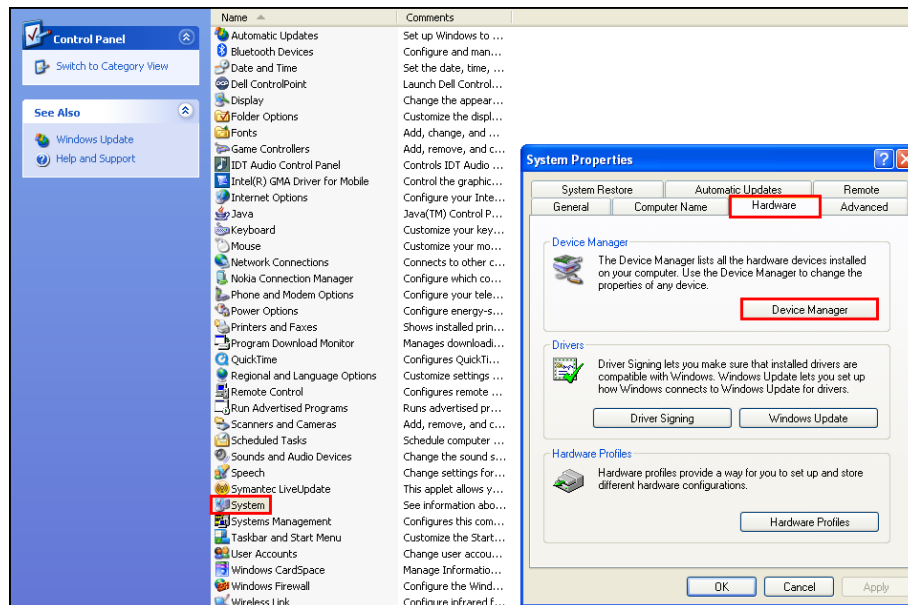
Note: This usually happens only once.

Step 2: The Human Interface Device (HID) drivers are pre-installed with both operating systems, but you can check the installation of the battery backup by going in to Device Manager.

Windows 2000 – Start > Settings > Control Panel> System > Hardware Tab > Device Manager button

Windows XP – Start > Control Panel

- Select the System option.
- Click on the Hardware tab.
- Click on the Device Manager button.



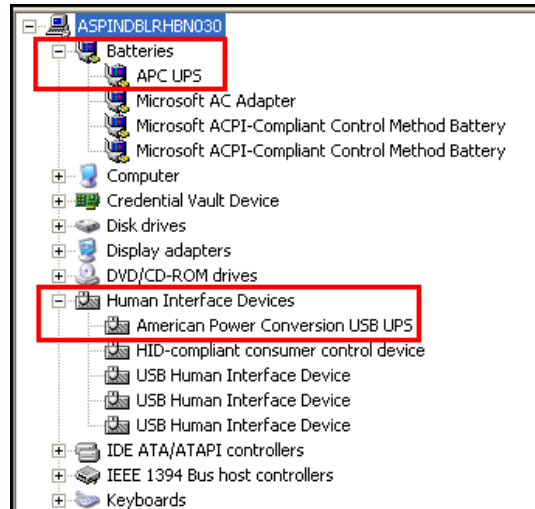
- Click the plus sign next to Batteries, and Human Interface Devices.

Check that Windows Device Manager has these two entries:

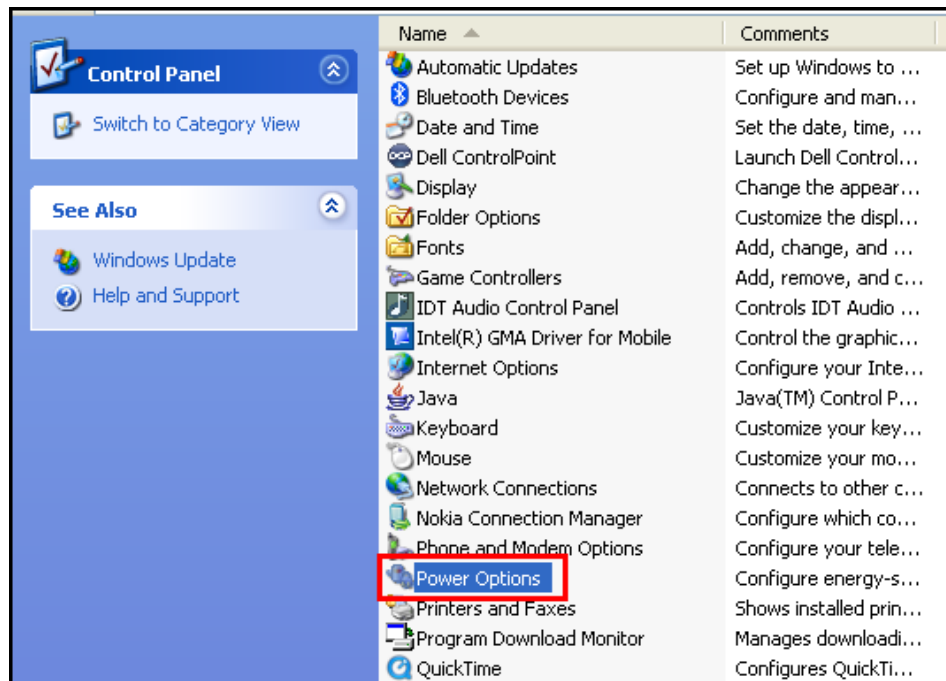
- Batteries> **HID UPS Battery**

*Note: There is a known issue in Windows XP: When PowerChute Personal Edition is uninstalled it does not reset Windows USB power options. (You will not be able to see HID UPS Battery instead you see **APC UPS**).*

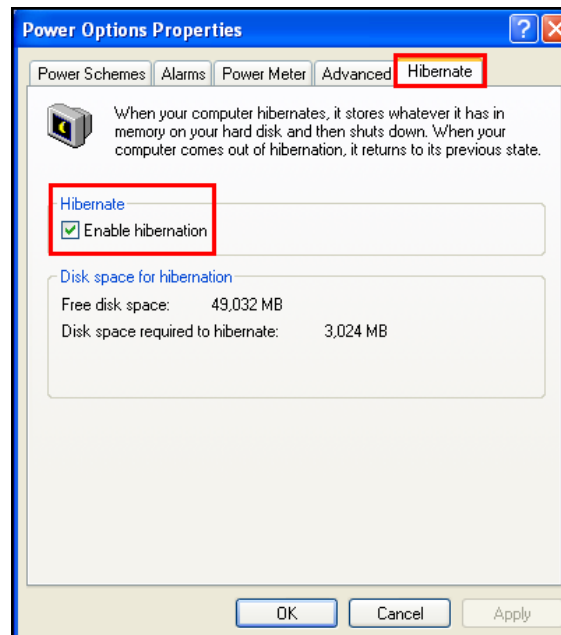
- Human Interface Devices > **American Power Conversion USB UPS**



Step 3: Click on Power Options from the Control Panel.

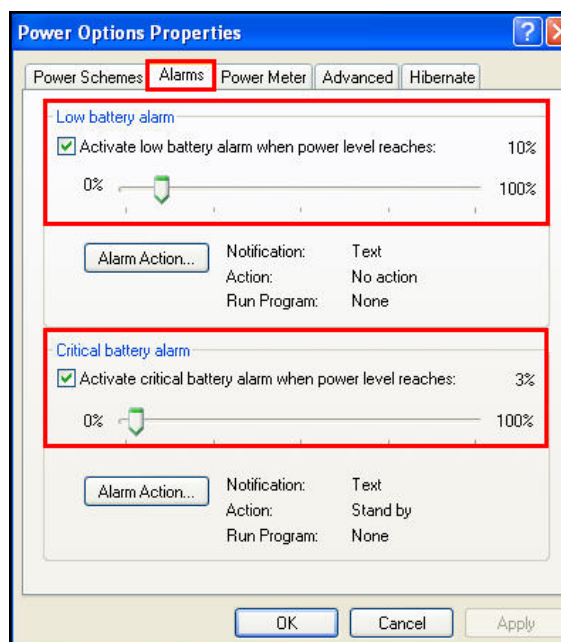


Step 4: Select the Enable Hibernation check box on the Hibernate tab.

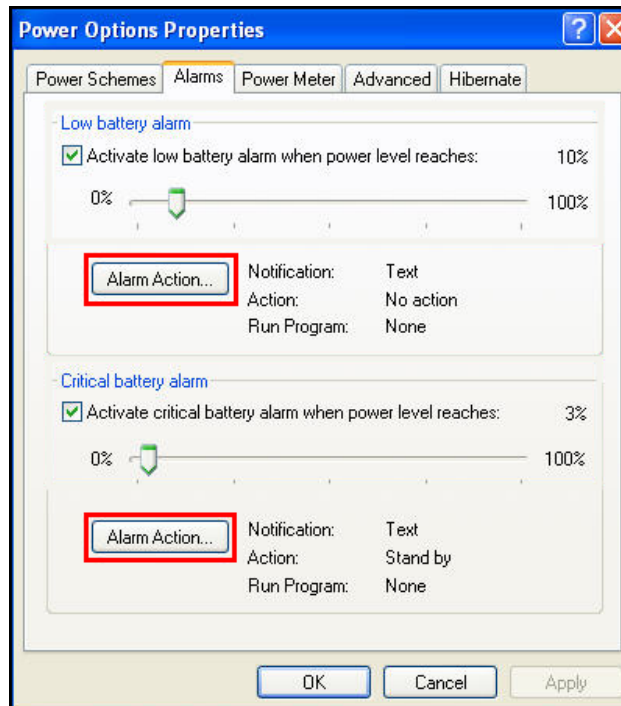


Step 5: The Alarms tab is used to configure how the system will react to a power failure.

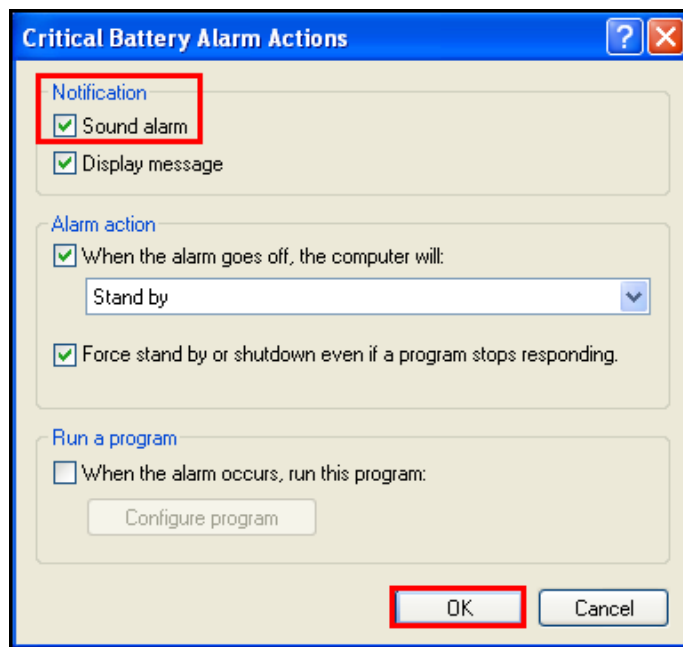
- The **Low battery alarm** section is used to configure how soon a low battery warning will be issued.
- The **Critical battery alarm** section is used to configure how soon a critical battery condition warning will be issued.



Each battery alarm can be configured through its corresponding Alarm Action button.



Pressing the Alarm Action button will bring up a configuration menu that will allow you to configure each alarm to trigger an audible alarm.



When you observe a Low or Critical alarm notification, the Alarm actions can be set as per your convenience to Stand by, Shutdown or Hibernate.