



Main

| | |
|-------------------------------|-----------------------|
| Range of product | Harmony XB4 |
| Product or component type | Head for push-button |
| Device short name | ZB4 |
| Bezel material | Chromium plated metal |
| Mounting diameter | 22 mm |
| Sale per indivisible quantity | 1 |

Complementary

| | |
|-----------------------------------|---|
| CAD overall width | 37 mm |
| CAD overall height | 18.5 mm |
| CAD overall depth | 37 mm |
| Product weight | 0.036 kg |
| Electrical shock protection class | Class I conforming to IEC 61140 |
| Shape of signaling unit head | Round |
| Type of operator | Spring return |
| Operator profile | Flush green type H028 (white) |
| Operator additional information | Horizontal mounting |
| Mechanical durability | 3000000 cycles |
| Vibration resistance | 5 gn (f=2...500 Hz) conforming to IEC 60068-2-6 |
| Shock resistance | 30 gn (duration = 18 ms) for half sine wave acceleration conforming to IEC 60068-2-27 |
| Main group | Harsh environment |
| Group of product | Flush marked type H028 |
| Cap/Operator or lens colour | Green |
| Marking | Type H028 |
| Colour of marking | White |
| Electrical composition code | C15 for 1 contacts using single blocks in front mounting C11 for 3 contacts using single blocks in front mounting C1 for 9 contacts using single blocks in front mounting |

Disclaimer: This documentation is not intended as a substitute for and is not to be used for determining suitability or reliability of these products for specific user applications

Environment

| | |
|---------------------------------------|---|
| Ambient air temperature for storage | -40...85 °C |
| Ambient air temperature for operation | -40...70 °C |
| IP degree of protection | IP69 IP66 conforming to IEC 60529 IP69K |
| NEMA degree of protection | NEMA 12 NEMA 13 NEMA 4 conforming to UL 508 |
| Resistance to high pressure washer | 90 Pa at 82.5 °C |
| IK degree of protection | IK06 conforming to IEC 62262 |
| Standards | IEC 60947-1 UL 508 IEC 60947-5-1 CSA C22.2 |
| Product certifications | UL CSA CE |

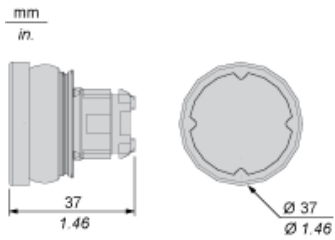
Offer Sustainability

| | |
|----------------------------------|---|
| Sustainable offer status | Green Premium product |
| RoHS (date code: YYWW) | Compliant - since 0627 - Schneider Electric declaration of conformity Schneider Electric declaration of conformity |
| REACH | Reference not containing SVHC above the threshold Reference not containing SVHC above the threshold |
| Product environmental profile | Available Product Environmental Profile |
| Product end of life instructions | Need no specific recycling operations End of Life Information |

Contractual warranty

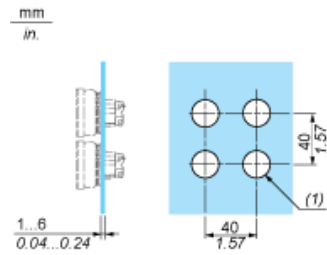
| | |
|-----------------|-----------|
| Warranty period | 18 months |
|-----------------|-----------|

Dimensions



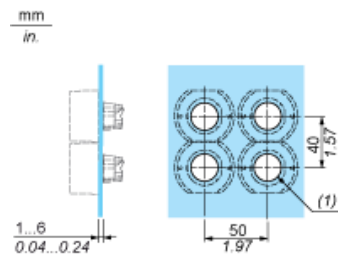
Installation on Flat Surface

Without Protective Guard



(1) $\varnothing 22.5$ mm recommended ($\varnothing 22.3_0^{+0.4}$) / $\varnothing 0.89$ in. recommended ($\varnothing 0.88_0^{+0.016}$)

With Protective Guard



(1) $\varnothing 22.5$ mm recommended ($\varnothing 22.3_0^{+0.4}$) / $\varnothing 0.89$ in. recommended ($\varnothing 0.88_0^{+0.016}$)

Marking Type H028



Electrical Composition Corresponding to Code C1



Electrical Composition Corresponding to Code C2

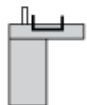


Electrical Composition Corresponding to Codes C9, C11, SF1 and SR1

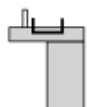


Electrical Composition Corresponding to Code C15

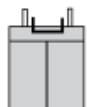
1 N/O



1 N/C



1 N/O + N/C or 1 N/O + N/O or 1 N/C + N/C



Legend

Single contact



Double contact



Light block



Possible location

