

# Product data sheet

Specifications



## Photoelectric sensors XU, XUX, reflex, Sn 14 m, 12...24 VDC, terminals

XUX1APANT16

### Main

Range Of Product	Telemecanique Photoelectric sensors XU
Series Name	General purpose single mode
Electronic Sensor Type	Photo-electric sensor
Sensor Name	XUX
Sensor Design	Compact 92 x 71
Detection System	Reflex
Material	Plastic
Type Of Output Signal	Discrete
Supply Circuit Type	DC
Wiring Technique	3-wire
Discrete Output Type	PNP
Discrete Output Function	1 NO
Electrical Connection	Screw-clamp terminals, 1 x 1.5 mm² or 1 x 0.75 mm² with adaptor
Product Specific Application	-
Emission	Infrared reflex
[Sn] Nominal Sensing Distance	14 m reflex need reflector XUZC50

### Complementary

Enclosure Material	PBT
Lens Material	PMMA
Maximum Sensing Distance	20 m reflex
Output Type	Solid state
Cable Entry	1 entry for M16 x 1.5 cable gland, cable outer diameter: 7...10 mm
Status Led	1 LED (yellow) for output state 1 LED (green) for supply
[Us] Rated Supply Voltage	12...24 V DC
Switching Capacity In Ma	<= 100 mA (overload and short-circuit protection)
Switching Frequency	<= 250 Hz
Maximum Voltage Drop	<1.5 V (closed state)
Current Consumption	<= 35 mA no-load
Maximum Delay First Up	15 ms
Maximum Delay Response	2 ms

Disclaimer: This documentation is not intended as a substitute for and is not to be used for determining suitability or reliability of these products for specific user applications

Maximum Delay Recovery	2 ms
Setting-Up	Sensitivity adjustment
Depth	77 mm
Height	92 mm
Width	31 mm
Net Weight	0.2 kg

## Environment

Product Certifications	UL CSA CE
Ambient Air Temperature For Operation	-25...55 °C
Ambient Air Temperature For Storage	-40...70 °C
Vibration Resistance	7 gn, amplitude = +/- 1.5 mm (f = 10...55 Hz) conforming to IEC 60068-2-6
Shock Resistance	30 gn (duration = 11 ms) conforming to IEC 60068-2-27
Ip Degree Of Protection	IP67 double insulation conforming to IEC 60529 IP65 double insulation conforming to IEC 60529

## Packing Units

Unit Type Of Package 1	PCE
Number Of Units In Package 1	1
Package 1 Height	13.000 cm
Package 1 Width	9.500 cm
Package 1 Length	4.200 cm
Package 1 Weight	187.000 g
Unit Type Of Package 2	S02
Number Of Units In Package 2	22
Package 2 Height	15 cm
Package 2 Width	30 cm
Package 2 Length	40 cm
Package 2 Weight	4.545 kg

## Contractual warranty

Warranty	18 months
----------	-----------

## Sustainability

**Green Premium™ label** is Schneider Electric's commitment to delivering products with best-in-class environmental performance. Green Premium promises compliance with the latest regulations, transparency on environmental impacts, as well as circular and low-CO<sub>2</sub> products.

**Guide to assessing product sustainability** is a white paper that clarifies global eco-label standards and how to interpret environmental declarations.

[Learn more about Green Premium >](#)

[Guide to assess a product's sustainability >](#)



RoHS/REACH

## Well-being performance

✓ Mercury Free

✓ Rohs Exemption Information Yes

## Certifications & Standards

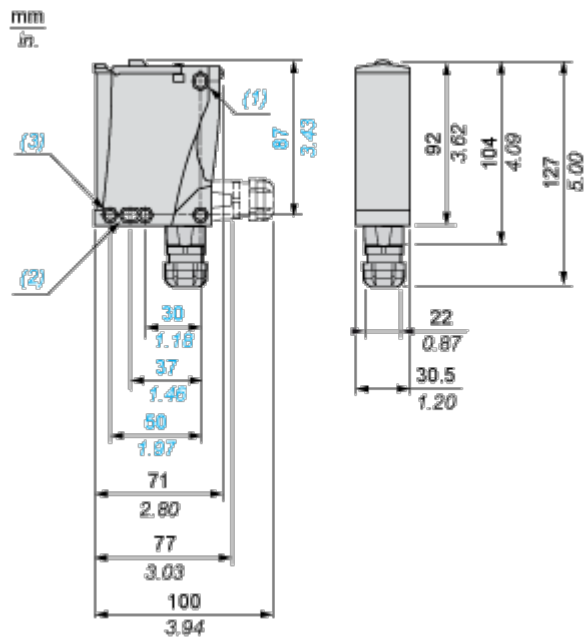
Reach Regulation REACH Declaration

Eu Rohs Directive Pro-active compliance (Product out of EU RoHS legal scope)

California Proposition 65 WARNING: This product can expose you to chemicals including: Diisononyl phthalate (DINP), which is known to the State of California to cause cancer, and Diisodecyl phthalate (DIDP), which is known to the State of California to cause birth defects or other reproductive harm. For more information go to [www.P65Warnings.ca.gov](http://www.P65Warnings.ca.gov)

Dimensions Drawings

Dimensions






- (1) Elongated hole Ø 5.5 x 7
- (2) Elongated hole Ø 5.5 x 9
- (3) Ø 5.5 hole

Connections and Schema

Wiring Schemes

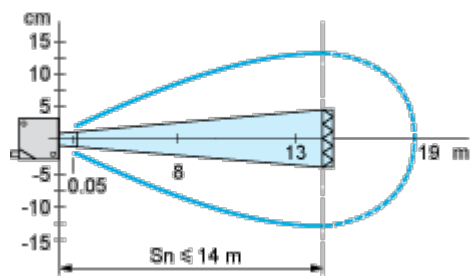
---

PNP/NPN DC

M12	Terminals
1 ● 1	 +
3 ● 2	 -
4 ● 3	 Output

Performance Curves

Detection Curves



With reflector XUZY50