

Product data sheet

Specifications



Photoelectric sensors XU, XUX, emitter, 12...24 VDC, terminals

XUX0AKSAT16T

Main

Range Of Product	Telemecanique Photoelectric sensors XU
Series Name	General purpose multimode
Electronic Sensor Type	Photo-electric sensor transmitter
Sensor Name	XUX
Sensor Design	Compact 92 x 71
Detection System	Thru beam
Material	Plastic
Supply Circuit Type	DC
Wiring Technique	3-wire
Electrical Connection	Screw-clamp terminals, 1 x 1.5 mm² or 1 x 0.75 mm² with adaptor
Product Specific Application	-
Emission	Infrared thru beam
[Sn] Nominal Sensing Distance	40 m thru beam need a receiver

Complementary

Enclosure Material	PBT
Lens Material	PMMA
Maximum Sensing Distance	60 m thru beam
Add On Input	Test by emission breaking
Cable Entry	1 entry for M16 x 1.5 cable gland, cable outer diameter: 7...10 mm
Status Led	1 LED (green) for supply on
[Us] Rated Supply Voltage	12...24 V DC with reverse polarity protection
Supply Voltage Limits	10...36 V DC
Switching Capacity In Ma	<= 100 mA (overload and short-circuit protection)
Switching Frequency	<= 250 Hz
Maximum Voltage Drop	<1.5 V (closed state)
Current Consumption	20 mA no-load
Maximum Delay First Up	200 ms
Maximum Delay Response	2 ms
Maximum Delay Recovery	2 ms
Setting-Up	Without sensitivity adjustment

Disclaimer: This documentation is not intended as a substitute for and is not to be used for determining suitability or reliability of these products for specific user applications

Depth	77 mm
Height	92 mm
Width	31 mm
Net Weight	0.2 kg

Environment

Product Certifications	CSA CE UL
Ambient Air Temperature For Operation	-25...55 °C
Ambient Air Temperature For Storage	-40...70 °C
Vibration Resistance	7 gn, amplitude = +/- 1.5 mm (f = 10...55 Hz) conforming to IEC 60068-2-6
Shock Resistance	30 gn (duration = 11 ms) conforming to IEC 60068-2-27
Ip Degree Of Protection	IP65 double insulation conforming to IEC 60529 IP67 double insulation conforming to IEC 60529

Packing Units

Unit Type Of Package 1	PCE
Number Of Units In Package 1	1
Package 1 Height	4.200 cm
Package 1 Width	9.500 cm
Package 1 Length	13.000 cm
Package 1 Weight	183.000 g
Unit Type Of Package 2	S01
Number Of Units In Package 2	11
Package 2 Height	15 cm
Package 2 Width	15 cm
Package 2 Length	40 cm
Package 2 Weight	2.227 kg

Contractual warranty

Warranty	18 months
----------	-----------

Sustainability

Green Premium™ label is Schneider Electric's commitment to delivering products with best-in-class environmental performance. Green Premium promises compliance with the latest regulations, transparency on environmental impacts, as well as circular and low-CO₂ products.

Guide to assessing product sustainability is a white paper that clarifies global eco-label standards and how to interpret environmental declarations.

[Learn more about Green Premium >](#)

[Guide to assess a product's sustainability >](#)



RoHS/REACH

Well-being performance

✓ Mercury Free

✓ Rohs Exemption Information [Yes](#)

Certifications & Standards

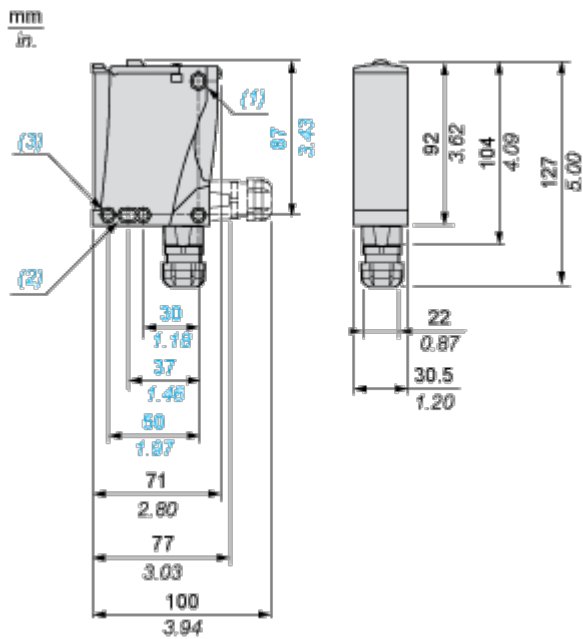
Reach Regulation [REACH Declaration](#)

Eu Rohs Directive Pro-active compliance (Product out of EU RoHS legal scope)

California Proposition 65
WARNING: This product can expose you to chemicals including: Diisononyl phthalate (DINP), which is known to the State of California to cause cancer, and Diisodecyl phthalate (DIDP), which is known to the State of California to cause birth defects or other reproductive harm. For more information go to www.P65Warnings.ca.gov

Dimensions Drawings

Dimensions









- (1) Elongated hole $\varnothing 5.5 \times 7$
- (2) Elongated hole $\varnothing 5.5 \times 9$
- (3) $\varnothing 5.5$ hole

Connections and Schema

Wiring Schemes

Transmitter DC

M12	Terminals
1	 1  +
3	 2  -
2	 3  Beam break input (1)

(1) Input not connected: beam made. Input connected to -: beam broken.

Performance Curves

Detection Curves

