

Product data sheet

Specifications



Inductive proximity sensors XS,
inductive sensor XS8 40x40x70,
PBT, Sn40 mm, 24...240VAC/DC,
1/2"

XS8C2A4MAU20

Main

Range Of Product	Telemecanique Inductive proximity sensors XS
Series Name	General purpose
Sensor Type	Inductive proximity sensor
Device Application	-
Sensor Name	XS8
Sensor Design	Form 40 x 40 x 70
Size	70 mm
Body Type	Fixed
Detector Flush Mounting Acceptance	Non flush mountable
Material	Plastic
Enclosure Material	PBT
Type Of Output Signal	Discrete
Wiring Technique	2-wire
[Sn] Nominal Sensing Distance	40 mm
Discrete Output Function	1 NO
Output Circuit Type	AC/DC
Electrical Connection	Male connector 1/2"20 UNF, 3 pins
[Us] Rated Supply Voltage	24...240 V AC 50/60 Hz 24...240 V DC
Switching Capacity In Ma	5...200 mA DC 5...300 mA AC
Ip Degree Of Protection	IP67 conforming to IEC 60529 IP65 conforming to IEC 60529 IP69K conforming to DIN 40050

Complementary

Detection Face	5 positions turret head
Front Material	PBT
Operating Zone	0...32 mm
Differential Travel	3...15% of Sr
Repeat Accuracy	<= 3% of Sr
Status Led	Supply on: 1 LED (green) Output state: 1 LED (yellow)

Disclaimer: This documentation is not intended as a substitute for and is not to be used for determining suitability or reliability of these products for specific user applications

Supply Voltage Limits	20...264 V AC/DC
Maximum Residual Current	1.5 mA open state 120 V 0.6 mA open state 24 V
Switching Frequency	<= 25 Hz AC <= 50 Hz DC
Maximum Voltage Drop	<5.5 V (closed)
Maximum Delay First Up	7.5 ms
Maximum Delay Response	1.4 ms
Maximum Delay Recovery	2.5 ms
Marking	CE
Height	40 mm
Length	40 mm
Width	70 mm
Net Weight	0.149 kg

Environment

Product Certifications	UL CSA CCC
Ambient Air Temperature For Operation	-25...70 °C
Ambient Air Temperature For Storage	-40...85 °C
Vibration Resistance	25 gn amplitude = +/- 2 mm (f = 10...55 Hz) conforming to IEC 60068-2-6
Shock Resistance	50 gn for 11 ms conforming to EN 60068-2-27

Packing Units

Unit Type Of Package 1	PCE
Number Of Units In Package 1	1
Package 1 Height	4.600 cm
Package 1 Width	4.200 cm
Package 1 Length	8.800 cm
Package 1 Weight	150.000 g
Unit Type Of Package 2	S02
Number Of Units In Package 2	42
Package 2 Height	15.000 cm
Package 2 Width	30.000 cm
Package 2 Length	40.000 cm
Package 2 Weight	6.705 kg

Contractual warranty

Warranty	18 months
----------	-----------

Sustainability

Green Premium™ label is Schneider Electric's commitment to delivering products with best-in-class environmental performance. Green Premium promises compliance with the latest regulations, transparency on environmental impacts, as well as circular and low-CO₂ products.

Guide to assessing product sustainability is a white paper that clarifies global eco-label standards and how to interpret environmental declarations.

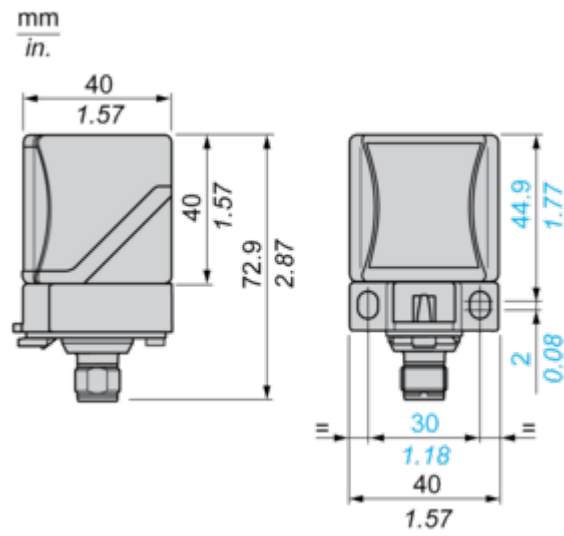
[Learn more about Green Premium >](#)

[Guide to assess a product's sustainability >](#)

Reach Regulation	REACH Declaration
Eu Rohs Directive	Not applicable, out of EU RoHS legal scope
Circularity Profile	No need of specific recycling operations
California Proposition 65	WARNING: This product can expose you to chemicals including: Diisononyl phthalate (DINP), which is known to the State of California to cause cancer, and Diisodecyl phthalate (DIDP), which is known to the State of California to cause birth defects or other reproductive harm. For more information go to www.P65Warnings.ca.gov

Dimensions Drawings

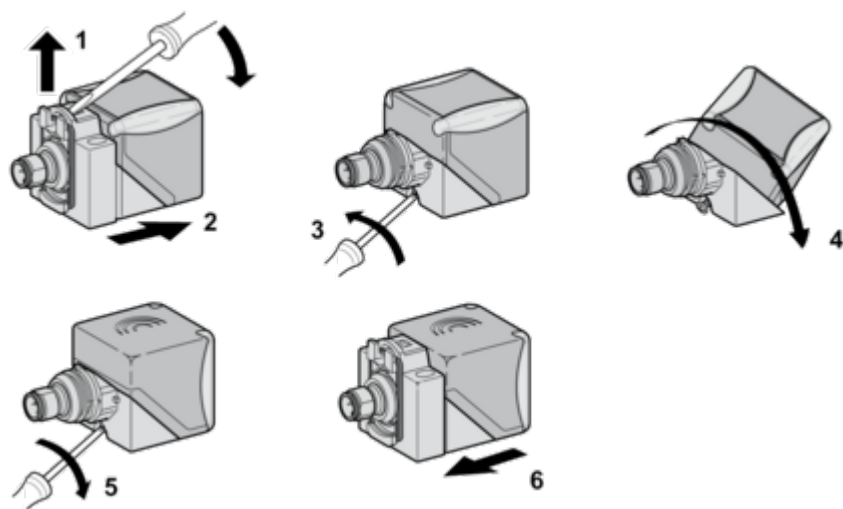
Dimensions



Mounting and Clearance

Mounting

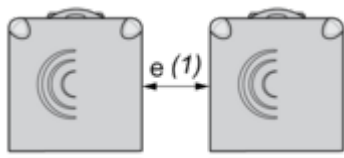
Head Positions



Setting-up Precautions

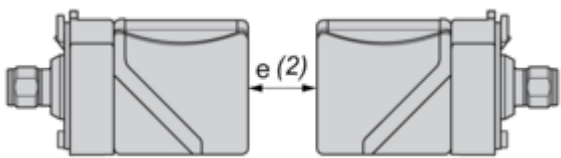
Minimum Mounting Distances (mm)

Side by Side



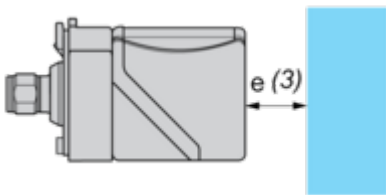
$e (1) \geq 160$

Face to Face



$e (2) \geq 320$

Facing a Metal Object

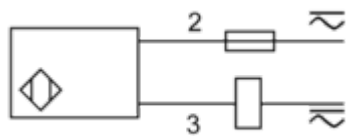


$e (3) \geq 120$

Connections and Schema

Wiring Schemes

2-Wire NO Output



1/2"-20UNF

