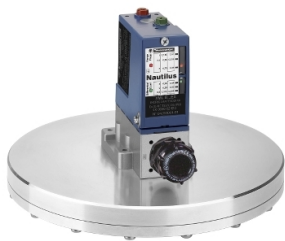


Product data sheet

Specifications



pressure switch XMLB - 50 mbar - adjustable scale 2 thresholds - 1 C/O

XMLBL05R2S12EX

 **Discontinued on:** Dec 8, 2022

 **Discontinued**

Main

Range Of Product	Telemecanique Pressure sensors XM
Pressure Sensor Type	Electromechanical pressure sensor
Product Specific Application	ATEX D
Pressure Sensor Name	XMLB
Electrical Circuit Type	Control circuit
Pressure Switch Type Of Operation	Regulation between 2 thresholds
Scale Type	Adjustable differential
Pressure Rating	0.05 bar
Local Display	With
Fluid Connection Type	G 1/4 (female) conforming to ISO 228
Adjustable Range Of Switching Point On Falling Pressure	0.0012...0.046 bar
Adjustable Range Of Switching Point On Rising Pressure	0.0026...0.05 bar
Possible Differential Maximum At High Setting	0.04 bar
Maximum Permissible Accidental Pressure	112.5 mbar
Destruction Pressure	225 mbar
Pressure Actuator	Diaphragm
Controlled Fluid	Air (0...70 °C) Hydraulic oil (0...70 °C)
Materials In Contact With Fluid	Aluminium Nitrile
Enclosure Material	Zinc alloy

Complementary

Maximum Permissible Pressure - Per Cycle	62.5 mbar
Cable Entry Number	1 tapped entry for M20 x 1.5 cable gland (included)
Terminal Block Type	4 terminals
Repeat Accuracy	2 %
Auxiliary Contacts Operation	Snap action
Contacts Material	Silver contacts
Mechanical Durability	6000000 cycles

Disclaimer: This documentation is not intended as a substitute for and is not to be used for determining suitability or reliability of these products for specific user applications

Setting	External
Terminals Description Iso N°1	(13-14-11-12)OF
Height	145 mm
Depth	204 mm
Width	200 mm

Environment

Standards	EN/IEC 60079-0 EN/IEC 60079-31
Directives	2014/34/EU - ATEX directive
Product Certifications	INERIS 04ATEX0058 IEC-Ex INE 17.0019
Marking	II2 D-Ex tb IIIC T85°C Db IP66
Protective Treatment	TC
Ambient Air Temperature For Operation	-20...60 °C
Operating Position	Any position

Packing Units

Unit Type Of Package 1	PCE
Number Of Units In Package 1	1
Package 1 Height	14.0 cm
Package 1 Width	20.0 cm
Package 1 Length	20.0 cm
Package 1 Weight	3.9 kg

Contractual warranty

Warranty	18 months
----------	-----------

Sustainability

Green Premium™ label is Schneider Electric's commitment to delivering products with best-in-class environmental performance. Green Premium promises compliance with the latest regulations, transparency on environmental impacts, as well as circular and low-CO₂ products.

Guide to assessing product sustainability is a white paper that clarifies global eco-label standards and how to interpret environmental declarations.

[Learn more about Green Premium >](#)

[Guide to assess a product's sustainability >](#)



RoHS/REACH

Well-being performance

✓ Mercury Free

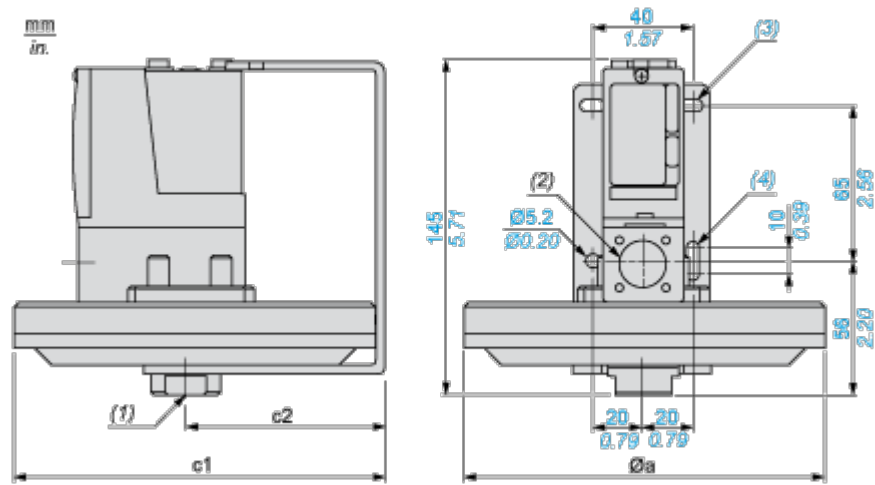
✓ Rohs Exemption Information [Yes](#)

Certifications & Standards

Reach Regulation	REACH Declaration
Eu Rohs Directive	Pro-active compliance (Product out of EU RoHS legal scope)
Circularity Profile	No need of specific recycling operations
California Proposition 65	WARNING: This product can expose you to chemicals including: Diisononyl phthalate (DINP), which is known to the State of California to cause cancer, and Diisodecyl phthalate (DIDP), which is known to the State of California to cause birth defects or other reproductive harm. For more information go to www.P65Warnings.ca.gov

Dimensions Drawings

Dimensions

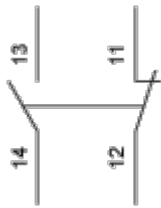


- Ø a = 200
- c1 = 204
- c2 = 104
- (1) 1 fluid entry, tapped G1/4 (BSP female)
- (2) 1 electrical connections entry, tapped M20 x 1.5
- (3) 2 elongated holes Ø 10.2 x 5.2
- (4) 1 elongated hole Ø 15.2 x 5.2

Connections and Schema

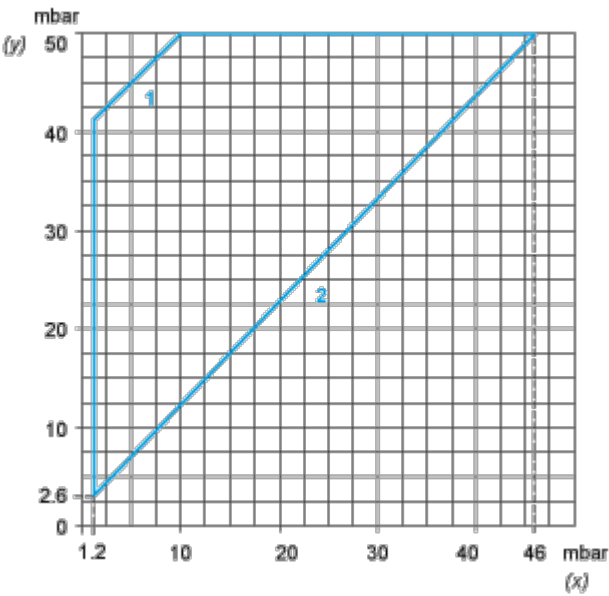
Wiring Diagram

Terminal Model

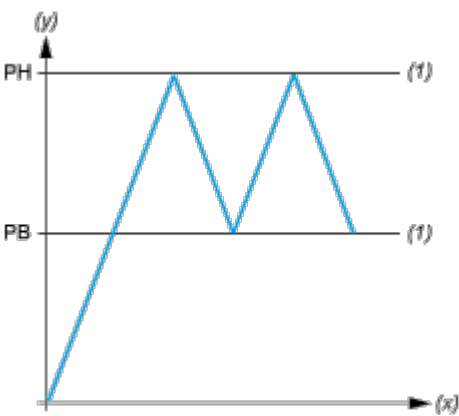


Performance Curves

Operating Curves



- (y) Rising pressure
- (x) Falling pressure
- 1 : Maximum differential
- 2 : Minimum differential



- (y) Pressure
- (x) Time
- (1) Adjustable value
- PH : High point
- PB : Below point