

Product data sheet

Specifications



Limit switch, Limit switches XC Standard, XCKJ, roller lever, 2NC + NO, ATEX/IECEX

XCKJ390541H29EX

Main

| | |
|-------------------------------|---|
| Range Of Product | Telemecanique Limit switches XC Standard |
| Series Name | Standard format |
| Product Or Component Type | Limit switch |
| Device Short Name | XCKJ |
| Body Type | Fixed |
| Head Type | Rotary head |
| Material | Metal |
| Fixing Mode | By the body |
| Movement Of Operating Head | Rotary |
| Type Of Operator | Spring return roller lever thermoplastic variable length |
| Switch Actuation | By 30° cam |
| Type Of Approach | Lateral approach, 1 or 2 programmable direction |
| Electrical Connection | Screw-clamp terminals, clamping capacity: 1 x 0.34...2 x 0.75 mm ² |
| Cable Entry Number | 1 tapped entry for M20 x 1.5 cable gland (included) 9...12 mm |
| Number Of Poles | 3 |
| Contacts Type And Composition | 2 NC + 1 NO |
| Contacts Insulation Form | Zb |
| Contact Operation | Snap action |
| Number Of Steps | 1 |
| Positive Opening | Without |
| Minimum Torque For Tripping | 0.25 N.m |
| Maximum Actuation Speed | 1.5 m/s |
| Ip Degree Of Protection | IP66 conforming to IEC 60529 |

Complementary

| | |
|---------------------------------|--|
| Body Material | Zamak |
| Head Material | Zamak |
| Positive Opening Minimum Torque | 0.5 N.m |
| Minimum Actuation Speed | 0.01 m/min |
| Contact Code Designation | B300, AC-15 (Ue = 240 V), Ie = 1.5 A conforming to IEC 60947-5-1 B300, AC-15 (Ue = 240 V), Ie = 1.5 A conforming to IEC 60947-5-1 appendix A R300, DC-13 (Ue = 250 V), Ie = 0.1 A conforming to IEC 60947-5-1 R300, DC-13 (Ue = 250 V), Ie = 0.1 A conforming to IEC 60947-5-1 appendix A |

Disclaimer: This documentation is not intended as a substitute for and is not to be used for determining suitability or reliability of these products for specific user applications

| | |
|--|--|
| [Ithe] Conventional Enclosed Thermal Current | 6 A AC |
| [Uij] Rated Insulation Voltage | 300 V conforming to UL 508 400 V (pollution degree 3) conforming to IEC 60947-1 300 V conforming to CSA C22.2 No 14 |
| Maximum Resistance Across Terminals | 25 MOhm conforming to IEC 60255-7 category 3 |
| [Uimp] Rated Impulse Withstand Voltage | 4 kV conforming to IEC 60664 4 kV conforming to IEC 60947-1 |
| Short-Circuit Protection | 6 A cartridge fuse, type gG |
| Electrical Durability | 5000000 cycles, DC-13, inductive load type, 120 V, 4 W, operating rate <3600 cyc/mn, load factor: 0.5, DC conforming to IEC 60947-5-1 appendix C 5000000 cycles, DC-13, inductive load type, 24 V, 3 W, operating rate <3600 cyc/mn, load factor: 0.5, DC conforming to IEC 60947-5-1 appendix C 5000000 cycles, DC-13, inductive load type, 48 V, 2 W, operating rate <3600 cyc/mn, load factor: 0.5, DC conforming to IEC 60947-5-1 appendix C |
| Mechanical Durability | 20000000 cycles |
| Marking | II2 D-Ex tb IIIC T85°C Db IP66/67 |
| Width | 40 mm |
| Height | 77 mm |
| Depth | 44 mm |

Environment

| | |
|---------------------------------------|--|
| Shock Resistance | 50 gn for 11 ms conforming to IEC 60068-2-27 |
| Vibration Resistance | 25 gn (f= 10...500 Hz) conforming to IEC 60068-2-6 |
| Electrical Shock Protection Class | Class I conforming to IEC 61140 Class I conforming to NF C 20-030 |
| Ambient Air Temperature For Operation | -20...60 °C |
| Protective Treatment | TC |
| Dust Zone | Zone 21 - 22 |
| Product Certifications | INERIS 04ATEX0014X IEC-Ex INE 17.0020X |
| Standards | IEC 60079-31 IEC 60079-0 |
| Directives | 2014/34/EU - ATEX directive |

Packing Units

| | |
|------------------------------|-----------|
| Unit Type Of Package 1 | PCE |
| Number Of Units In Package 1 | 1 |
| Package 1 Height | 9.000 cm |
| Package 1 Width | 9.500 cm |
| Package 1 Length | 15.500 cm |
| Package 1 Weight | 542.000 g |
| Unit Type Of Package 2 | S03 |
| Number Of Units In Package 2 | 12 |
| Package 2 Height | 30.000 cm |
| Package 2 Width | 30.000 cm |
| Package 2 Length | 40.000 cm |

| | |
|------------------|----------|
| Package 2 Weight | 6.917 kg |
|------------------|----------|

Contractual warranty

| | |
|----------|-----------|
| Warranty | 18 months |
|----------|-----------|

Sustainability

Green Premium™ label is Schneider Electric's commitment to delivering products with best-in-class environmental performance. Green Premium promises compliance with the latest regulations, transparency on environmental impacts, as well as circular and low-CO₂ products.

Guide to assessing product sustainability is a white paper that clarifies global eco-label standards and how to interpret environmental declarations.

[Learn more about Green Premium >](#)

[Guide to assess a product's sustainability >](#)



RoHS/REACH

Well-being performance

✓ Mercury Free

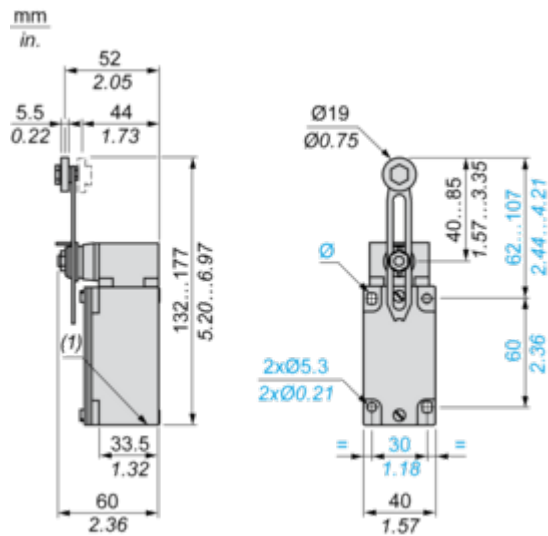
✓ Rohs Exemption Information [Yes](#)

Certifications & Standards

| | |
|---------------------------|--|
| Reach Regulation | REACH Declaration |
| Eu Rohs Directive | Pro-active compliance (Product out of EU RoHS legal scope) |
| Circularity Profile | No need of specific recycling operations |
| California Proposition 65 | WARNING: This product can expose you to chemicals including: Diisononyl phthalate (DINP), which is known to the State of California to cause cancer, and Diisodecyl phthalate (DIDP), which is known to the State of California to cause birth defects or other reproductive harm. For more information go to www.P65Warnings.ca.gov |

Dimensions Drawings

Dimensions

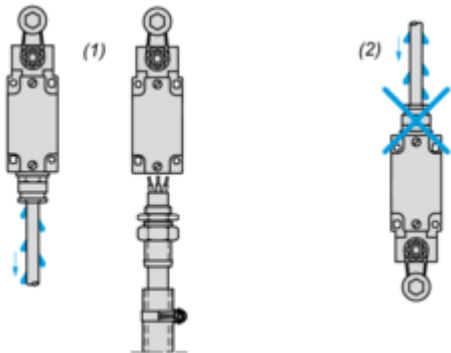


(1) 1 tapped entry M20 x 1.5

Mounting and Clearance

Mounting with Cable Entry

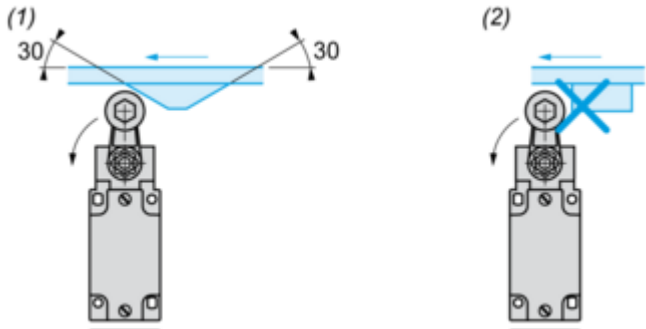
Position of Cable Gland



- (1) Recommended
- (2) To be avoided

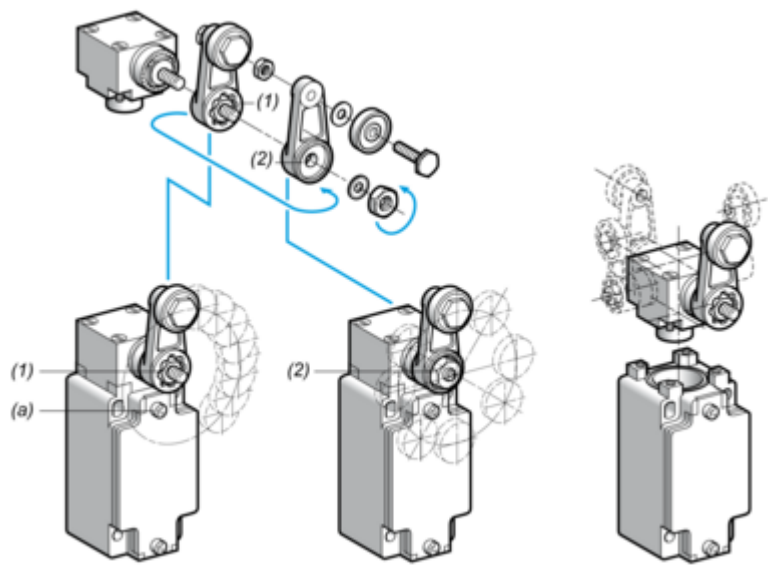
Mounting with Rotary Heads and Levers

Type of Cam



- (1) Recommended
- (2) To be avoided

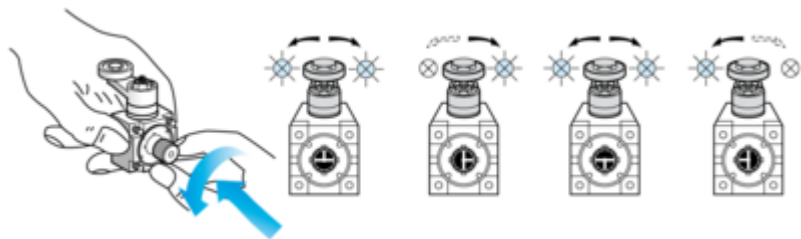
Setting-up with Lever Head



- (1) 5° steps throughout 360° / Tightening torque (Min : 1) (Max : 1.5)
- (2) 45° steps throughout 360° / Tightening torque (Min : 1) (Max : 1.5)
- (a) Tightening torque (Min : 1) (Max : 1.5)

Setting-up with Head ZCKE05

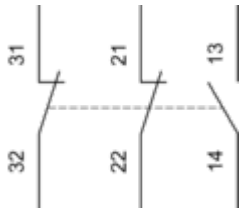
Direction of Actuation Programming



Connections and Schema

Wiring Diagram

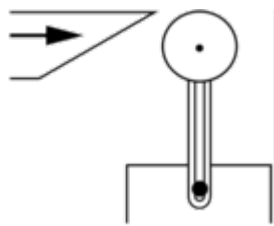
3-pole NC + NC + NO Snap Action



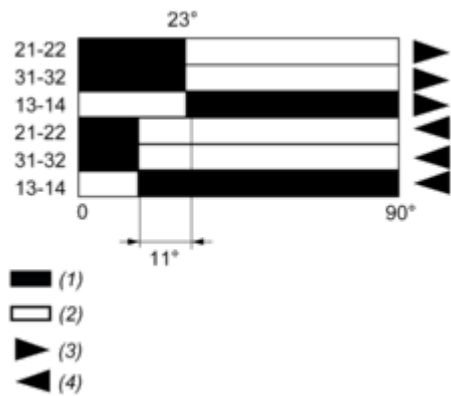
Technical Description

Characteristics of Actuation

Switch Actuation by 30° Cam



Functionnal Diagram



- (1) Closed
- (2) Open
- (3) Tripping
- (4) Resetting