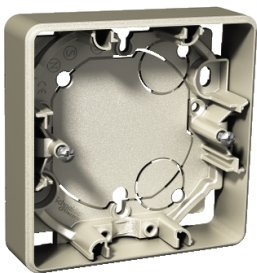


Product data sheet

Specifications



Exxact surface mounted box 1-gang low (21mm) metallic

WDE004711

 **Discontinued on:** Jun 30, 2023

 **Discontinued**

Main

Range	Exxact
Product Or Component Type	Mounting box

Complementary

Device Mounting	Surface
Number Of Gangs	1 gang
Colour	Metallic
Material	ABS (acrylonitrile butadiene-styrene)
Quantity Per Set	Set of 10
Height	85 mm
Width	85 mm
Projecting Depth	21 mm

Environment

Standards	IEC 60884-1 EN 60670-1
Product Certifications	CE SEMKO FIMKO NEMKO
Ip Degree Of Protection	IP21

Packing Units

Unit Type Of Package 1	PCE
Number Of Units In Package 1	1
Package 1 Height	3.7 cm
Package 1 Width	10.0 cm
Package 1 Length	10.3 cm
Package 1 Weight	38.0 g
Unit Type Of Package 2	BB1
Number Of Units In Package 2	10
Package 2 Height	10.8 cm
Package 2 Width	10.4 cm

Disclaimer: This documentation is not intended as a substitute for and is not to be used for determining suitability or reliability of these products for specific user applications

Package 2 Length	26.4 cm
Package 2 Weight	426.0 g
Unit Type Of Package 3	PAL
Number Of Units In Package 3	2880
Package 3 Height	114.9 cm
Package 3 Width	80.0 cm
Package 3 Length	120.0 cm
Package 3 Weight	153.909 kg

Contractual warranty

Warranty	18 months
----------	-----------

Sustainability

Green Premium™ label is Schneider Electric's commitment to delivering products with best-in-class environmental performance. Green Premium promises compliance with the latest regulations, transparency on environmental impacts, as well as circular and low-CO₂ products.

Guide to assessing product sustainability is a white paper that clarifies global eco-label standards and how to interpret environmental declarations.

[Learn more about Green Premium >](#)

[Guide to assess a product's sustainability >](#)



Transparency RoHS/REACH

Well-being performance

✓ Reach Free Of Svhc

✓ Toxic Heavy Metal Free

✓ Mercury Free

✓ Rohs Exemption Information Yes

Certifications & Standards

Reach Regulation	REACH Declaration
Eu Rohs Directive	Compliant EU RoHS Declaration
China Rohs Regulation	China RoHS declaration Pro-active China RoHS declaration (out of China RoHS legal scope)
Environmental Disclosure	Product Environmental Profile
Circularity Profile	No need of specific recycling operations