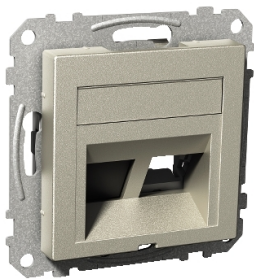


Product data sheet

Specifications



Central plate, Exxact LexCom, metallic

WDE004436

⚠ Discontinued on: Jun 30, 2023

⚠ Discontinued

Main

Range Of Product	Exxact
Product Or Component Type	Central plate
Quantity Per Set	Set of 1

Complementary

Device Mounting	Flush
Device Presentation	Cover plate with fixing frame
Product Destination	RJ45 connector
Installation Direction	Inclined
Socket Number	2
Type Of Footprint	S-One DPM Keystone
Fixing Mode	Snap-in
Colour	Metallic
Material	ABS (acrylonitrile butadiene-styrene)
Embedding Depth	20 mm
Height	55 mm
Width	55 mm
Projecting Depth	11.8 mm

Packing Units

Unit Type Of Package 1	PCE
Number Of Units In Package 1	1
Package 1 Height	5.6 cm
Package 1 Width	7.8 cm
Package 1 Length	8.2 cm
Package 1 Weight	58 g
Unit Type Of Package 2	BB1
Number Of Units In Package 2	12
Package 2 Height	11.8 cm
Package 2 Width	17 cm

Disclaimer: This documentation is not intended as a substitute for and is not to be used for determining suitability or reliability of these products for specific user applications

Package 2 Length	25.2 cm
Package 2 Weight	784 g
Unit Type Of Package 3	P12
Number Of Units In Package 3	2880
Package 3 Height	111 cm
Package 3 Width	80 cm
Package 3 Length	120 cm
Package 3 Weight	206.96 kg

Contractual warranty

Warranty	18 months
----------	-----------

Sustainability

Green Premium™ label is Schneider Electric's commitment to delivering products with best-in-class environmental performance. Green Premium promises compliance with the latest regulations, transparency on environmental impacts, as well as circular and low-CO₂ products.

Guide to assessing product sustainability is a white paper that clarifies global eco-label standards and how to interpret environmental declarations.

[Learn more about Green Premium >](#)

[Guide to assess a product's sustainability >](#)



Transparency RoHS/REACH

Well-being performance

✓ Reach Free Of Svhc

✓ Rohs Exemption Information [Yes](#)

Certifications & Standards

Reach Regulation	REACH Declaration
Eu Rohs Directive	Compliant with Exemptions
China Rohs Regulation	China RoHS declaration Product out of China RoHS scope. Substance declaration for your information
Environmental Disclosure	Product Environmental Profile
Weee	The product must be disposed on European Union markets following specific waste collection and never end up in rubbish bins
Circularity Profile	No need of specific recycling operations