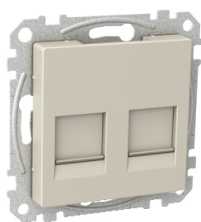


Product data sheet

Specifications



Central plate, Exxact, for 2x Keystone with dust lids, metallic

WDE004378

⚠ Discontinued on: Jun 30, 2023

⚠ Discontinued

Main

Range Of Product	Exxact
Product Or Component Type	Central plate
Quantity Per Set	Set of 1

Complementary

Device Mounting	Flush Surface
Device Presentation	Cover plate with fixing frame
Product Destination	RJ45 connector
Installation Direction	Straight
Socket Number	2
Size	14.7 x 20.4 mm
Type Of Footprint	Keystone
Fixing Mode	Snap-in
Colour	Metallic
Material	ABS (acrylonitrile butadiene-styrene)
Embedding Depth	14 mm
Height	55 mm
Width	55 mm
Projecting Depth	10 mm

Packing Units

Unit Type Of Package 1	PCE
Number Of Units In Package 1	1
Package 1 Height	4.4 cm
Package 1 Width	7.0 cm
Package 1 Length	8.0 cm
Package 1 Weight	46.0 g
Unit Type Of Package 2	BB1
Number Of Units In Package 2	10
Package 2 Height	8.4 cm

Disclaimer: This documentation is not intended as a substitute for and is not to be used for determining suitability or reliability of these products for specific user applications

Package 2 Width	16.2 cm
Package 2 Length	27.0 cm
Package 2 Weight	530.0 g

Contractual warranty

Warranty	18 months
----------	-----------

Sustainability




Green Premium™ label is Schneider Electric’s commitment to delivering products with best-in-class environmental performance. Green Premium promises compliance with the latest regulations, transparency on environmental impacts, as well as circular and low-CO₂ products.

Guide to assessing product sustainability is a white paper that clarifies global eco-label standards and how to interpret environmental declarations.

[Learn more about Green Premium >](#)

[Guide to assess a product’s sustainability >](#)

Well-being performance

	Toxic Heavy Metal Free	
	Mercury Free	
	Rohs Exemption Information	Yes
Reach Regulation	REACH Declaration	
Eu Rohs Directive	Compliant	EU RoHS Declaration
China Rohs Regulation	China RoHS declaration Pro-active China RoHS declaration (out of China RoHS legal scope)	