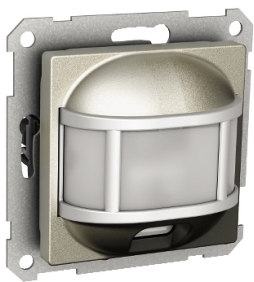


Product data sheet

Specifications



Exxact Movement detector multi 2300W 180° metallic

WDE004368

 **Discontinued on:** Mar 29, 2021

 **Discontinued**

Main

Range	Exxact
Product Or Component Type	Movement detector
Device Presentation	Mechanism with fixing frame
Quantity Per Set	Set of 1

Complementary

Version	Multi version
Rated Power In W	2300 W
Device Mounting	Flush
Power Range	1200 W for parallel connected fluorescent lamp 2 1150 VA for low voltage halogen lamp with electronic transformer 500 W for compact fluorescent lamp 200 VA for motor (single-phase) 2300 W for incandescent lamp 2000 W for 230 V AC halogen lamp 1200 W for uncompensated fluorescent lamp 2000 VA for parallel compensated fluorescent lamp 140 µF cos phi = 0.9 900 W for HF coil fluorescent lamp 1050 VA for low voltage halogen lamp with iron core transformer
Detection Angle	180°
Light Sensitivity	0...1000 lux
Time Delay	1 s...20 min
Colour	Metallic
Connections - Terminals	Screwless terminals
Clamping Connection Capacity	1 x 1.5...2 x 2.5 mm² for solid cable(s) 1 x 1.5...2 x 2.5 mm² for solid stranded cable(s)
Material	ABS (acrylonitrile butadiene-styrene)
Wiring Configuration	With neutral
Mounting Height	1...1.5 m
Embedding Depth	16 mm
Height	71 mm
Width	71 mm
Projecting Depth	27 mm

Environment

Disclaimer: This documentation is not intended as a substitute for and is not to be used for determining suitability or reliability of these products for specific user applications

Standards	EN 60669-2-1 EN 61000-6
Product Certifications	FIMKO NEMKO CE SEMKO
Ip Degree Of Protection	IP20

Packing Units

Unit Type Of Package 1	PCE
Number Of Units In Package 1	1
Package 1 Height	6.2 cm
Package 1 Width	7.6 cm
Package 1 Length	7.6 cm
Package 1 Weight	142 g

Contractual warranty

Warranty	18 months
----------	-----------

Sustainability

Green Premium™ label is Schneider Electric's commitment to delivering products with best-in-class environmental performance. Green Premium promises compliance with the latest regulations, transparency on environmental impacts, as well as circular and low-CO₂ products.

Guide to assessing product sustainability is a white paper that clarifies global eco-label standards and how to interpret environmental declarations.

[Learn more about Green Premium >](#)

[Guide to assess a product's sustainability >](#)



Transparency RoHS/REACH

Well-being performance

✓ Reach Free Of Svhc

✓ Toxic Heavy Metal Free

✓ Mercury Free

✓ Rohs Exemption Information Yes

Certifications & Standards

Reach Regulation	REACH Declaration
Eu Rohs Directive	Compliant EU RoHS Declaration
China Rohs Regulation	China RoHS declaration Pro-active China RoHS declaration (out of China RoHS legal scope)
Environmental Disclosure	Product Environmental Profile
Weee	The product must be disposed on European Union markets following specific waste collection and never end up in rubbish bins
Circularity Profile	No need of specific recycling operations