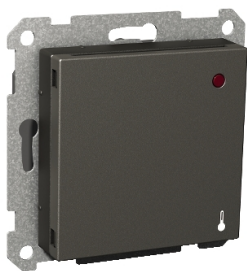


# Product data sheet

Specifications



## Thermost, Exxact, floor heating 2-pole, anthracite

WDE003881

### Main

Range	Exxact
Product Or Component Type	Thermostat

### Complementary

Device Presentation	Mechanism with fixing frame
Device Application	Floor
Technology Type	Electronic
Product Specific Application	Heating
Colour	Anthracite (RAL 7021)
Quantity Per Set	Set of 1
[Ue] Rated Operational Voltage	230 V AC 50 Hz
[In] Rated Current	10 A (resistive load)
Control Type	Electronic controller
Switch Function	2-pole
Local Signalling	LED (red) for heating application LED (green) for operating
Connections - Terminals	Screw terminals
Clamping Connection Capacity	1 x 1.5...2 x 2.5 mm <sup>2</sup> for solid cable(s) 1 x 1.5...2 x 2.5 mm <sup>2</sup> for solid stranded cable(s)
Temperature Setting Range	5...50 °C floor mode
Material	ABS (acrylonitrile butadiene-styrene)
Device Mounting	Flush
Fixing Mode	By screws
Height	71 mm
Width	71 mm
Embedding Depth	25 mm
Projecting Depth	17 mm

### Environment

Ip Degree Of Protection	IP20
Ik Degree Of Protection	IK02
Standards	EN 60669-1

Disclaimer: This documentation is not intended as a substitute for and is not to be used for determining suitability or reliability of these products for specific user applications

Product Certifications	FIMKO SEMKO CE NEMKO
------------------------	-------------------------------

## Packing Units

Unit Type Of Package 1	PCE
Number Of Units In Package 1	1
Package 1 Height	8.000 cm
Package 1 Width	9.200 cm
Package 1 Length	10.000 cm
Package 1 Weight	188.000 g

## Contractual warranty

Warranty	18 months
----------	-----------

## Sustainability

**Green Premium™ label** is Schneider Electric's commitment to delivering products with best-in-class environmental performance. Green Premium promises compliance with the latest regulations, transparency on environmental impacts, as well as circular and low-CO<sub>2</sub> products.

**Guide to assessing product sustainability** is a white paper that clarifies global eco-label standards and how to interpret environmental declarations.

[Learn more about Green Premium >](#)

[Guide to assess a product's sustainability >](#)



Transparency   RoHS/REACH

## Well-being performance

✓ Reach Free Of Svhc

✓ Toxic Heavy Metal Free

✓ Mercury Free

✓ Rohs Exemption Information   Yes

## Certifications & Standards

Reach Regulation	<a href="#">REACH Declaration</a>
Eu Rohs Directive	Compliant <a href="#">EU RoHS Declaration</a>
China Rohs Regulation	<a href="#">China RoHS declaration</a> Pro-active China RoHS declaration (out of China RoHS legal scope)
Environmental Disclosure	<a href="#">Product Environmental Profile</a>
Weee	The product must be disposed on European Union markets following specific waste collection and never end up in rubbish bins
Circularity Profile	No need of specific recycling operations