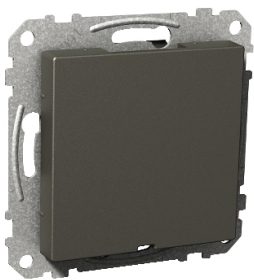


Product data sheet

Specifications



Blind cover, Exxact, snap-in fixation, anthracite

WDE003725

Main

Range	Exxact
Product Or Component Type	Blind cover
Device Presentation	Cover plate with fixing frame
Quantity Per Set	Set of 5

Complementary

Wiring Device Mounting	Flush
Fixing Mode	Screw
Colour Tint	Anthracite
Material	ABS (acrylonitrile butadiene-styrene)
Embedding Depth	10 mm
Height	71 mm
Width	71 mm
Projecting Depth	11.8 mm
Product Compatibility	To be completed with Exxact frame

Environment

Standards	EN 60670-1
Product Certifications	CE FIMKO NEMKO SEMKO
Ip Degree Of Protection	IP20 also with visual parts removed

Packing Units

Unit Type Of Package 1	PCE
Number Of Units In Package 1	1
Package 1 Height	2.500 cm
Package 1 Width	7.000 cm
Package 1 Length	7.000 cm
Package 1 Weight	34.000 g
Unit Type Of Package 2	BB1
Number Of Units In Package 2	5

Disclaimer: This documentation is not intended as a substitute for and is not to be used for determining suitability or reliability of these products for specific user applications

Package 2 Height	7.800 cm
Package 2 Width	17.100 cm
Package 2 Length	8.100 cm
Package 2 Weight	186.000 g
Unit Type Of Package 3	CAR
Number Of Units In Package 3	60
Package 3 Height	17.600 cm
Package 3 Width	35.200 cm
Package 3 Length	25.000 cm
Package 3 Weight	2.488 kg

Contractual warranty

Warranty	18 months
----------	-----------

Sustainability

Green Premium™ label is Schneider Electric's commitment to delivering products with best-in-class environmental performance. Green Premium promises compliance with the latest regulations, transparency on environmental impacts, as well as circular and low-CO₂ products.

Guide to assessing product sustainability is a white paper that clarifies global eco-label standards and how to interpret environmental declarations.

[Learn more about Green Premium >](#)

[Guide to assess a product's sustainability >](#)



RoHS/REACH

Well-being performance

✓ Mercury Free

✓ Rohs Exemption Information [Yes](#)

Certifications & Standards

Reach Regulation	REACH Declaration
Eu Rohs Directive	Compliant with Exemptions
China Rohs Regulation	China RoHS declaration Product out of China RoHS scope. Substance declaration for your information