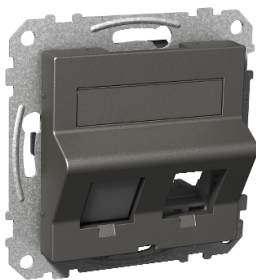



Product data sheet

Specifications



Exxact Keystone central plate inclined anthracite

WDE003423

 **Discontinued on:** Sep 9, 2021

 **Discontinued**

Main

Range Of Product	Exxact
Product Or Component Type	Central plate
Quantity Per Set	Set of 1

Complementary

Device Mounting	Flush
Device Presentation	Cover plate with fixing frame
Product Destination	RJ45 connector
Installation Direction	Inclined
Socket Number	2
Type Of Footprint	Keystone
Fixing Mode	Snap-in
Colour	Anthracite (RAL 9003)
Material	ABS (acrylonitrile butadiene-styrene)
Embedding Depth	14 mm
Height	55 mm
Width	55 mm
Projecting Depth	21 mm

Packing Units

Unit Type Of Package 1	PCE
Number Of Units In Package 1	1
Package 1 Height	4.5 cm
Package 1 Width	7.1 cm
Package 1 Length	7.1 cm
Package 1 Weight	44 g

Disclaimer: This documentation is not intended as a substitute for and is not to be used for determining suitability or reliability of these products for specific user applications

Sustainability

Green Premium™ label is Schneider Electric’s commitment to delivering products with best-in-class environmental performance. Green Premium promises compliance with the latest regulations, transparency on environmental impacts, as well as circular and low-CO₂ products.

Guide to assessing product sustainability is a white paper that clarifies global eco-label standards and how to interpret environmental declarations.

[Learn more about Green Premium >](#)

[Guide to assess a product’s sustainability >](#)



Transparency RoHS/REACH

Well-being performance

✓ Mercury Free

✓ Rohs Exemption Information [Yes](#)

Certifications & Standards

Reach Regulation	REACH Declaration
Eu Rohs Directive	Compliant with Exemptions
China Rohs Regulation	China RoHS declaration Product out of China RoHS scope. Substance declaration for your information
Environmental Disclosure	Product Environmental Profile
Weee	The product must be disposed on European Union markets following specific waste collection and never end up in rubbish bins
Circularity Profile	No need of specific recycling operations