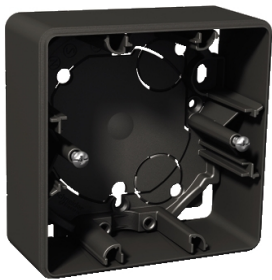


Product data sheet

Specifications



Exxact surface mounted box 1-gang high (35mm) anthracite

WDE003361

Main

Range	Exxact
Product Or Component Type	Mounting box

Complementary

Device Mounting	Surface
Number Of Gangs	1 gang
Colour	Anthracite (RAL 7021)
Material	ABS (acrylonitrile butadiene-styrene)
Quantity Per Set	Set of 10
Height	85 mm
Width	85 mm
Projecting Depth	35 mm

Environment

Standards	IEC 60884-1 EN 60670-1
Product Certifications	NEMKO SEMKO FIMKO CE
Ip Degree Of Protection	IP21

Packing Units

Unit Type Of Package 1	PCE
Number Of Units In Package 1	1
Package 1 Height	5.100 cm
Package 1 Width	12.500 cm
Package 1 Length	11.300 cm
Package 1 Weight	52.000 g
Unit Type Of Package 2	BB1
Number Of Units In Package 2	10
Package 2 Height	11.000 cm
Package 2 Width	25.900 cm
Package 2 Length	18.500 cm

Disclaimer: This documentation is not intended as a substitute for and is not to be used for determining suitability or reliability of these products for specific user applications

Package 2 Weight	658.000 g
------------------	-----------

Contractual warranty

Warranty	18 months
----------	-----------

Sustainability

Green Premium™ label is Schneider Electric's commitment to delivering products with best-in-class environmental performance. Green Premium promises compliance with the latest regulations, transparency on environmental impacts, as well as circular and low-CO₂ products.

Guide to assessing product sustainability is a white paper that clarifies global eco-label standards and how to interpret environmental declarations.

[Learn more about Green Premium >](#)

[Guide to assess a product's sustainability >](#)



Sustainable Packaging Transparency RoHS/REACH

Resource performance

✓ Sustainable Packaging

Well-being performance

✓ Reach Free Of Svhc

✓ Toxic Heavy Metal Free

✓ Mercury Free

✓ Rohs Exemption Information [Yes](#)

Certifications & Standards

Reach Regulation	REACH Declaration
Eu Rohs Directive	Compliant EU RoHS Declaration
China Rohs Regulation	China RoHS declaration Pro-active China RoHS declaration (out of China RoHS legal scope)
Environmental Disclosure	Product Environmental Profile
Circularity Profile	No need of specific recycling operations