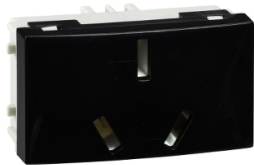


Product data sheet

Specifications



SO - IRAM 2071- Argentinean - 10A - 250V - Black

WDA104042

Main

Range	Base
Product Or Component Type	Socket-outlet
Outlet Standard	Argentinean
Outlet Poles Configuration	2P + E
Device Presentation	Mechanism
Cover Plate Colour Tint	Black

Complementary

Device Mounting	Flush
Number Of Modules	1 module
Rated Current	10 A at 250 V AC 50/60 Hz
Fixing Mode	Clip-in
Material	ABS + PC: socket-outlet
Connections - Terminals	Screw clamp terminals
Width	45 mm
Height	25 mm
Depth	32 mm

Packing Units

Unit Type Of Package 1	PCE
Number Of Units In Package 1	1
Package 1 Weight	0.015 kg

Disclaimer: This documentation is not intended as a substitute for and is not to be used for determining suitability or reliability of these products for specific user applications

Sustainability

Green Premium™ label is Schneider Electric’s commitment to delivering products with best-in-class environmental performance. Green Premium promises compliance with the latest regulations, transparency on environmental impacts, as well as circular and low-CO₂ products.

Guide to assessing product sustainability is a white paper that clarifies global eco-label standards and how to interpret environmental declarations.

[Learn more about Green Premium >](#)

[Guide to assess a product’s sustainability >](#)



Transparency RoHS/REACH

Well-being performance

✓ Reach Free Of Svhc

✓ Rohs Exemption Information [Yes](#)

Certifications & Standards

Reach Regulation	REACH Declaration
Eu Rohs Directive	Compliant EU RoHS Declaration
China Rohs Regulation	China RoHS declaration Pro-active China RoHS declaration (out of China RoHS legal scope)
Environmental Disclosure	Product Environmental Profile
Circularity Profile	No need of specific recycling operations