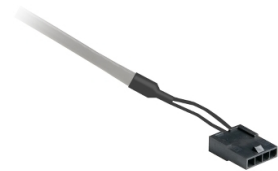


# Product data sheet

Specifications

## LXM28 STO connection cable 2m

VW3M1C20R20



### Main

Range Of Product	Lexium 28
Product Or Component Type	Safe torque off cable
Accessory / Separate Part Type	Preassembled STO cordset
Accessory / Separate Part Category	Connection accessory
Product Compatibility	Servo drive LXM28
Accessory / Separate Part Destination	Between servo drive and logic controller
Range Compatibility	Lexium 28
Cable Length	2 m

### Complementary

Electrical Connection	Connector - Molex 4-pin for servo drive side Free end for CN9 interface
Net Weight	0.2 kg

### Packing Units

Unit Type Of Package 1	PCE
Number Of Units In Package 1	1
Package 1 Height	1.000 cm
Package 1 Width	28.500 cm
Package 1 Length	29.000 cm
Package 1 Weight	123.000 g
Unit Type Of Package 2	S02
Number Of Units In Package 2	15
Package 2 Height	15.000 cm
Package 2 Width	30.000 cm
Package 2 Length	40.000 cm
Package 2 Weight	2.155 kg

Disclaimer: This documentation is not intended as a substitute for and is not to be used for determining suitability or reliability of these products for specific user applications

# Sustainability






**Green Premium™ label** is Schneider Electric’s commitment to delivering products with best-in-class environmental performance. Green Premium promises compliance with the latest regulations, transparency on environmental impacts, as well as circular and low-CO<sub>2</sub> products.

**Guide to assessing product sustainability** is a white paper that clarifies global eco-label standards and how to interpret environmental declarations.

[Learn more about Green Premium >](#)

[Guide to assess a product’s sustainability >](#)

## Well-being performance

 Reach Free Of Svhc	
 Toxic Heavy Metal Free	
 Mercury Free	
 Rohs Exemption Information	<a href="#">Yes</a>
 Pvc Free	
Reach Regulation	<a href="#">REACH Declaration</a>
Eu Rohs Directive	Pro-active compliance (Product out of EU RoHS legal scope) <a href="#">EU RoHS Declaration</a>
China Rohs Regulation	<a href="#">China RoHS declaration</a> Pro-active China RoHS declaration (out of China RoHS legal scope)
California Proposition 65	WARNING: This product can expose you to chemicals including: Lead and lead compounds, which is known to the State of California to cause cancer and birth defects or other reproductive harm. For more information go to <a href="#">www.P65Warnings.ca.gov</a>