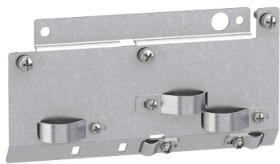


Product data sheet

Specifications



EMC conformity kits, Altivar Machine ATV320, Altivar 12, for variable speed drive size 5

VW3A9533

Main

Range Of Product	Altivar Machine ATV320
Accessory / Separate Part Type	EMC conformity kits
Accessory / Separate Part Category	Mounting and fixing accessory
Product Compatibility	ATV320...C variable speed drive 11 kW motor, 200...240 V three phase ATV320...C variable speed drive 15 kW motor, 200...240 V three phase ATV320...C variable speed drive 11 kW motor, 525...600 V three phase ATV320...C variable speed drive 15 kW motor, 525...600 V three phase

Complementary

Kit Composition	fixing collars EMC plate screws
Net Weight	0.26 kg

Packing Units

Unit Type Of Package 1	PCE
Number Of Units In Package 1	1
Package 1 Height	7.000 cm
Package 1 Width	16.700 cm
Package 1 Length	23.000 cm
Package 1 Weight	395.000 g
Unit Type Of Package 2	S03
Number Of Units In Package 2	7
Package 2 Height	30.000 cm
Package 2 Width	30.000 cm
Package 2 Length	40.000 cm
Package 2 Weight	3.410 kg

Disclaimer: This documentation is not intended as a substitute for and is not to be used for determining suitability or reliability of these products for specific user applications

Sustainability

Green Premium™ label is Schneider Electric’s commitment to delivering products with best-in-class environmental performance. Green Premium promises compliance with the latest regulations, transparency on environmental impacts, as well as circular and low-CO₂ products.

Guide to assessing product sustainability is a white paper that clarifies global eco-label standards and how to interpret environmental declarations.

[Learn more about Green Premium >](#)

[Guide to assess a product’s sustainability >](#)

Well-being performance

 Reach Free Of Svhc

Reach Regulation

[REACH Declaration](#)

Eu Rohs Directive

Pro-active compliance (Product out of EU RoHS legal scope)

China Rohs Regulation

[China RoHS declaration](#)

California Proposition 65

WARNING: This product can expose you to chemicals including: Lead and lead compounds, which is known to the State of California to cause cancer and birth defects or other reproductive harm. For more information go to www.P65Warnings.ca.gov