

Product data sheet

Specifications



output dv dt filter, Altivar, for variable speed drive, 1.5 to 5.5kW, 15A, IP20

VW3A5302

Main

Product Or Component Type	Dv/dt filter
Range Compatibility	Altivar Process ATV900 Easy Altivar 610 Altivar Process ATV600 Altivar Machine ATV340
Product Specific Application	Output filter
[In] Rated Current	15 A
Product Compatibility	ATV630 variable speed drive wall mount - 3 kW, 380...480 V ATV630 variable speed drive wall mount - 4 kW, 380...480 V ATV630 variable speed drive wall mount - 5.5 kW, 380...480 V ATV630 variable speed drive wall mount - 1.5 kW, 200...240 V ATV630 variable speed drive wall mount - 2.2 kW, 200...240 V ATV630 variable speed drive wall mount - 3 kW, 200...240 V ATV650 variable speed drive wall mount - 3 kW, 380...480 V ATV650 variable speed drive wall mount - 4 kW, 380...480 V ATV650 variable speed drive wall mount - 5.5 kW, 380...480 V ATV610 variable speed drive - 3 kW, 380...415 V ATV610 variable speed drive - 4 kW, 380...415 V ATV610 variable speed drive - 5.5 kW, 380...415 V ATV930 variable speed drive wall mount - 3 kW, 380...480 V ATV930 variable speed drive wall mount - 4 kW, 380...480 V ATV930 variable speed drive wall mount - 5.5 kW, 380...480 V ATV930 variable speed drive wall mount - 1.5 kW, 200...240 V ATV930 variable speed drive wall mount - 2.2 kW, 200...240 V ATV930 variable speed drive wall mount - 3 kW, 200...240 V ATV950 variable speed drive wall mount - 3 kW, 380...480 V ATV950 variable speed drive wall mount - 4 kW, 380...480 V ATV950 variable speed drive wall mount - 5.5 kW, 380...480 V
Nedded Quantity	1
Electrical Connection	Terminal block, connection capacity: 6 mm² / AWG 10

Complementary

Maximum Motor Cable Length	300 m unshielded cable 300 m shielded cable
Dv/Dt	3000 V/µs max at 200...240 V 3000 V/µs max at 380...480 V
Thermal Losses	38 W at 4 kHz
Maximum Drive Output Frequency	100 Hz
Ambient Air Temperature For Operation	-10...50 °C (without current derating) 50...60 °C (with current derating 1.5 % per °C)
Operating Altitude	0...1000 m without current derating 1000...4000 m with current derating 1 % per 100 m
Width	295 mm
Height	535 mm

Disclaimer: This documentation is not intended as a substitute for and is not to be used for determining suitability or reliability of these products for specific user applications

Depth	215 mm
Net Weight	12 kg

Environment

Ip Degree Of Protection	IP20 IP21 (with kit VW3A53902)
Ambient Air Temperature For Storage	-40...70 °C

Packing Units

Unit Type Of Package 1	PCE
Number Of Units In Package 1	1
Package 1 Height	39.0 cm
Package 1 Width	59.0 cm
Package 1 Length	36.6 cm
Package 1 Weight	18.8 kg

Sustainability





Green Premium™ label is Schneider Electric's commitment to delivering products with best-in-class environmental performance. Green Premium promises compliance with the latest regulations, transparency on environmental impacts, as well as circular and low-CO₂ products.

Guide to assessing product sustainability is a white paper that clarifies global eco-label standards and how to interpret environmental declarations.

[Learn more about Green Premium >](#)

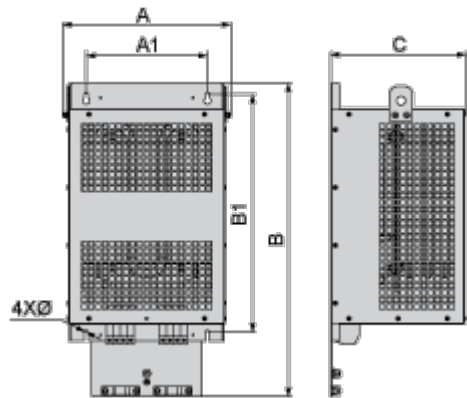
[Guide to assess a product's sustainability >](#)

Well-being performance

 Reach Free Of Svhc	
 Toxic Heavy Metal Free	
 Mercury Free	
 Rohs Exemption Information	Yes
Reach Regulation	REACH Declaration
Eu Rohs Directive	Pro-active compliance (Product out of EU RoHS legal scope) EU RoHS Declaration
China Rohs Regulation	China RoHS declaration
California Proposition 65	WARNING: This product can expose you to chemicals including: Lead and lead compounds, which is known to the State of California to cause cancer and birth defects or other reproductive harm. For more information go to www.P65Warnings.ca.gov

Dimensions Drawings

Dimensions



Dimensions in mm

A	B	C	A1	B1	Ø
285	520	215	210	411	7

Dimensions in in.

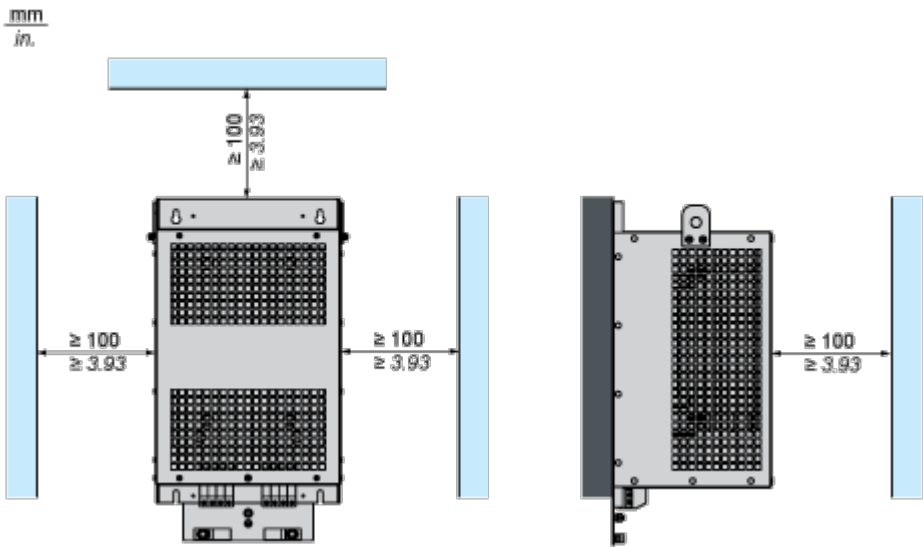
A	B	C	A1	B1	Ø
11.2	20.5	8.5	8.3	16.2	0.28

Mounting and Clearance

Mounting and Clearance

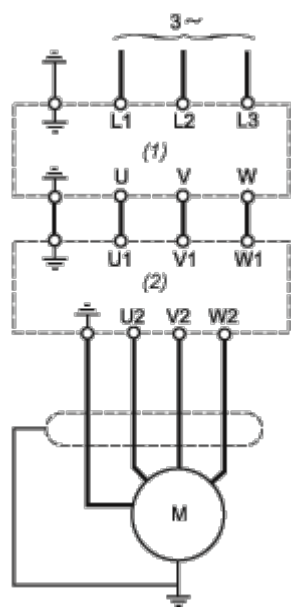


(1) Filter



Connections and Schema

Recommended Schema



- (1) Drive
- (2) Filter