

Product data sheet

Specifications



EMC radio interference input filter, for variable speed drive, 100A

VW3A4706

Main

Range Of Product	Altivar
Product Or Component Type	EMC input filter
Range Compatibility	Altivar Machine ATV340 Altivar Process ATV600 Altivar Process ATV900
Product Compatibility	Variable speed drive ATV630 wall mount, motor: 37 kW, 380...480 V Variable speed drive ATV630 wall mount, motor: 45 kW, 380...480 V Variable speed drive ATV630 wall mount, motor: 18.5 kW, 200...240 V Variable speed drive ATV630 wall mount, motor: 22 kW, 200...240 V Variable speed drive ATV650 wall mount, motor: 37 kW, 380...480 V Variable speed drive ATV650 wall mount, motor: 45 kW, 380...480 V Variable speed drive ATV930 wall mount, motor: 37 kW, 380...480 V Variable speed drive ATV930 wall mount, motor: 45 kW, 380...480 V Variable speed drive ATV930 wall mount, motor: 18.5 kW, 200...240 V Variable speed drive ATV930 wall mount, motor: 22 kW, 200...240 V Variable speed drive ATV950 wall mount, motor: 37 kW, 380...480 V Variable speed drive ATV950 wall mount, motor: 45 kW, 380...480 V Variable speed drive ATV340 motor: 30 kW, 380...480 V Variable speed drive ATV340 motor: 37 kW, 380...480 V
Product Specific Application	Radio interference input filter
Mounting Location	At variable speed drive side
[In] Rated Current	100 A
Thermal Losses	12.4 W
Network Number Of Phases	Three phase

Complementary

Electrical Connection	Terminal 50 mm² AWG 1/0
Maximum Motor Cable Length	150 m shielded motor cable 4 kHz conforming to IEC 61800-3 category C2, 380...480 V 300 m shielded motor cable 4 kHz conforming to IEC 61800-3 category C3, 380...480 V 150 m shielded motor cable 4 kHz conforming to IEC 61800-3 category C2, 200...240 V 300 m shielded motor cable 4 kHz conforming to IEC 61800-3 category C3, 200...240 V 50 m shielded motor cable 4 kHz conforming to IEC 61800-3 category C1, 200...240 V 50 m shielded motor cable 4 kHz conforming to IEC 61800-3 category C1, 380...480 V
Maximum Earth Leakage Current	13.9 mA at 400 V 50 Hz TN 13.9 mA at 400 V 50 Hz TT
Power Supply Voltage	380...480 V 200...240 V
Tolerance	10 %

Disclaimer: This documentation is not intended as a substitute for and is not to be used for determining suitability or reliability of these products for specific user applications

Mechanical Robustness	Shocks class 3M4 conforming to IEC 60721-3-3 Vibrations class 3M4 conforming to IEC 60721-3-3
Width	120 mm
Height	340 mm
Depth	180 mm
Net Weight	6.5 kg

Environment

Ip Degree Of Protection	IP20mounting side by side IP21with kit VW3A47906
Relative Humidity	5...95 % without condensation conforming to IEC 61800-5-1
Ambient Air Temperature For Operation	-10...50 °C (without current derating) 50...60 °C (with current derating 1.5 % per °C)
Ambient Air Temperature For Storage	-40...70 °C
Operating Altitude	0...1000 m without current derating 1000...4000 m with current derating 1 % per 100 m
Standards	IEC 61800-3

Packing Units

Unit Type Of Package 1	PCE
Number Of Units In Package 1	1
Package 1 Height	28.500 cm
Package 1 Width	37.500 cm
Package 1 Length	53.000 cm
Package 1 Weight	11.179 kg
Unit Type Of Package 2	P06
Number Of Units In Package 2	4
Package 2 Height	75.000 cm
Package 2 Width	60.000 cm
Package 2 Length	80.000 cm
Package 2 Weight	58.248 kg

Sustainability

Green Premium™ label is Schneider Electric's commitment to delivering products with best-in-class environmental performance. Green Premium promises compliance with the latest regulations, transparency on environmental impacts, as well as circular and low-CO₂ products.

Guide to assessing product sustainability is a white paper that clarifies global eco-label standards and how to interpret environmental declarations.

[Learn more about Green Premium >](#)

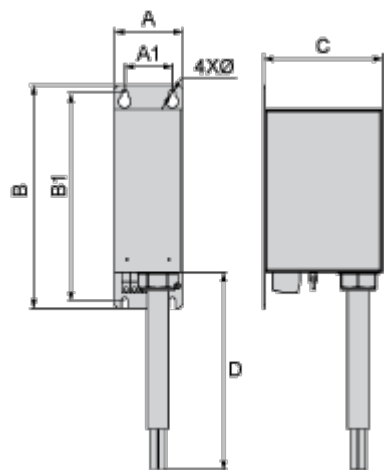
[Guide to assess a product's sustainability >](#)

Well-being performance

✓	Reach Free Of Svhc	
✓	Toxic Heavy Metal Free	
✓	Mercury Free	
✓	Rohs Exemption Information	Yes
Reach Regulation		REACH Declaration
Eu Rohs Directive		Pro-active compliance (Product out of EU RoHS legal scope) EU RoHS Declaration
China Rohs Regulation		China RoHS declaration
California Proposition 65		WARNING: This product can expose you to chemicals including: Lead and lead compounds, which is known to the State of California to cause cancer and birth defects or other reproductive harm. For more information go to www.P65Warnings.ca.gov

Dimensions Drawings

Dimensions



Dimensions in mm

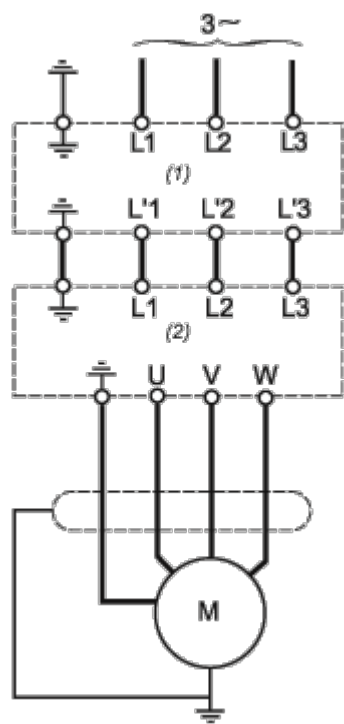
A	B	C	D	A1	B1	Ø
120	340	180	1300	80	322	7

Dimensions in in.

A	B	C	D	A1	B1	Ø
4.7	13.4	7.1	51.2	3.1	12.7	0.28

Connections and Schema

Recommended Schema



- (1) Filter
- (2) Drive