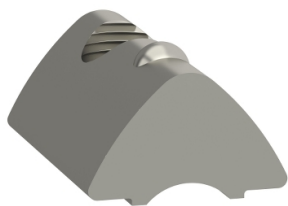


Product data sheet

Specifications



slot nuts, slot size 6, M6 - 10 pieces

VW33MF010T6N6

Main

Range Of Product	Lexium linear motion
Product Or Component Type	T-slot nut
Product Specific Application	To mount the axis on fixed support
Accessory / Separate Part Category	Maintenance accessories
Screw Type	M6

Complementary

Product Compatibility	PAS 43 linear axis, outer dimension : 80 x 80 mm CAS 43 linear axis, outer dimension : 80 x 80 mm
Range Compatibility	Lexium CAS Lexium PAS
Width	6 mm

Packing Units

Unit Type Of Package 1	PCE
Number Of Units In Package 1	1
Package 1 Height	6.6 cm
Package 1 Width	19.0 cm
Package 1 Length	13.0 cm
Package 1 Weight	122.0 g
Unit Type Of Package 2	S04
Number Of Units In Package 2	36
Package 2 Height	30.0 cm
Package 2 Width	40.0 cm
Package 2 Length	60.0 cm
Package 2 Weight	5.314 kg

Contractual warranty

Warranty	18 months
----------	-----------

Disclaimer: This documentation is not intended as a substitute for and is not to be used for determining suitability or reliability of these products for specific user applications

Sustainability

Green Premium™ label is Schneider Electric’s commitment to delivering products with best-in-class environmental performance. Green Premium promises compliance with the latest regulations, transparency on environmental impacts, as well as circular and low-CO₂ products.

Guide to assessing product sustainability is a white paper that clarifies global eco-label standards and how to interpret environmental declarations.

[Learn more about Green Premium >](#)

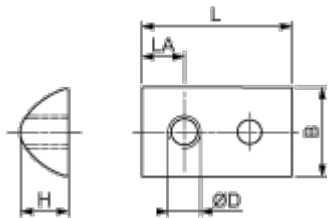
[Guide to assess a product’s sustainability >](#)

Well-being performance

✓	Reach Free Of Svhc	
✓	Toxic Heavy Metal Free	
✓	Mercury Free	
✓	Rohs Exemption Information	Yes
✓	Pvc Free	
Reach Regulation	REACH Declaration	
Eu Rohs Directive	Pro-active compliance (Product out of EU RoHS legal scope) EU RoHS Declaration	
China Rohs Regulation	China RoHS declaration	
California Proposition 65	WARNING: This product can expose you to chemicals including: Lead and lead compounds, which is known to the State of California to cause cancer and birth defects or other reproductive harm. For more information go to www.P65Warnings.ca.gov	

Dimensions Drawings

Dimensions



Dimensions in mm

B	H	L	LA	ØD
10.6	6.4	17	5.5	M6

Dimensions in in.

B	H	L	LA	ØD
0.42	0.25	0.67	0.22	M6