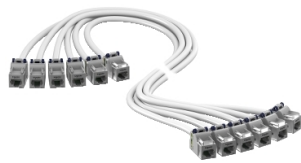


# Product data sheet

Specifications



## Pre Term Copper CL-MLinks STP Female-Female S-One ISO Class Ea PL2

VEDITCA03A

⚠ Discontinued on: Jun 30, 2023

⚠ Discontinued

### Main

Range	Actassi
Product Name	Actassi CL-MLinks
Product	Pre-terminated link with female-female connectors
Colour	White
Cable Shielding Type	S/FTP
Aggregation Types (Customisable Value In Configurator)	Rapstrap polyurethane elastomer black

### Complementary

Type Of Cable	Pre-terminated conforming to ISO 11801: PL2 class Ea
Number Of Links (Customizable Value In Configurator)	6 1 4 12 3 2
Maximum Resistance Unbalance	3 %
Length (Customizable Value In Configurator)	7...60 m
Calorific Value	365 MJ/km
Communication Network Category	6 <sub>A</sub>
Supported Applications	PoE 15W (Power over Ethernet) 10GBASE-T PoE+ 30W (Power over Ethernet Plus) VoIP (Voice IP)
Nvp	78 %
Connector A	S-One
Connector B	S-One
Type Of Fanout	Straight
Awg Gauge	AWG 26
Type Of Cable	S/FTP AWG 26
Pulling Force	55 N
Input Impedance	100 Ohm at 1...500 MHz
Delay Skew	44 ns at 1...500 MHz

Disclaimer: This documentation is not intended as a substitute for and is not to be used for determining suitability or reliability of these products for specific user applications

<b>Attenuation</b>	Guaranteed: 4 dB @ 1 MHz Guaranteed: 4 dB @ 4 MHz Guaranteed: 5.46 dB @ 10 MHz Guaranteed: 6.9 dB @ 16 MHz Guaranteed: 7.72 dB @ 20 MHz Guaranteed: 9.67 dB @ 31.25 MHz Guaranteed: 13.8 dB @ 62.5 MHz Guaranteed: 17.62 dB @ 100 MHz Guaranteed: 19.8 dB @ 125 MHz Guaranteed: 25.38 dB @ 200 MHz Guaranteed: 28.59 dB @ 250 MHz Guaranteed: 31.53 dB @ 300 MHz Guaranteed: 36.85 dB @ 400 MHz Guaranteed: 41.63 dB @ 500 MHz
<b>Power Sum Alien Near-End Crosstalk [Psanext]</b>	67 dB at 4 MHz 67 dB at 10 MHz 67 dB at 16 MHz 67 dB at 1 MHz 66.99 dB at 20 MHz 65.05 dB at 31.25 MHz 62.04 dB at 62.5 MHz 60 dB at 100 MHz 58.54 dB at 125 MHz 55.48 dB at 200 MHz 54.03 dB at 250 MHz 52.84 dB at 300 MHz 50.97 dB at 400 MHz 49.51 dB at 500 MHz
<b>Equal Level Far End Crosstalk [Elfext]</b>	65 dB at 1 MHz 53.19 dB at 4 MHz 45.23 dB at 10 MHz 41.15 dB at 16 MHz 39.21 dB at 20 MHz 35.34 dB at 31.25 MHz 29.31 dB at 62.5 MHz 25.23 dB at 100 MHz 23.3 dB at 125 MHz 19.21 dB at 200 MHz 17.27 dB at 250 MHz 15.69 dB at 300 MHz 13.19 dB at 400 MHz 11.25 dB at 500 MHz
<b>Power Sum Equal Level Far End Crosstalk [Pselfext]</b>	62.23 dB at 1 MHz 50.19 dB at 4 MHz 42.23 dB at 10 MHz 38.15 dB at 16 MHz 36.21 dB at 20 MHz 32.34 dB at 31.25 MHz 26.32 dB at 62.5 MHz 22.23 dB at 100 MHz 20.3 dB at 125 MHz 16.21 dB at 200 MHz 14.27 dB at 250 MHz 12.69 dB at 300 MHz 10.19 dB at 400 MHz 8.25 dB at 500 MHz
<b>Power Sum Attenuation To Alien Crosstalk Ratio Far-End [Psaacrf]</b>	67 dB at 1 MHz 64.96 dB at 4 MHz 57 dB at 10 MHz 52.92 dB at 16 MHz 50.98 dB at 20 MHz 47.1 dB at 31.25 MHz 41.08 dB at 62.5 MHz 37 dB at 100 MHz 35.06 dB at 125 MHz 30.98 dB at 200 MHz 29.04 dB at 250 MHz 27.46 dB at 300 MHz 24.96 dB at 400 MHz 23.02 dB at 500 MHz
<b>Coupling Attenuation</b>	>= 85 dB from 30...100 MHz conforming to IEC 61156-5, ed. 2.1 type I >= 85 - 20 x log10(f / 100) dB from 100...1000 MHz
<b>Bending Radius</b>	Minimum bending radius after installation: 4 x overall diameter Minimum bending radius during installation: 8 x overall diameter

Cable Outer Diameter	5.6 mm
Transfer Impedance	<= 10 mOhm/m at 10 MHz <= 20 mOhm/m at 30 MHz <= 30 mOhm/m at 100 MHz <= 10 mOhm/m at 1 MHz conforming to IEC 61156-5, ed. 2.1 (grade 1)
Cable Weight	37 kg
Segregation Class (No Electromagnetic Barrier)	Class d conforming to EN 50174-2
Targeted Region	Europe

## Environment

Ambient Air Temperature For Installation	0...50 °C
Ambient Air Temperature For Operation	-20...60 °C
Ambient Air Temperature For Storage	-20...60 °C
Temperature Resistance	60 °C
Directives	2014/35/EU - low voltage directive
Flame Retardance	LSFRZH
Standards	EN 50173-1 ISO 11801

## Packing Units

Unit Type Of Package 1	PCE
Number Of Units In Package 1	1
Package 1 Height	10 cm
Package 1 Width	10 cm
Package 1 Length	4226 cm
Package 1 Weight	15 kg
Unit Type Of Package 2	S06
Number Of Units In Package 2	1
Package 2 Height	73.5 cm
Package 2 Width	60 cm
Package 2 Length	80 cm
Package 2 Weight	28 kg