

# Product data sheet

Specifications



## Expansion module, Modicon M171/ M172/M173, performance 14 IO

TM171EP14R

### Main

Range Of Product	Modicon M171/M172
Product Or Component Type	Additional I/O module
Product Specific Application	HVAC and pumping solution
Total Inputs/Outputs	14
Discrete Input Number	4
Discrete Output Number	1 for relay outputs SPDT with independent common 3 for relay outputs SPST with same common
Discrete Output Current	3 A for relay
Analogue Input Number	4 configurable by pair
Analogue Output Number	2 voltage, range: 0...10 V

### Complementary

Number Of Port	1 CAN port - screw terminal block
Input/Output Number	2 analog output(s) 4 digital output(s) 4 analog input(s) 4 digital input(s)
Discrete Input Logic	Sink or source (positive/negative)
Discrete Input Voltage	24 V AC/DC
Discrete Input Current	2.5 mA
Input Impedance	20 kOhm
Analogue Input Type	voltage 0...5 V (ratiometric) current 4...20 mA voltage 0...10 V NTC temperature probe - 50...110 °C - resolution: 0.1 °C NTC temperature probe - 40...137 °C - resolution: 0.1 °C (extended) PTC temperature probe - 50...150 °C - resolution: 0.1 °C
Sensor Power Supply	12 V DC at 85 mA
[Us] Rated Supply Voltage	24 V

### Packing Units

Unit Type Of Package 1	PCE
Number Of Units In Package 1	1
Package 1 Height	13.000 cm
Package 1 Width	9.100 cm
Package 1 Length	19.000 cm

Disclaimer: This documentation is not intended as a substitute for and is not to be used for determining suitability or reliability of these products for specific user applications

Package 1 Weight	231.000 g
Unit Type Of Package 2	S02
Number Of Units In Package 2	6
Package 2 Height	15.000 cm
Package 2 Width	30.000 cm
Package 2 Length	40.000 cm
Package 2 Weight	1.700 kg

## Sustainability

**Green Premium™ label** is Schneider Electric's commitment to delivering products with best-in-class environmental performance. Green Premium promises compliance with the latest regulations, transparency on environmental impacts, as well as circular and low-CO<sub>2</sub> products.

**Guide to assessing product sustainability** is a white paper that clarifies global eco-label standards and how to interpret environmental declarations.

[Learn more about Green Premium >](#)

[Guide to assess a product's sustainability >](#)



Transparency   RoHS/REACH

## Resource performance

✓ Upgradeable Through Digital Modules  
And Upgraded Components

## Well-being performance

✓ Mercury Free

✓ Rohs Exemption Information   Yes

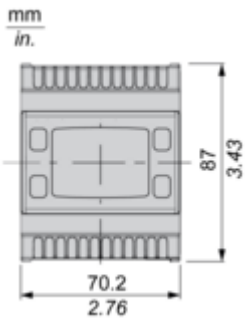
## Certifications & Standards

Reach Regulation	<a href="#">REACH Declaration</a>
Eu Rohs Directive	Pro-active compliance (Product out of EU RoHS legal scope)
China Rohs Regulation	<a href="#">China RoHS declaration</a>
Environmental Disclosure	<a href="#">Product Environmental Profile</a>
Weee	The product must be disposed on European Union markets following specific waste collection and never end up in rubbish bins
Circularity Profile	<a href="#">End of Life Information</a>
California Proposition 65	WARNING: This product can expose you to chemicals including: Lead and lead compounds, which is known to the State of California to cause cancer and birth defects or other reproductive harm. For more information go to <a href="http://www.P65Warnings.ca.gov">www.P65Warnings.ca.gov</a>

Dimensions Drawings

Dimensions

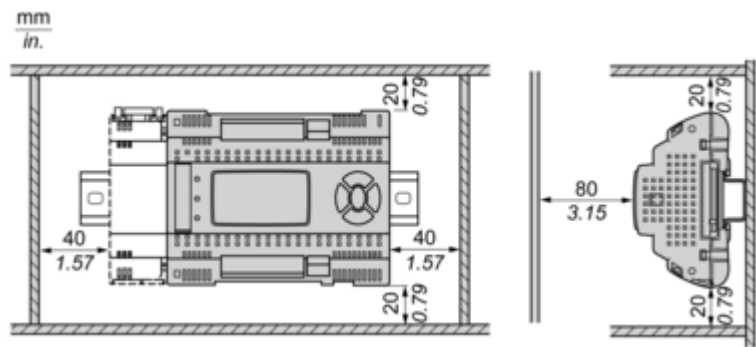
---



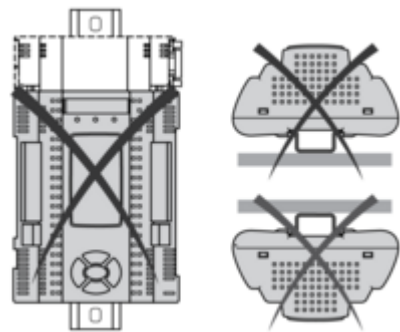
Mounting and Clearance

Mounting and Clearance

Clearance



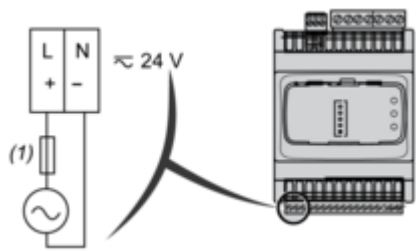
Misplacement



Connections and Schema

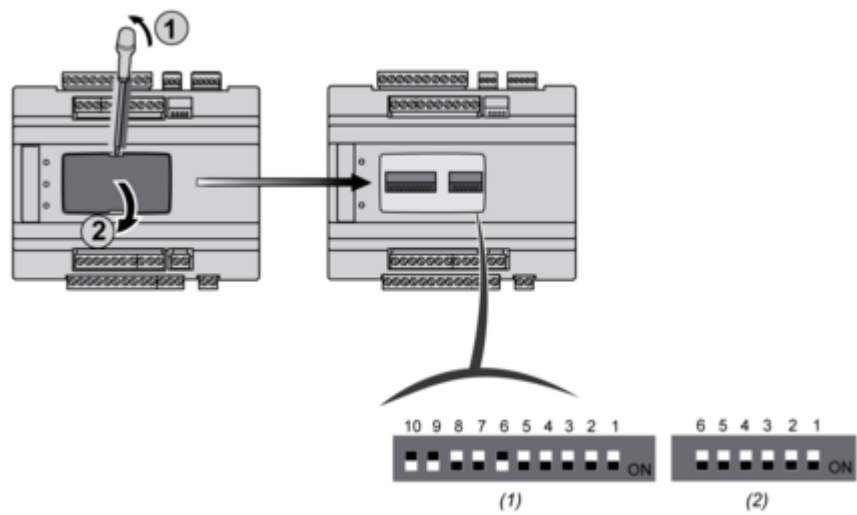
Power Supply

---



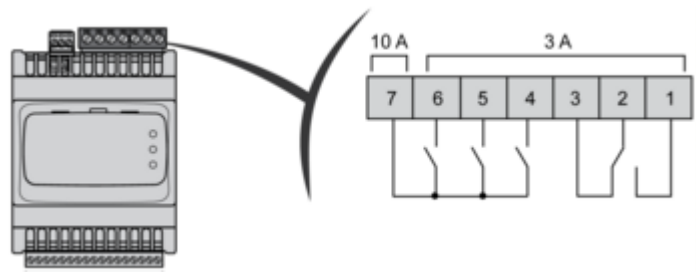
(1) Type T fuse 1.25 A

6 - 10 DipSwitches



- (1) 10 DIP SWITCH
- (2) 6 DIP SWITCH

Digital Outputs

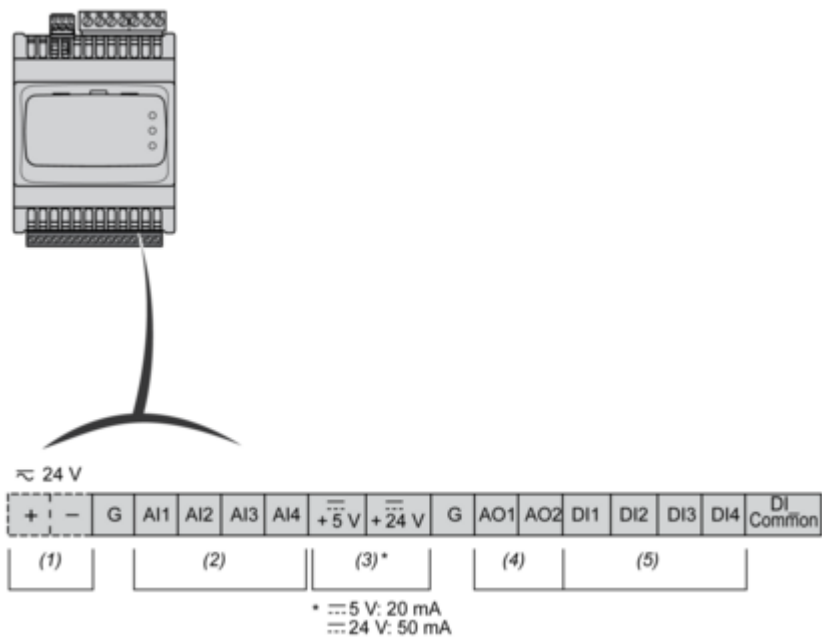


N°	Pin -out
1	DO1-N.O.
2	COMMON DO1
3	DO1-N.C.
4	DO2-N.O.
5	DO3-N.O.
6	DO4-N.O.
7	Common DO2, DO3,DO4

N.C.: Normally Closed  
N.O.: Normally Open



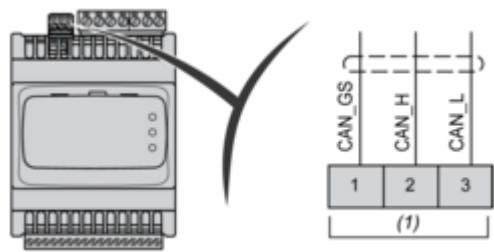
Low Voltage I/O



- (1) Power Supply
- (2) Analog Input
- (3) Power Out
- (4) Analog Output
- (5) Digital Input

Expansion Bus (CAN)

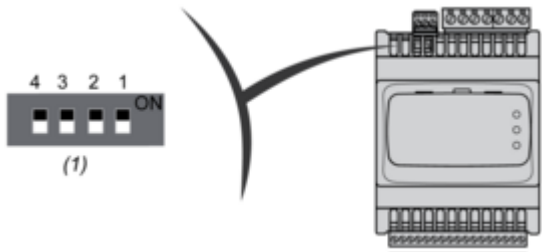
---



(1) CAN

4 DipSwitches

---



(1) LOW Address