



Main

Range of product	Modicon M171
Product or component type	Communication module
Communication port protocol	Modbus RTU BACnet MS/TP RS485

Complementary

Integrated connection type	RS485 wire crimp - twisted pair
Adjustment	Pitch 3.81 mm
Electrical connection	Removable screw terminal block
Physical interface	90° insertion - 2.5 mm ² cable
Supply	Via base board EVD/EVC
Product compatibility	Logic controller M171 performance Logic controller M172 performance
Product weight	0.077 kg

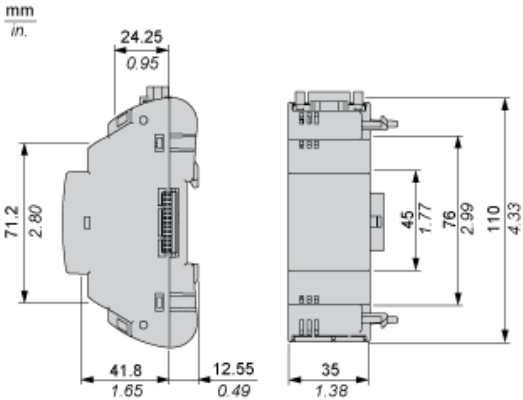
Environment

Product certifications	CE CSA cURus EAC
Marking	CE
IP degree of protection	IP20
Ambient air temperature for operation	-10...55 °C
Ambient air temperature for storage	-20...85 °C
Relative humidity	10...90 % without condensation

Offer Sustainability

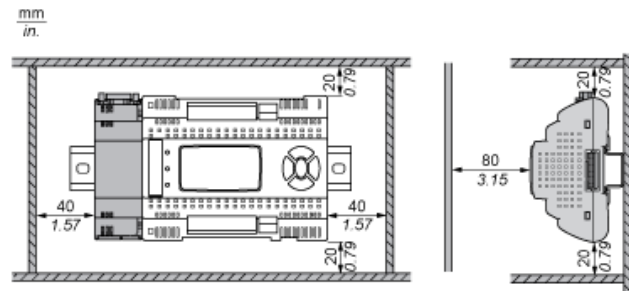
RoHS (date code: YYWW)	Compliant - since 1429 - Schneider Electric declaration of conformity Schneider Electric declaration of conformity
REACH	Reference not containing SVHC above the threshold Reference not containing SVHC above the threshold

Dimensions

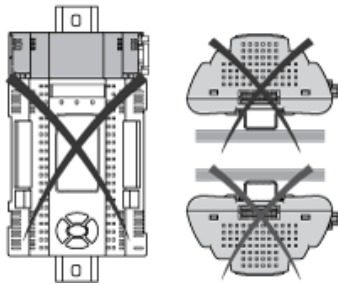


Mounting and Clearance

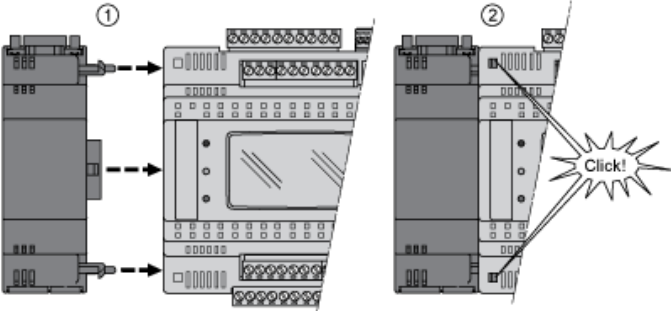
Clearance



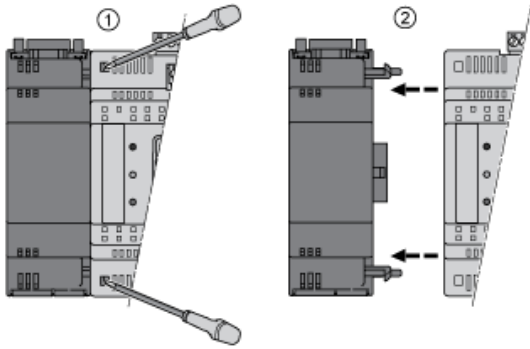
Misplacement



Mounting on Controller



Dismounting



Connections and Schema

RS 485 Communication Module

TM171ARS485

