

Product data sheet

Specifications



M171 Perf. Plug-in LONWorks

TM171ALON

Main

Range Of Product	Modicon M171/M172
Product Or Component Type	Communication module
Communication Port Protocol	LonWorks

Complementary

Integrated Connection Type	LON wire crimp - twisted pair
Transmission Rate	78 kbits/s
Adjustment	Pitch 3.81 mm
Electrical Connection	removable screw terminal block
Physical Interface	90° insertion - 2.5 mm² cable
Supply	Via base board M171P/M172P
Local Signalling	1 LED (red) for service 1 LED (green) for status
Product Compatibility	Logic controller M171 performance Logic controller M172 performance
Net Weight	0.077 kg

Environment

Product Certifications	EAC CSA CE cURus
Marking	CE
Ip Degree Of Protection	IP20
Ambient Air Temperature For Operation	-10...55 °C
Ambient Air Temperature For Storage	-20...85 °C
Relative Humidity	10...90 % without condensation

Packing Units

Unit Type Of Package 1	PCE
Number Of Units In Package 1	1
Package 1 Height	9.0 cm
Package 1 Width	12.5 cm
Package 1 Length	13.3 cm

Disclaimer: This documentation is not intended as a substitute for and is not to be used for determining suitability or reliability of these products for specific user applications

Package 1 Weight	160.0 g
Unit Type Of Package 2	S01
Number Of Units In Package 2	4
Package 2 Height	15.0 cm
Package 2 Width	15.0 cm
Package 2 Length	40.0 cm
Package 2 Weight	836.0 g

Sustainability


Green Premium™ label is Schneider Electric's commitment to delivering products with best-in-class environmental performance. Green Premium promises compliance with the latest regulations, transparency on environmental impacts, as well as circular and low-CO₂ products.

Guide to assessing product sustainability is a white paper that clarifies global eco-label standards and how to interpret environmental declarations.


[Learn more about Green Premium >](#)


[Guide to assess a product's sustainability >](#)

Resource performance

 Upgradeable Through Digital Modules
And Upgraded Components

Well-being performance

 Mercury Free

 RoHS Exemption Information [Yes](#)

Reach Regulation	REACH Declaration
------------------	-----------------------------------

Eu RoHS Directive	Pro-active compliance (Product out of EU RoHS legal scope)
-------------------	--

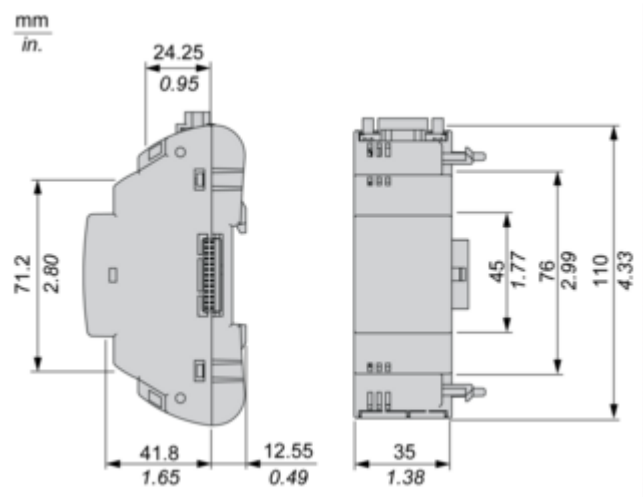
China RoHS Regulation	China RoHS declaration
-----------------------	--

Weee	The product must be disposed on European Union markets following specific waste collection and never end up in rubbish bins
------	---

California Proposition 65	WARNING: This product can expose you to chemicals including: Lead and lead compounds, which is known to the State of California to cause cancer and birth defects or other reproductive harm. For more information go to www.P65Warnings.ca.gov
---------------------------	---

Dimensions Drawings

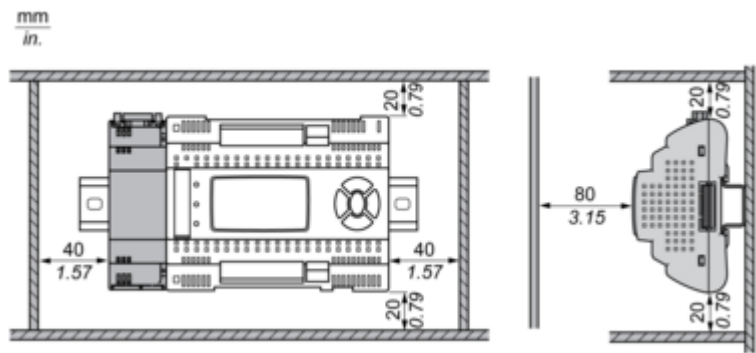
Dimensions



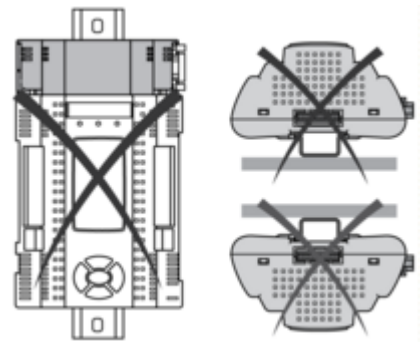
Mounting and Clearance

Mounting and Clearance

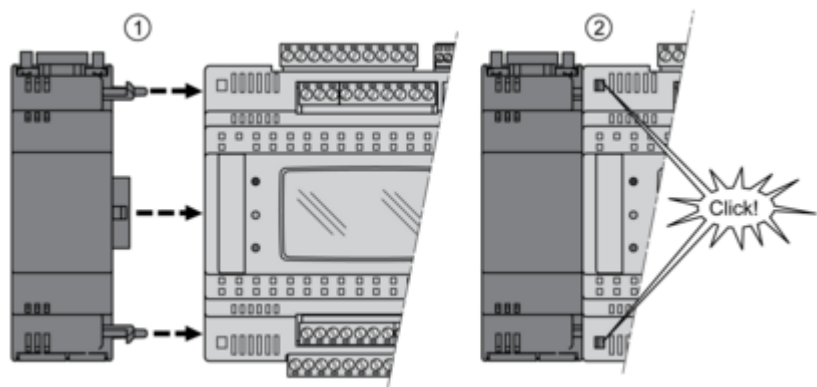
Clearance



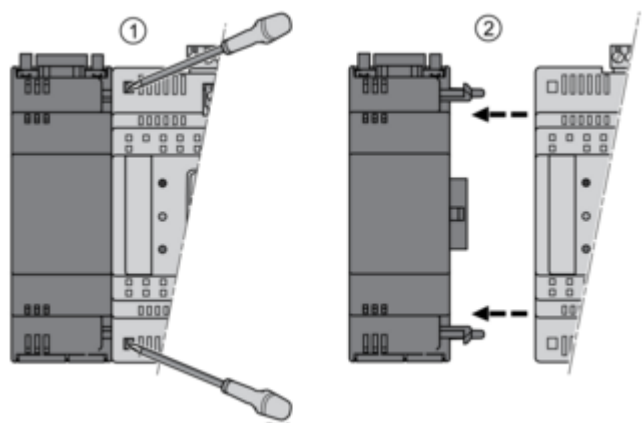
Misplacement



Mounting on Controller



Dismounting

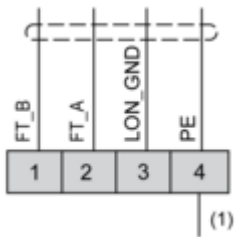
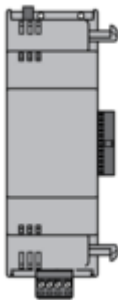


Connections and Schema

Connections and Schema

LonWorks Communication Module

TM171ALON



(1) PE to be connected externally to the protective earth.