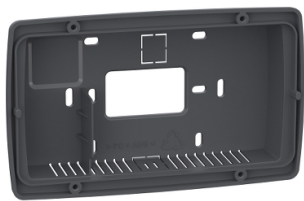


# Product data sheet

Specifications



## Modicon M171 Performance Grey wall support display

TM171ABKPG

### Main

Range Of Product	Modicon M171/M172
Accessory / Separate Part Category	Mounting accessory
Accessory / Separate Part Type	Mounting support

### Complementary

Product Or Component Type	Mounting support
Product Compatibility	Logic controller M171 performance flush mounting
Colour	Grey
Accessory / Separate Part Destination	Remote display
Product Specific Application	Wall mounting support
Fixing Mode	By screws
Width	160 mm
Depth	30 mm
Height	96 mm
Net Weight	0.015 kg

### Environment

Standards	UL 94
-----------	-------

### Packing Units

Unit Type Of Package 1	PCE
Number Of Units In Package 1	1
Package 1 Height	3.1 cm
Package 1 Width	9.6 cm
Package 1 Length	16.0 cm
Package 1 Weight	69.0 g
Unit Type Of Package 2	S01
Number Of Units In Package 2	10
Package 2 Height	15.0 cm
Package 2 Width	15.0 cm
Package 2 Length	40.0 cm
Package 2 Weight	892.0 g

Disclaimer: This documentation is not intended as a substitute for and is not to be used for determining suitability or reliability of these products for specific user applications

# Sustainability


**Green Premium™ label** is Schneider Electric’s commitment to delivering products with best-in-class environmental performance. Green Premium promises compliance with the latest regulations, transparency on environmental impacts, as well as circular and low-CO<sub>2</sub> products.

**Guide to assessing product sustainability** is a white paper that clarifies global eco-label standards and how to interpret environmental declarations.

[Learn more about Green Premium >](#)

[Guide to assess a product’s sustainability >](#)

## Well-being performance

 Mercury Free

Reach Regulation	<a href="#">REACH Declaration</a>
Eu Rohs Directive	Not applicable, out of EU RoHS legal scope
China Rohs Regulation	<a href="#">China RoHS declaration</a>
Weee	The product must be disposed on European Union markets following specific waste collection and never end up in rubbish bins
California Proposition 65	WARNING: This product can expose you to chemicals including: Lead and lead compounds, which is known to the State of California to cause cancer and birth defects or other reproductive harm. For more information go to <a href="#">www.P65Warnings.ca.gov</a>