

# Product data sheet

Specifications



## standard analog output HART kit STB - 4..20 mA - 2 O - 15 bits + sign

STBACO8220K

### Main

Range Of Product	Modicon STB distributed I/O solution
Product Or Component Type	Standard analog output kit
Kit Composition	STBACO8220 module STBXBA2000 base STBXTS2100, 6-terminal spring clamp connector STBXTS1100, 6-terminal screw type connector
Analogue Output Type	Current: 4...20 mA
Analogue Output Number	2
Analogue Output Resolution	15 bits + sign

### Complementary

Analogue Output Current	0.02 A
Response Time	40 ms plus update time
Cold Swapping	Yes
Hot Swapping	Yes for standard NIMs
Fallback	State 0 basic NIMs User configurable standard NIMs
Data Format	EN 61131-2 IEC 61131-2
Update Time	8 ms
Integral Linearity	+/- 0.05 %FS
Differential Linearity	Monotonic
Absolute Accuracy Error	+/- 0.3 % of full scale at 25 °C
Temperature Drift	+/-0.005 %/°C
Insulation Between Channels And Logic Bus	1500 V for 1 minute
Insulation Between Channels And Actuator Bus	200 V
Product Compatibility	Power distribution module STBPDT3100/3105 Mounting base STBXBA1000
[Us] Rated Supply Voltage	24 V DC
Supply	Power distribution module
Current Consumption	210 mA at 5 V DC for logic bus
Marking	CE
Overvoltage Category	II

Disclaimer: This documentation is not intended as a substitute for and is not to be used for determining suitability or reliability of these products for specific user applications

Status Led	1 LED (green) module status (RDY) 1 LED (red) module error (ERR)
Depth	70 mm
Height	18.4 mm
Width	128.3 mm

## Environment

Product Certifications	UL FM Class 1 Division 2 CSA
Pollution Degree	2 conforming to IEC 60664-1
Operating Altitude	<= 2000 m
Ip Degree Of Protection	IP20 conforming to IEC 61131-2 class 1
Ambient Air Temperature For Operation	0...60 °C (without)
Ambient Air Temperature For Operation	32...140 °F without
Ambient Air Temperature For Storage	-40...85 °C without
Ambient Air Temperature For Storage	-40...185 °F without
Relative Humidity	95 % at 60 °C without condensation
Vibration Resistance	3 gn at 58...150 Hz on 35 x 7.5 mm symmetrical DIN rail 5 gn at 58...150 Hz on 35 x 15 mm symmetrical DIN rail +/-0.35 mm at 10...58 Hz
Shock Resistance	30 gn for 11 ms conforming to IEC 88 reference 2-27

## Packing Units

Unit Type Of Package 1	PCE
Number Of Units In Package 1	1
Package 1 Height	2.700 cm
Package 1 Width	8.000 cm
Package 1 Length	13.000 cm
Package 1 Weight	136.000 g
Unit Type Of Package 2	S02
Number Of Units In Package 2	28
Package 2 Height	15.000 cm
Package 2 Width	30.000 cm
Package 2 Length	40.000 cm
Package 2 Weight	4.234 kg

## Sustainability



**Green Premium™ label** is Schneider Electric's commitment to delivering products with best-in-class environmental performance. Green Premium promises compliance with the latest regulations, transparency on environmental impacts, as well as circular and low-CO<sub>2</sub> products.

**Guide to assessing product sustainability** is a white paper that clarifies global eco-label standards and how to interpret environmental declarations.

[Learn more about Green Premium >](#)

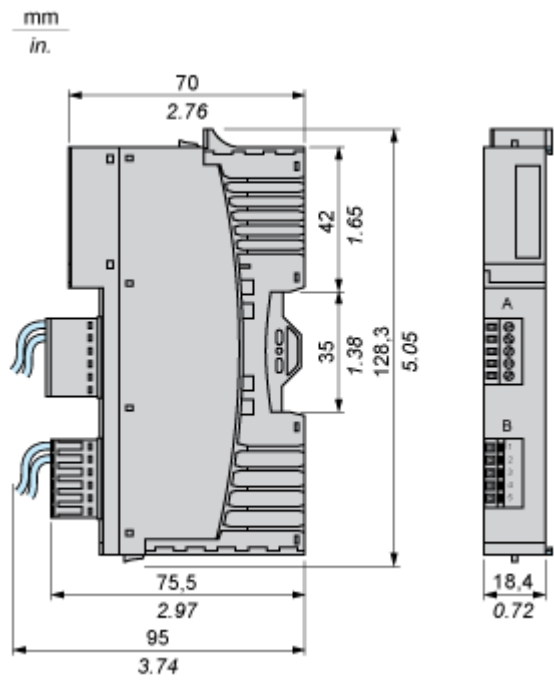
[Guide to assess a product's sustainability >](#)

## Well-being performance

 Mercury Free	
 Rohs Exemption Information	<a href="#">Yes</a>
Reach Regulation	<a href="#">REACH Declaration</a>
Eu Rohs Directive	Pro-active compliance (Product out of EU RoHS legal scope)
China Rohs Regulation	<a href="#">China RoHS declaration</a>
Weee	The product must be disposed on European Union markets following specific waste collection and never end up in rubbish bins
California Proposition 65	WARNING: This product can expose you to chemicals including: Lead and lead compounds, which is known to the State of California to cause cancer and birth defects or other reproductive harm. For more information go to <a href="http://www.P65Warnings.ca.gov">www.P65Warnings.ca.gov</a>

Dimensions Drawings

Dimensions

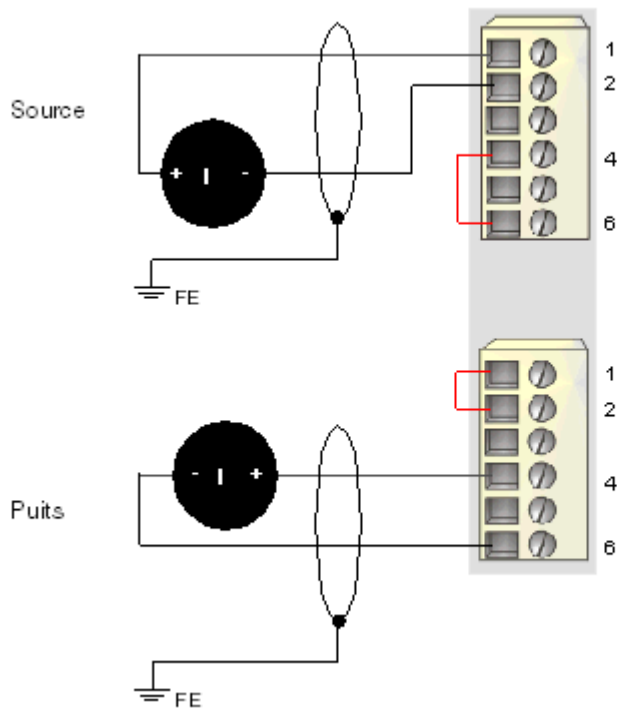


Connections and Schema

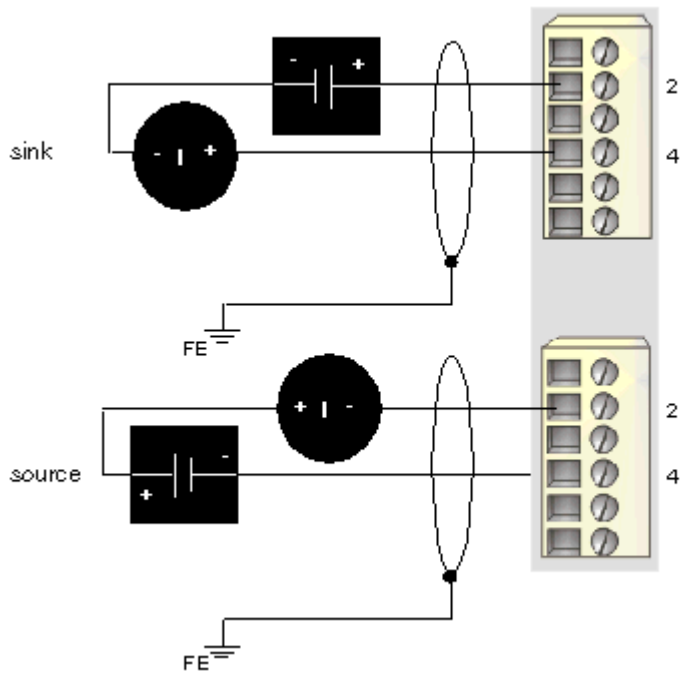
Wiring Diagrams

Examples

2 non-isolated analog actuators, 24 VDC supplied by the PDM



2 isolated analog actuators, external 24 VDC power supply



Pin	Top Connections	Bottom Connections
1	+24 VDC loop supply	+24 VDC loop supply

Pin	Top Connections	Bottom Connections
2	output to actuator 1	output to actuator 2
3	no connection	no connection
4	output channel return	output channel return
5	no connection	no connection
6	loop power return (to the module)	loop power return (to the module)