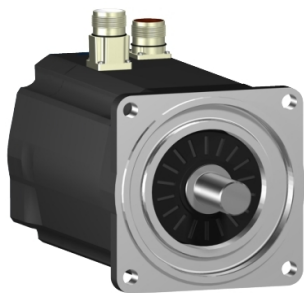


# Product data sheet

Specifications



servo motor SH3 140  
33,4Nm,key,multi,nobrake,str.conn,I  
P54/IP65,4k RPM

SH31404P12A1000

## Main

Range Compatibility	PacDrive 3
Product Or Component Type	Servo motor
Device Short Name	SH3.....P

## Complementary

Maximum Mechanical Speed	4000 rpm
[Us] Rated Supply Voltage	115...480 V
Network Number Of Phases	Three phase
Continuous Stall Current	21.3 A
Continuous Stall Torque	33.4 N.m at 115...480 V three phase
Continuous Power	4040 W
Peak Stall Torque	131.9 N.m at 115...480 V three phase
Nominal Output Power	2370 W at 115 V single phase 4130 W at 230 V single phase 4040 W at 400 V three phase 4190 W at 480 V three phase
Nominal Torque	30.2 N.m at 115 V single phase 26.3 N.m at 230 V single phase 12.9 N.m at 400 V three phase 11.1 N.m at 480 V three phase
Nominal Speed	750 rpm at 115 V single phase 1500 rpm at 230 V single phase 3000 rpm at 400 V three phase 3600 rpm at 480 V three phase
Maximum Current Irms	95.6 A
Shaft End	Parallel key
Shaft Diameter	24 mm
Shaft Length	50 mm
Key Width	8 mm
Ip Degree Of Protection	IP54 shaft bushing without shaft seal ring: conforming to EN/IEC 60034-5 IP65 motor: conforming to EN/IEC 60034-5 IP65 shaft bushing: conforming to EN/IEC 60034-5
Encoder Type	Absolute multiturn SinCos Hiperface
Speed Feedback Resolution	128 periods
Holding Brake	Without
Mounting Support	International standard flange
Motor Flange Size	140 mm

Disclaimer: This documentation is not intended as a substitute for and is not to be used for determining suitability or reliability of these products for specific user applications

Electrical Connection	Straight connector
Torque Constant	1.57 N.m/A at 120 °C
Back Emf Constant	104 V/krpm at 20 °C
Number Of Motor Poles	5
Rotor Inertia	23.7 kg.cm²
Stator Resistance	0.28 Ohm
Stator Inductance	5.945 mH
Maximum Radial Force Fr	2660 N at 1000 rpm 2110 N at 2000 rpm 1840 N at 3000 rpm
Maximum Axial Force Fa	300 N
Type Of Cooling	Natural convection
Length	382.5 mm
Centring Collar Diameter	130 mm
Centring Collar Depth	3.5 mm
Number Of Mounting Holes	4
Mounting Holes Diameter	11 mm
Circle Diameter Of The Mounting Holes	165 mm
Net Weight	26 kg

## Packing Units

Unit Type Of Package 1	PCE
Number Of Units In Package 1	1
Package 1 Weight	25.946 kg

## Contractual warranty

Warranty	18 months
----------	-----------

## Sustainability

**Green Premium™** label is Schneider Electric's commitment to delivering products with best-in-class environmental performance. Green Premium promises compliance with the latest regulations, transparency on environmental impacts, as well as circular and low-CO<sub>2</sub> products.

**Guide to assessing product sustainability** is a white paper that clarifies global eco-label standards and how to interpret environmental declarations.

[Learn more about Green Premium >](#)

[Guide to assess a product's sustainability >](#)



Transparency   RoHS/REACH

## Well-being performance

✓ Mercury Free

✓ Rohs Exemption Information   [Yes](#)

✓ Pvc Free

## Certifications & Standards

Reach Regulation	<a href="#">REACH Declaration</a>
Eu Rohs Directive	Pro-active compliance (Product out of EU RoHS legal scope)
China Rohs Regulation	<a href="#">China RoHS declaration</a>
Environmental Disclosure	<a href="#">Product Environmental Profile</a>
Weee	The product must be disposed on European Union markets following specific waste collection and never end up in rubbish bins
Circularity Profile	No need of specific recycling operations
California Proposition 65	WARNING: This product can expose you to chemicals including: Lead and lead compounds, which is known to the State of California to cause cancer and birth defects or other reproductive harm. For more information go to <a href="http://www.P65Warnings.ca.gov">www.P65Warnings.ca.gov</a>