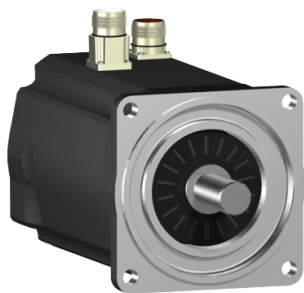


Product data sheet

Specifications



servo motor SH3 140
27,8Nm,nokey,single,brake,str.conn,
IP65/IP65,4k RPM

SH31403P01F1100

ⓘ Discontinued

Main

Range Compatibility	PacDrive 3
Product Or Component Type	Servo motor
Device Short Name	SH3.....P

Complementary

Maximum Mechanical Speed	4000 rpm
[Us] Rated Supply Voltage	115...480 V
Network Number Of Phases	Three phase
Continuous Stall Current	17.6 A
Continuous Stall Torque	27.8 N.m at 115...480 V three phase
Continuous Power	4100 W
Peak Stall Torque	90.2 N.m at 115...480 V three phase
Nominal Output Power	1940 W at 115 V single phase 3330 W at 230 V single phase 4050 W at 400 V three phase 3430 W at 480 V three phase
Nominal Torque	24.7 N.m at 115 V single phase 21.2 N.m at 230 V single phase 12.9 N.m at 400 V three phase 9.1 N.m at 480 V three phase
Nominal Speed	750 rpm at 115 V single phase 1500 rpm at 230 V single phase 3000 rpm at 400 V three phase 3600 rpm at 480 V three phase
Maximum Current Irms	61 A
Shaft End	Smooth shaft
Shaft Diameter	24 mm
Shaft Length	50 mm
Ip Degree Of Protection	IP65 motor: conforming to EN/IEC 60034-5 IP65 shaft bushing: conforming to EN/IEC 60034-5
Encoder Type	Absolute single turn SinCos Hiperface
Speed Feedback Resolution	128 periods
Holding Brake	With
Holding Torque	36 N.m
Mounting Support	International standard flange

Disclaimer: This documentation is not intended as a substitute for and is not to be used for determining suitability or reliability of these products for specific user applications

Motor Flange Size	140 mm
Electrical Connection	Straight connector
Torque Constant	1.58 N.m/A at 120 °C
Back Emf Constant	105 V/krpm at 20 °C
Number Of Motor Poles	5
Rotor Inertia	23.44 kg.cm²
Stator Resistance	0.4 Ohm
Stator Inductance	7.72 mH
Maximum Radial Force Fr	2420 N at 1000 rpm 1920 N at 2000 rpm 1670 N at 3000 rpm
Maximum Axial Force Fa	300 N
Type Of Cooling	Natural convection
Length	365.5 mm
Centring Collar Diameter	130 mm
Centring Collar Depth	3.5 mm
Number Of Mounting Holes	4
Mounting Holes Diameter	11 mm
Circle Diameter Of The Mounting Holes	165 mm
Net Weight	23.1 kg

Packing Units

Unit Type Of Package 1	PCE
Number Of Units In Package 1	1
Package 1 Height	1 cm
Package 1 Width	1 cm
Package 1 Length	1 cm
Package 1 Weight	1 kg

Contractual warranty

Warranty	18 months
----------	-----------

Sustainability

Green Premium™ label is Schneider Electric's commitment to delivering products with best-in-class environmental performance. Green Premium promises compliance with the latest regulations, transparency on environmental impacts, as well as circular and low-CO₂ products.

Guide to assessing product sustainability is a white paper that clarifies global eco-label standards and how to interpret environmental declarations.

[Learn more about Green Premium >](#)

[Guide to assess a product's sustainability >](#)



Transparency RoHS/REACH

Well-being performance

✓ Mercury Free

✓ Rohs Exemption Information [Yes](#)

✓ Pvc Free

Certifications & Standards

Reach Regulation	REACH Declaration
Eu Rohs Directive	Pro-active compliance (Product out of EU RoHS legal scope)
China Rohs Regulation	China RoHS declaration
Environmental Disclosure	Product Environmental Profile
Weee	The product must be disposed on European Union markets following specific waste collection and never end up in rubbish bins
Circularity Profile	No need of specific recycling operations
California Proposition 65	WARNING: This product can expose you to chemicals including: Lead and lead compounds, which is known to the State of California to cause cancer and birth defects or other reproductive harm. For more information go to www.P65Warnings.ca.gov