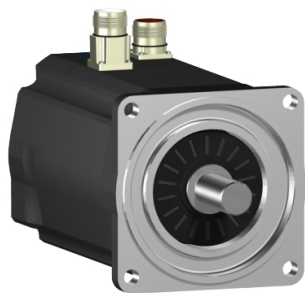


Product data sheet

Specifications



servo motor SH3 140
11,1Nm,key,single,nobrake,str.conn,
IP54/IP65,4k RPM

SH31401M11A1000

Main

Range Compatibility	PacDrive 3
Product Or Component Type	Servo motor
Device Short Name	SH3.....M

Complementary

Maximum Mechanical Speed	4000 rpm
[Us] Rated Supply Voltage	115...480 V
Network Number Of Phases	Three phase
Continuous Stall Current	4 A
Continuous Stall Torque	11.1 N.m at 115...480 V three phase
Continuous Power	1700 W
Peak Stall Torque	27 N.m at 115...480 V three phase
Nominal Output Power	430 W at 115 V single phase 860 W at 230 V single phase 1670 W at 400 V three phase 1960 W at 480 V three phase
Nominal Torque	11 N.m at 115 V single phase 10.95 N.m at 230 V single phase 10.6 N.m at 400 V three phase 10.4 N.m at 480 V three phase
Nominal Speed	375 rpm at 115 V single phase 750 rpm at 230 V single phase 1500 rpm at 400 V three phase 1800 rpm at 480 V three phase
Maximum Current Irms	10.8 A
Shaft End	Parallel key
Shaft Diameter	24 mm
Shaft Length	50 mm
Key Width	8 mm
Ip Degree Of Protection	IP54 shaft bushing without shaft seal ring: conforming to EN/IEC 60034-5 IP65 motor: conforming to EN/IEC 60034-5 IP65 shaft bushing: conforming to EN/IEC 60034-5
Encoder Type	Absolute single turn SinCos Hiperface
Speed Feedback Resolution	128 periods
Holding Brake	Without
Mounting Support	International standard flange
Motor Flange Size	140 mm

Disclaimer: This documentation is not intended as a substitute for and is not to be used for determining suitability or reliability of these products for specific user applications

Electrical Connection	Rotatable right angled connector
Torque Constant	2.78 N.m/A at 120 °C
Back Emf Constant	193 V/krpm at 20 °C
Number Of Motor Poles	5
Rotor Inertia	7.41 kg.cm²
Stator Resistance	5.3 Ohm
Stator Inductance	88.55 mH
Maximum Radial Force Fr	1930 N at 1000 rpm 1530 N at 2000 rpm 1340 N at 3000 rpm
Maximum Axial Force Fa	300 N
Type Of Cooling	Natural convection
Length	217.5 mm
Centring Collar Diameter	130 mm
Centring Collar Depth	3.5 mm
Number Of Mounting Holes	4
Mounting Holes Diameter	11 mm
Circle Diameter Of The Mounting Holes	165 mm
Net Weight	11.9 kg

Packing Units

Unit Type Of Package 1	PCE
Number Of Units In Package 1	1

Contractual warranty

Warranty	18 months
----------	-----------