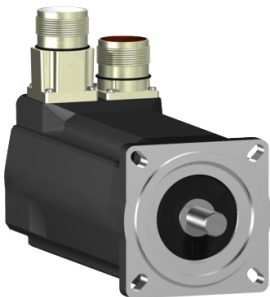


Product data sheet

Specifications



servo motor SH3 070
2,94Nm,key,multi,nobrake,str.conn,I
P65/IP65,8k RPM

SH30703M12A1100

Main

| | |
|---------------------------|-------------|
| Range Compatibility | PacDrive 3 |
| Product Or Component Type | Servo motor |
| Device Short Name | SH3.....M |

Complementary

| | |
|---------------------------|--|
| Maximum Mechanical Speed | 8000 rpm |
| [Us] Rated Supply Voltage | 115...480 V |
| Network Number Of Phases | Three phase |
| Continuous Stall Current | 2.1 A |
| Continuous Stall Torque | 2.94 N.m at 115...480 V three phase |
| Continuous Power | 830 W |
| Peak Stall Torque | 11.3 N.m at 115...480 V three phase |
| Nominal Output Power | 240 W at 115 V single phase 460 W at 230 V single phase 880 W at 400 V three phase 1030 W at 480 V three phase |
| Nominal Torque | 3.05 N.m at 115 V single phase 2.95 N.m at 230 V single phase 2.63 N.m at 400 V three phase 2.63 N.m at 480 V three phase |
| Nominal Speed | 750 rpm at 115 V single phase 1500 rpm at 230 V single phase 3000 rpm at 400 V three phase 3600 rpm at 480 V three phase |
| Maximum Current Irms | 8.7 A |
| Shaft End | Parallel key |
| Shaft Diameter | 14 mm |
| Shaft Length | 30 mm |
| Key Width | 5 mm |
| Ip Degree Of Protection | IP65 motor: conforming to EN/IEC 60034-5 IP65 shaft bushing: conforming to EN/IEC 60034-5 |
| Encoder Type | Absolute multiturn SinCos Hiperface |
| Speed Feedback Resolution | 128 periods |
| Holding Brake | Without |
| Mounting Support | International standard flange |
| Motor Flange Size | 70 mm |

Disclaimer: This documentation is not intended as a substitute for and is not to be used for determining suitability or reliability of these products for specific user applications

| | |
|---------------------------------------|--|
| Electrical Connection | Rotatable right angled connector |
| Torque Constant | 1.4 N.m/A at 120 °C |
| Back Emf Constant | 95 V/krpm at 20 °C |
| Number Of Motor Poles | 3 |
| Rotor Inertia | 0.58 kg.cm² |
| Stator Resistance | 10.7 Ohm |
| Stator Inductance | 76.85 mH |
| Maximum Radial Force Fr | 730 N at 1000 rpm 580 N at 2000 rpm 510 N at 3000 rpm 460 N at 4000 rpm 430 N at 5000 rpm 400 N at 6000 rpm |
| Maximum Axial Force Fa | 80 N |
| Type Of Cooling | Natural convection |
| Length | 220 mm |
| Centring Collar Diameter | 60 mm |
| Centring Collar Depth | 2.5 mm |
| Number Of Mounting Holes | 4 |
| Mounting Holes Diameter | 5.5 mm |
| Circle Diameter Of The Mounting Holes | 82 mm |
| Net Weight | 3.6 kg |

Contractual warranty

| | |
|----------|-----------|
| Warranty | 18 months |
|----------|-----------|