

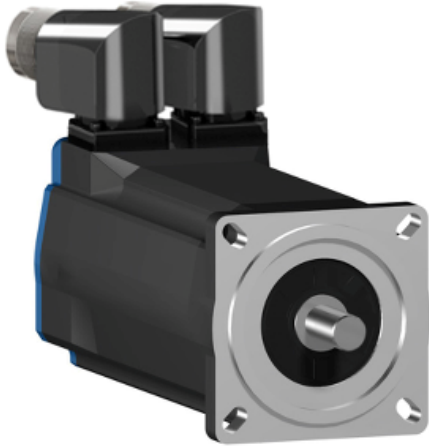
# Product data sheet

## Characteristics

# SH30703M01A2200

servo motor SH3 070

3,1Nm,nokey,single,nobrake,90°conn.IP65/  
IP67,8k RPM



### Main

Range compatibility	PacDrive 3
Product or component type	Servo motor
Device short name	SH3.....M

### Complementary

Maximum mechanical speed	8000 rpm
[Us] rated supply voltage	115...480 V
Network number of phases	Three phase
Continuous stall current	2.1 A
Continuous stall torque	3.1 N.m at 115...480 V three phase
Peak stall torque	11.3 N.m at 115...480 V three phase
Nominal output power	880 W at 400 V three phase 240 W at 115 V three phase 460 W at 230 V three phase 1030 W at 480 V three phase
Nominal torque	3.05 N.m at 115 V three phase 2.95 N.m at 230 V three phase 2.72 N.m at 480 V three phase 2.8 N.m at 400 V three phase
Nominal speed	750 rpm at 115 V three phase 1500 rpm at 230 V three phase 3000 rpm at 400 V three phase 3600 rpm at 480 V three phase
Maximum current Irms	8.7 A
Shaft end	Smooth shaft
Shaft diameter	14 mm
Shaft length	30 mm
Key width	5 mm
IP degree of protection	IP65 (motor) conforming to EN/IEC 60034-5 IP65 (shaft bushing) conforming to EN/IEC 60034-5 IP67 (housing) conforming to EN/IEC 60034-5
Encoder type	Absolute single turn SinCos Hiperface
Speed feedback resolution	128 periods

Disclaimer: This documentation is not intended as a substitute for and is not to be used for determining suitability or reliability of these products for specific user applications

Holding brake	Without
Holding torque	2 N.m
Mounting support	International standard flange
Motor flange size	70 mm
Electrical connection	Rotatable right angled connector
Torque constant	1.48 N.m/A at 120 °C
Back emf constant	95 V/krpm at 20 °C
Number of motor poles	3
Rotor inertia	0.58 kg.cm <sup>2</sup>
Stator resistance	10.7 Ohm
Stator inductance	76.85 mH
Maximum radial force Fr	400 N at 6000 rpm 430 N at 5000 rpm 460 N at 4000 rpm 510 N at 3000 rpm 580 N at 2000 rpm 730 N at 1000 rpm
Maximum axial force Fa	80 N
Type of cooling	Natural convection
Length	220 mm
Centring collar diameter	60 mm
Centring collar depth	2.5 mm
Number of mounting holes	4
Mounting holes diameter	5.5 mm
Circle diameter of the mounting holes	82 mm
Product weight	3.6 kg

### Contractual warranty

Warranty period	18 months
-----------------	-----------