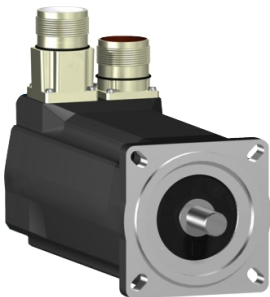


Product data sheet

Specifications



servo motor SH3 070
2,04Nm,key,single,brake,str.conn,IP
65/IP65,8k RPM

SH30702P11F1100

Main

Range Compatibility	PacDrive 3
Product Or Component Type	Servo motor
Device Short Name	SH3.....P

Complementary

Maximum Mechanical Speed	8000 rpm
[Us] Rated Supply Voltage	115...480 V
Network Number Of Phases	Three phase
Continuous Stall Current	2.9 A
Continuous Stall Torque	2.04 N.m at 115...480 V three phase
Continuous Power	1130 W
Peak Stall Torque	7.6 N.m at 115...480 V three phase
Nominal Output Power	340 W at 115 V single phase 660 W at 230 V single phase 1190 W at 400 V three phase 1360 W at 480 V three phase
Nominal Torque	2.15 N.m at 115 V single phase 2.1 N.m at 230 V single phase 1.8 N.m at 400 V three phase 1.8 N.m at 480 V three phase
Nominal Speed	1500 rpm at 115 V single phase 3000 rpm at 230 V single phase 6000 rpm at 400 V three phase 7200 rpm at 480 V three phase
Maximum Current Irms	11.8 A
Shaft End	Parallel key
Shaft Diameter	11 mm
Shaft Length	23 mm
Key Width	4 mm
Ip Degree Of Protection	IP65 motor: conforming to IEC 60034-5 IP65 shaft bushing: conforming to IEC 60034-5
Encoder Type	Absolute single turn SinCos Hiperface
Speed Feedback Resolution	128 periods
Holding Brake	With
Holding Torque	3 N.m
Mounting Support	International standard flange

Disclaimer: This documentation is not intended as a substitute for and is not to be used for determining suitability or reliability of these products for specific user applications

Motor Flange Size	70 mm
Electrical Connection	Rotatable right angled connector
Torque Constant	0.7 N.m/A at 120 °C
Back Emf Constant	48 V/krpm at 20 °C
Number Of Motor Poles	3
Rotor Inertia	0.482 kg.cm²
Stator Resistance	4.2 Ohm
Stator Inductance	29.65 mH
Maximum Radial Force Fr	710 N at 1000 rpm 560 N at 2000 rpm 490 N at 3000 rpm 450 N at 4000 rpm 410 N at 5000 rpm 390 N at 6000 rpm
Maximum Axial Force Fa	80 N
Type Of Cooling	Natural convection
Length	212.5 mm
Centring Collar Diameter	60 mm
Centring Collar Depth	2.5 mm
Number Of Mounting Holes	4
Mounting Holes Diameter	5.5 mm
Circle Diameter Of The Mounting Holes	82 mm
Net Weight	3 kg

Packing Units

Unit Type Of Package 1	PCE
Number Of Units In Package 1	1
Package 1 Weight	2.794 kg

Contractual warranty

Warranty	18 months
----------	-----------

Sustainability

Green Premium™ label is Schneider Electric's commitment to delivering products with best-in-class environmental performance. Green Premium promises compliance with the latest regulations, transparency on environmental impacts, as well as circular and low-CO₂ products.

Guide to assessing product sustainability is a white paper that clarifies global eco-label standards and how to interpret environmental declarations.

[Learn more about Green Premium >](#)

[Guide to assess a product's sustainability >](#)



Transparency RoHS/REACH

Well-being performance

✓ Mercury Free

✓ Rohs Exemption Information [Yes](#)

✓ Pvc Free

Certifications & Standards

Reach Regulation	REACH Declaration
Eu Rohs Directive	Pro-active compliance (Product out of EU RoHS legal scope)
China Rohs Regulation	China RoHS declaration
Environmental Disclosure	Product Environmental Profile
Weee	The product must be disposed on European Union markets following specific waste collection and never end up in rubbish bins
Circularity Profile	No need of specific recycling operations
California Proposition 65	WARNING: This product can expose you to chemicals including: Lead and lead compounds, which is known to the State of California to cause cancer and birth defects or other reproductive harm. For more information go to www.P65Warnings.ca.gov