

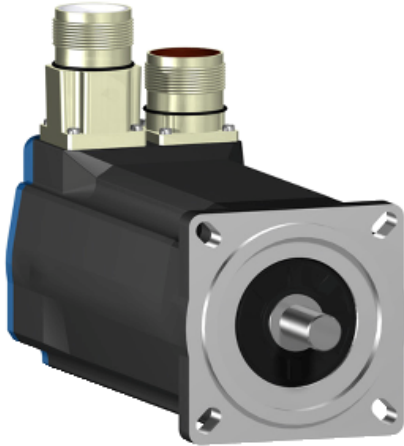
# Product data sheet

## Characteristics

# SH30702M12A1000

servo motor SH3 070

2,2Nm,key,multi,nobrake,str.conn,IP54/IP65,8k RPM



### Main

Range compatibility	PacDrive 3
Product or component type	Servo motor
Device short name	SH3.....M

### Complementary

Maximum mechanical speed	8000 rpm
[Us] rated supply voltage	115...480 V
Network number of phases	Three phase
Continuous stall current	1.5 A
Continuous stall torque	2.2 N.m at 115...480 V three phase
Peak stall torque	7.6 N.m at 115...480 V three phase
Nominal output power	700 W at 115 V three phase 340 W at 230 V three phase 660 W at 400 V three phase 780 W at 480 V three phase
Nominal torque	2.15 N.m at 230 V three phase 2.1 N.m at 400 V three phase 2.07 N.m at 480 V three phase 2.2 N.m at 115 V three phase
Nominal speed	750 rpm at 115 V three phase 1500 rpm at 230 V three phase 3000 rpm at 400 V three phase 3600 rpm at 480 V three phase
Maximum current Irms	6 A
Shaft end	Parallel key
Shaft diameter	11 mm
Shaft length	23 mm
Key width	4 mm
IP degree of protection	IP54 (shaft bushing without shaft seal ring) conforming to EN/IEC 60034-5 IP65 (motor) conforming to EN/IEC 60034-5 IP65 (shaft bushing) conforming to EN/IEC 60034-5
Encoder type	Absolute multiturn SinCos Hiperface
Speed feedback resolution	128 periods

Disclaimer: This documentation is not intended as a substitute for and is not to be used for determining suitability or reliability of these products for specific user applications

Holding brake	Without
Holding torque	2 N.m
Mounting support	International standard flange
Motor flange size	70 mm
Electrical connection	Straight connector
Torque constant	1.47 N.m/A at 120 °C
Back emf constant	95.9 V/krpm at 20 °C
Number of motor poles	3
Rotor inertia	0.41 kg.cm <sup>2</sup>
Stator resistance	16.4 Ohm
Stator inductance	115.7 mH
Maximum radial force Fr	390 N at 6000 rpm 410 N at 5000 rpm 450 N at 4000 rpm 490 N at 3000 rpm 560 N at 2000 rpm 710 N at 1000 rpm
Maximum axial force Fa	80 N
Type of cooling	Natural convection
Length	187 mm
Centring collar diameter	60 mm
Centring collar depth	2.5 mm
Number of mounting holes	4
Mounting holes diameter	5.5 mm
Circle diameter of the mounting holes	82 mm
Product weight	2.8 kg

### Contractual warranty

Warranty period	18 months
-----------------	-----------