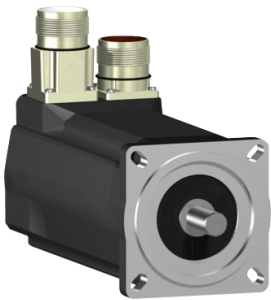


# Product data sheet

Specifications



servo motor SH3 070  
1,25Nm,key,single,nobrake,str.conn,  
IP65/IP67,8k RPM

SH30701P11A1200

## Main

Range Compatibility	PacDrive 3
Product Or Component Type	Servo motor
Device Short Name	SH3.....P

## Complementary

Maximum Mechanical Speed	8000 rpm
[Us] Rated Supply Voltage	115...480 V
Network Number Of Phases	Three phase
Continuous Stall Current	1.8 A
Continuous Stall Torque	1.25 N.m at 115...480 V three phase
Continuous Power	690 W
Peak Stall Torque	3.5 N.m at 115...480 V three phase
Nominal Output Power	220 W at 115 V single phase 440 W at 230 V single phase 820 W at 400 V three phase 950 W at 480 V three phase
Nominal Torque	1.4 N.m at 115 V single phase 1.4 N.m at 230 V single phase 1.1 N.m at 400 V three phase 1.1 N.m at 480 V three phase
Nominal Speed	1500 rpm at 115 V single phase 3000 rpm at 230 V single phase 6000 rpm at 400 V three phase 7200 rpm at 480 V three phase
Maximum Current Irms	5.7 A
Shaft End	Parallel key
Shaft Diameter	11 mm
Shaft Length	23 mm
Key Width	4 mm
Ip Degree Of Protection	IP65 motor: conforming to EN/IEC 60034-5 IP65 shaft bushing: conforming to EN/IEC 60034-5 IP67 housing: conforming to EN/IEC 60034-5
Encoder Type	Absolute single turn SinCos Hiperface
Speed Feedback Resolution	128 periods
Holding Brake	Without
Mounting Support	International standard flange
Motor Flange Size	70 mm

Disclaimer: This documentation is not intended as a substitute for and is not to be used for determining suitability or reliability of these products for specific user applications

Electrical Connection	Rotatable right angled connector
Torque Constant	0.69 N.m/A at 120 °C
Back Emf Constant	46 V/krpm at 20 °C
Number Of Motor Poles	3
Rotor Inertia	0.25 kg.cm²
Stator Resistance	10.4 Ohm
Stator Inductance	60.25 mH
Maximum Radial Force Fr	660 N at 1000 rpm 520 N at 2000 rpm 460 N at 3000 rpm 410 N at 4000 rpm 380 N at 5000 rpm 360 N at 6000 rpm
Maximum Axial Force Fa	80 N
Type Of Cooling	Natural convection
Length	154 mm
Centring Collar Diameter	60 mm
Centring Collar Depth	2.5 mm
Number Of Mounting Holes	4
Mounting Holes Diameter	5.5 mm
Circle Diameter Of The Mounting Holes	82 mm
Net Weight	2.1 kg

## Packing Units

Unit Type Of Package 1	PCE
Number Of Units In Package 1	1
Package 1 Weight	2.096 kg

## Contractual warranty

Warranty	18 months
----------	-----------

## Sustainability

**Green Premium™** label is Schneider Electric's commitment to delivering products with best-in-class environmental performance. Green Premium promises compliance with the latest regulations, transparency on environmental impacts, as well as circular and low-CO<sub>2</sub> products.

**Guide to assessing product sustainability** is a white paper that clarifies global eco-label standards and how to interpret environmental declarations.

[Learn more about Green Premium >](#)

[Guide to assess a product's sustainability >](#)



Transparency   RoHS/REACH

## Well-being performance

✓ Mercury Free

✓ Rohs Exemption Information   [Yes](#)

✓ Pvc Free

## Certifications & Standards

Reach Regulation	<a href="#">REACH Declaration</a>
Eu Rohs Directive	Pro-active compliance (Product out of EU RoHS legal scope)
China Rohs Regulation	<a href="#">China RoHS declaration</a>
Environmental Disclosure	<a href="#">Product Environmental Profile</a>
Weee	The product must be disposed on European Union markets following specific waste collection and never end up in rubbish bins
Circularity Profile	No need of specific recycling operations
California Proposition 65	WARNING: This product can expose you to chemicals including: Lead and lead compounds, which is known to the State of California to cause cancer and birth defects or other reproductive harm. For more information go to <a href="http://www.P65Warnings.ca.gov">www.P65Warnings.ca.gov</a>