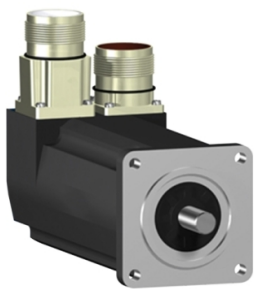


Product data sheet

Specifications



servo motor SH3 055
1,05Nm,nokey,multi,brake,str.conn,I
P54/IP65,9k RPM

SH30553P02F1000

⚠ Discontinued - Service only

⚠ Discontinued on: Mar 31, 2022

⚠ To be end-of-service on: Mar 31, 2025

Main

Range Compatibility	PacDrive 3
Product Or Component Type	Servo motor
Device Short Name	SH3.....P

Complementary

Maximum Mechanical Speed	9000 rpm
[Us] Rated Supply Voltage	115...480 V
Network Number Of Phases	Three phase
Continuous Stall Current	1.7 A
Continuous Stall Torque	1.05 N.m at 115...480 V three phase
Continuous Power	680 W
Peak Stall Torque	3.5 N.m at 115...480 V three phase
Nominal Output Power	240 W at 115 V single phase 460 W at 230 V single phase 880 W at 400 V three phase 970 W at 480 V three phase
Nominal Torque	1.13 N.m at 115 V single phase 1.1 N.m at 230 V single phase 0.81 N.m at 400 V three phase 0.81 N.m at 480 V three phase
Nominal Speed	4000 rpm at 230 V single phase 9000 rpm at 480 V three phase 2000 rpm at 115 V single phase 8000 rpm at 400 V three phase
Maximum Current Irms	6.5 A
Shaft End	Smooth shaft
Shaft Diameter	9 mm
Shaft Length	20 mm
Ip Degree Of Protection	IP54 shaft bushing without shaft seal ring: conforming to EN/IEC 60034-5 IP65 motor: conforming to EN/IEC 60034-5 IP65 shaft bushing: conforming to EN/IEC 60034-5
Encoder Type	Absolute multiturn SinCos Hiperface
Speed Feedback Resolution	128 periods
Holding Brake	With
Holding Torque	0.8 N.m

Disclaimer: This documentation is not intended as a substitute for and is not to be used for determining suitability or reliability of these products for specific user applications

Mounting Support	International standard flange
Motor Flange Size	55 mm
Electrical Connection	Straight connector
Torque Constant	0.62 N.m/A at 120 °C
Back Emf Constant	41 V/krpm at 20 °C
Number Of Motor Poles	3
Rotor Inertia	0.155 kg.cm²
Stator Resistance	10.4 Ohm
Stator Inductance	37.98 mH
Maximum Radial Force Fr	190 N at 8000 rpm 390 N at 1000 rpm 310 N at 2000 rpm 270 N at 3000 rpm 240 N at 4000 rpm 230 N at 5000 rpm 210 N at 6000 rpm 200 N at 7000 rpm
Maximum Axial Force Fa	40 N
Type Of Cooling	Natural convection
Length	203 mm
Centring Collar Diameter	40 mm
Centring Collar Depth	2 mm
Number Of Mounting Holes	4
Mounting Holes Diameter	5.5 mm
Circle Diameter Of The Mounting Holes	63 mm
Net Weight	1.9 kg

Packing Units

Unit Type Of Package 1	PCE
Number Of Units In Package 1	1
Package 1 Height	18.999 cm
Package 1 Width	11.506 cm
Package 1 Length	39.497 cm
Package 1 Weight	1.93 kg

Contractual warranty

Warranty	18 months
----------	-----------

Sustainability

Green Premium™ label is Schneider Electric's commitment to delivering products with best-in-class environmental performance. Green Premium promises compliance with the latest regulations, transparency on environmental impacts, as well as circular and low-CO₂ products.

Guide to assessing product sustainability is a white paper that clarifies global eco-label standards and how to interpret environmental declarations.

[Learn more about Green Premium >](#)

[Guide to assess a product's sustainability >](#)



Transparency RoHS/REACH

Well-being performance

✓ Mercury Free

✓ Rohs Exemption Information [Yes](#)

✓ Pvc Free

Certifications & Standards

Reach Regulation	REACH Declaration
Eu Rohs Directive	Pro-active compliance (Product out of EU RoHS legal scope)
China Rohs Regulation	China RoHS declaration
Environmental Disclosure	Product Environmental Profile
Weee	The product must be disposed on European Union markets following specific waste collection and never end up in rubbish bins
Circularity Profile	No need of specific recycling operations
California Proposition 65	WARNING: This product can expose you to chemicals including: Lead and lead compounds, which is known to the State of California to cause cancer and birth defects or other reproductive harm. For more information go to www.P65Warnings.ca.gov