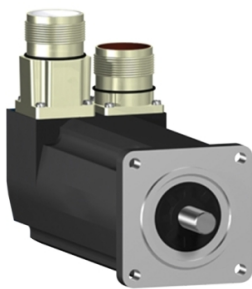


# Product data sheet

Specifications



servo motor SH3 055  
1,05Nm,nokey,multi,nobrake,str.con  
n,IP54/IP65,9k RPM

SH30553P02A1000

⚠ Discontinued on: Jun 30, 2023

⚠ Discontinued

## Main

|                           |             |
|---------------------------|-------------|
| Range Compatibility       | PacDrive 3  |
| Product Or Component Type | Servo motor |
| Device Short Name         | SH3.....P   |

## Complementary

|                           |                                                                                                                                                                          |
|---------------------------|--------------------------------------------------------------------------------------------------------------------------------------------------------------------------|
| Maximum Mechanical Speed  | 9000 rpm                                                                                                                                                                 |
| [Us] Rated Supply Voltage | 115...480 V                                                                                                                                                              |
| Network Number Of Phases  | Three phase                                                                                                                                                              |
| Continuous Stall Current  | 1.7 A                                                                                                                                                                    |
| Continuous Stall Torque   | 1.05 N.m at 115...480 V three phase                                                                                                                                      |
| Continuous Power          | 680 W                                                                                                                                                                    |
| Peak Stall Torque         | 3.5 N.m at 115...480 V three phase                                                                                                                                       |
| Nominal Output Power      | 240 W at 115 V single phase<br>460 W at 230 V single phase<br>880 W at 400 V three phase<br>970 W at 480 V three phase                                                   |
| Nominal Torque            | 1.13 N.m at 115 V single phase<br>1.1 N.m at 230 V single phase<br>0.81 N.m at 400 V three phase<br>0.81 N.m at 480 V three phase                                        |
| Nominal Speed             | 4000 rpm at 230 V single phase<br>9000 rpm at 480 V three phase<br>2000 rpm at 115 V single phase<br>8000 rpm at 400 V three phase                                       |
| Maximum Current Irms      | 6.5 A                                                                                                                                                                    |
| Shaft End                 | Smooth shaft                                                                                                                                                             |
| Shaft Diameter            | 9 mm                                                                                                                                                                     |
| Shaft Length              | 20 mm                                                                                                                                                                    |
| Ip Degree Of Protection   | IP54 shaft bushing without shaft seal ring: conforming to EN/IEC 60034-5<br>IP65 motor: conforming to EN/IEC 60034-5<br>IP65 shaft bushing: conforming to EN/IEC 60034-5 |
| Encoder Type              | Absolute multiturn SinCos Hiperface                                                                                                                                      |
| Speed Feedback Resolution | 128 periods                                                                                                                                                              |
| Holding Brake             | Without                                                                                                                                                                  |
| Mounting Support          | International standard flange                                                                                                                                            |
| Motor Flange Size         | 55 mm                                                                                                                                                                    |

Disclaimer: This documentation is not intended as a substitute for and is not to be used for determining suitability or reliability of these products for specific user applications

|                                       |                                                                                                                                                                      |
|---------------------------------------|----------------------------------------------------------------------------------------------------------------------------------------------------------------------|
| Electrical Connection                 | Straight connector                                                                                                                                                   |
| Torque Constant                       | 0.62 N.m/A at 120 °C                                                                                                                                                 |
| Back Emf Constant                     | 41 V/krpm at 20 °C                                                                                                                                                   |
| Number Of Motor Poles                 | 3                                                                                                                                                                    |
| Rotor Inertia                         | 0.134 kg.cm <sup>2</sup>                                                                                                                                             |
| Stator Resistance                     | 10.4 Ohm                                                                                                                                                             |
| Stator Inductance                     | 37.98 mH                                                                                                                                                             |
| Maximum Radial Force Fr               | 190 N at 8000 rpm<br>390 N at 1000 rpm<br>310 N at 2000 rpm<br>270 N at 3000 rpm<br>240 N at 4000 rpm<br>230 N at 5000 rpm<br>210 N at 6000 rpm<br>200 N at 7000 rpm |
| Maximum Axial Force Fa                | 40 N                                                                                                                                                                 |
| Type Of Cooling                       | Natural convection                                                                                                                                                   |
| Length                                | 176.5 mm                                                                                                                                                             |
| Centring Collar Diameter              | 40 mm                                                                                                                                                                |
| Centring Collar Depth                 | 2 mm                                                                                                                                                                 |
| Number Of Mounting Holes              | 4                                                                                                                                                                    |
| Mounting Holes Diameter               | 5.5 mm                                                                                                                                                               |
| Circle Diameter Of The Mounting Holes | 63 mm                                                                                                                                                                |
| Net Weight                            | 1.8 kg                                                                                                                                                               |

## Packing Units

|                              |          |
|------------------------------|----------|
| Unit Type Of Package 1       | PCE      |
| Number Of Units In Package 1 | 1        |
| Package 1 Height             | 11.5 cm  |
| Package 1 Width              | 19.0 cm  |
| Package 1 Length             | 39.5 cm  |
| Package 1 Weight             | 1.796 kg |

## Contractual warranty

|          |           |
|----------|-----------|
| Warranty | 18 months |
|----------|-----------|

## Sustainability

**Green Premium™** label is Schneider Electric's commitment to delivering products with best-in-class environmental performance. Green Premium promises compliance with the latest regulations, transparency on environmental impacts, as well as circular and low-CO<sub>2</sub> products.

**Guide to assessing product sustainability** is a white paper that clarifies global eco-label standards and how to interpret environmental declarations.

[Learn more about Green Premium >](#)

[Guide to assess a product's sustainability >](#)



Transparency   RoHS/REACH

## Well-being performance

✓ Mercury Free

✓ Rohs Exemption Information   [Yes](#)

✓ Pvc Free

## Certifications & Standards

|                           |                                                                                                                                                                                                                                                                                             |
|---------------------------|---------------------------------------------------------------------------------------------------------------------------------------------------------------------------------------------------------------------------------------------------------------------------------------------|
| Reach Regulation          | <a href="#">REACH Declaration</a>                                                                                                                                                                                                                                                           |
| Eu Rohs Directive         | Pro-active compliance (Product out of EU RoHS legal scope)                                                                                                                                                                                                                                  |
| China Rohs Regulation     | <a href="#">China RoHS declaration</a>                                                                                                                                                                                                                                                      |
| Environmental Disclosure  | <a href="#">Product Environmental Profile</a>                                                                                                                                                                                                                                               |
| Weee                      | The product must be disposed on European Union markets following specific waste collection and never end up in rubbish bins                                                                                                                                                                 |
| Circularity Profile       | No need of specific recycling operations                                                                                                                                                                                                                                                    |
| California Proposition 65 | WARNING: This product can expose you to chemicals including: Lead and lead compounds, which is known to the State of California to cause cancer and birth defects or other reproductive harm. For more information go to <a href="http://www.P65Warnings.ca.gov">www.P65Warnings.ca.gov</a> |