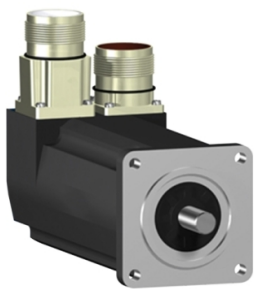


# Product data sheet

Specifications



servo motor SH3 055  
0,71Nm,nokey,single,brake,str.conn,  
IP65/IP65,9k RPM

SH30552P01F1100

⚠ Discontinued on: Jun 30, 2023

⚠ Discontinued

## Main

Range Compatibility	PacDrive 3
Product Or Component Type	Servo motor
Device Short Name	SH3.....P

## Complementary

Maximum Mechanical Speed	9000 rpm
[Us] Rated Supply Voltage	115...480 V
Network Number Of Phases	Three phase
Continuous Stall Current	1.2 A
Continuous Stall Torque	0.71 N.m at 115...480 V three phase
Continuous Power	530 W
Peak Stall Torque	2.5 N.m at 115...480 V three phase
Nominal Output Power	160 W at 115 V single phase 310 W at 230 V single phase 600 W at 400 V three phase 670 W at 480 V three phase
Nominal Torque	0.77 N.m at 115 V single phase 0.75 N.m at 230 V single phase 0.63 N.m at 400 V three phase 0.63 N.m at 480 V three phase
Nominal Speed	4000 rpm at 230 V single phase 9000 rpm at 480 V three phase 2000 rpm at 115 V single phase 8000 rpm at 400 V three phase
Maximum Current Irms	4.8 A
Shaft End	Smooth shaft
Shaft Diameter	9 mm
Shaft Length	20 mm
Ip Degree Of Protection	IP65 motor: conforming to IEC 60034-5 IP65 shaft bushing: conforming to IEC 60034-5
Encoder Type	Absolute single turn SinCos Hiperface
Speed Feedback Resolution	128 periods
Holding Brake	With
Holding Torque	0.8 N.m
Mounting Support	International standard flange

Disclaimer: This documentation is not intended as a substitute for and is not to be used for determining suitability or reliability of these products for specific user applications

Motor Flange Size	55 mm
Electrical Connection	Straight connector
Torque Constant	0.59 N.m/A at 120 °C
Back Emf Constant	40 V/krpm at 20 °C
Number Of Motor Poles	3
Rotor Inertia	0.117 kg.cm²
Stator Resistance	17.4 Ohm
Stator Inductance	53.54 mH
Maximum Radial Force Fr	370 N at 1000 rpm 290 N at 2000 rpm 260 N at 3000 rpm 230 N at 4000 rpm 220 N at 5000 rpm 200 N at 6000 rpm 190 N at 7000 rpm 190 N at 8000 rpm
Maximum Axial Force Fa	40 N
Type Of Cooling	Natural convection
Length	181 mm
Centring Collar Diameter	40 mm
Centring Collar Depth	2 mm
Number Of Mounting Holes	4
Mounting Holes Diameter	5.5 mm
Circle Diameter Of The Mounting Holes	63 mm
Net Weight	1.6 kg

## Packing Units

Unit Type Of Package 1	PCE
Number Of Units In Package 1	1
Package 1 Weight	1.497 kg

## Contractual warranty

Warranty	18 months
----------	-----------

## Sustainability

**Green Premium™** label is Schneider Electric's commitment to delivering products with best-in-class environmental performance. Green Premium promises compliance with the latest regulations, transparency on environmental impacts, as well as circular and low-CO<sub>2</sub> products.

**Guide to assessing product sustainability** is a white paper that clarifies global eco-label standards and how to interpret environmental declarations.

[Learn more about Green Premium >](#)

[Guide to assess a product's sustainability >](#)



Transparency   RoHS/REACH

## Well-being performance

✓ Mercury Free

✓ Rohs Exemption Information   [Yes](#)

✓ Pvc Free

## Certifications & Standards

Reach Regulation	<a href="#">REACH Declaration</a>
Eu Rohs Directive	Pro-active compliance (Product out of EU RoHS legal scope)
China Rohs Regulation	<a href="#">China RoHS declaration</a>
Environmental Disclosure	<a href="#">Product Environmental Profile</a>
Weee	The product must be disposed on European Union markets following specific waste collection and never end up in rubbish bins
Circularity Profile	No need of specific recycling operations
California Proposition 65	WARNING: This product can expose you to chemicals including: Lead and lead compounds, which is known to the State of California to cause cancer and birth defects or other reproductive harm. For more information go to <a href="http://www.P65Warnings.ca.gov">www.P65Warnings.ca.gov</a>