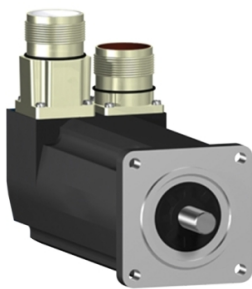


# Product data sheet

Specifications



servo motor SH3 055 0,42Nm,no  
key,multi,no brake,str. conn,IP65/  
IP65,9k RPM

SH30551P02A1100

⚠ Discontinued on: Jun 30, 2023

⚠ Discontinued

## Main

Range Compatibility	PacDrive 3
Product Or Component Type	Servo motor
Device Short Name	SH3.....P

## Complementary

Maximum Mechanical Speed	9000 rpm
[Us] Rated Supply Voltage	115...480 V
Network Number Of Phases	Three phase
Continuous Stall Current	0.73 A
Continuous Stall Torque	0.42 N.m at 115...480 V three phase
Continuous Power	290 W
Peak Stall Torque	1.5 N.m at 115...480 V three phase
Nominal Output Power	100 W at 115 V single phase 210 W at 230 V single phase 400 W at 400 V three phase 440 W at 480 V three phase
Nominal Torque	0.5 N.m at 115 V single phase 0.5 N.m at 230 V single phase 0.35 N.m at 400 V three phase 0.35 N.m at 480 V three phase
Nominal Speed	9000 rpm at 480 V three phase 2000 rpm at 115 V single phase 8000 rpm at 230 V single phase 8000 rpm at 400 V three phase
Maximum Current Irms	2.9 A
Shaft End	Smooth shaft
Shaft Diameter	9 mm
Shaft Length	20 mm
Ip Degree Of Protection	IP65 motor: conforming to IEC 60034-5 IP65 shaft bushing: conforming to IEC 60034-5
Encoder Type	Absolute multiturn SinCos Hiperface
Speed Feedback Resolution	128 periods
Holding Brake	Without
Mounting Support	International standard flange
Motor Flange Size	55 mm

Disclaimer: This documentation is not intended as a substitute for and is not to be used for determining suitability or reliability of these products for specific user applications

Electrical Connection	Straight connector
Torque Constant	0.58 N.m/A at 120 °C
Back Emf Constant	40 V/krpm at 20 °C
Number Of Motor Poles	3
Rotor Inertia	0.059 kg.cm²
Stator Resistance	41.8 Ohm
Stator Inductance	108.72 mH
Maximum Radial Force Fr	340 N at 1000 rpm 270 N at 2000 rpm 240 N at 3000 rpm 220 N at 4000 rpm 200 N at 5000 rpm 190 N at 6000 rpm 180 N at 7000 rpm 170 N at 8000 rpm
Maximum Axial Force Fa	40 N
Type Of Cooling	Natural convection
Length	132.5 mm
Centring Collar Diameter	40 mm
Centring Collar Depth	2 mm
Number Of Mounting Holes	4
Mounting Holes Diameter	5.5 mm
Circle Diameter Of The Mounting Holes	63 mm
Net Weight	1.2 kg

## Packing Units

Unit Type Of Package 1	PCE
Number Of Units In Package 1	1
Package 1 Weight	1.198 kg

## Contractual warranty

Warranty	18 months
----------	-----------

## Sustainability

**Green Premium™** label is Schneider Electric's commitment to delivering products with best-in-class environmental performance. Green Premium promises compliance with the latest regulations, transparency on environmental impacts, as well as circular and low-CO<sub>2</sub> products.

**Guide to assessing product sustainability** is a white paper that clarifies global eco-label standards and how to interpret environmental declarations.

[Learn more about Green Premium >](#)

[Guide to assess a product's sustainability >](#)



Transparency   RoHS/REACH

## Well-being performance

✓ Mercury Free

✓ Rohs Exemption Information   [Yes](#)

✓ Pvc Free

## Certifications & Standards

Reach Regulation	<a href="#">REACH Declaration</a>
Eu Rohs Directive	Pro-active compliance (Product out of EU RoHS legal scope)
China Rohs Regulation	<a href="#">China RoHS declaration</a>
Environmental Disclosure	<a href="#">Product Environmental Profile</a>
Weee	The product must be disposed on European Union markets following specific waste collection and never end up in rubbish bins
Circularity Profile	No need of specific recycling operations
California Proposition 65	WARNING: This product can expose you to chemicals including: Lead and lead compounds, which is known to the State of California to cause cancer and birth defects or other reproductive harm. For more information go to <a href="http://www.P65Warnings.ca.gov">www.P65Warnings.ca.gov</a>