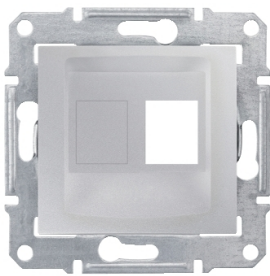



Product data sheet

Specifications



Sedna plate, single; AMP, MOLEX, KELINE, cat5e, cat6 UTP (wo connector), alum

SDN4300660

 **Discontinued on:** Dec 30, 2023

 **Discontinued**

Main

Range Name	Sedna
Function	Central plate
Delivery Form	Without frame
Socket Number	1
Product Compatibility	AMP modular jack Cat. 5e UTP AMP modular jack Cat. 6 UTP Molex modular jack Cat. 5e UTP Molex modular jack Cat. 6 UTP Keline modular jack Cat. 5e UTP Keline modular jack Cat. 6 UTP

Complementary

Fixing Mode	Claws, span of claws working range: 51...80 mm Screws
Height	71 mm
Width	71 mm
Depth	36 mm
Depth Of Visual Part	7 mm
Net Weight	0.07453 kg
Material Of Visible Parts	Thermoplastic ABS-UV stabilised
Surface Finish	Glossy

Packing Units

Unit Type Of Package 1	PCE
Number Of Units In Package 1	1
Package 1 Height	7.1 cm
Package 1 Width	7.1 cm
Package 1 Length	3.6 cm
Package 1 Weight	74.53 g
Unit Type Of Package 2	BB1
Number Of Units In Package 2	10
Package 2 Height	9.1 cm
Package 2 Width	18.5 cm

Disclaimer: This documentation is not intended as a substitute for and is not to be used for determining suitability or reliability of these products for specific user applications

Package 2 Length	27.5 cm
Package 2 Weight	1.033 kg
Unit Type Of Package 3	CAR
Number Of Units In Package 3	100
Package 3 Weight	7.453 kg

Sustainability





Green Premium™ label is Schneider Electric's commitment to delivering products with best-in-class environmental performance. Green Premium promises compliance with the latest regulations, transparency on environmental impacts, as well as circular and low-CO₂ products.

Guide to assessing product sustainability is a white paper that clarifies global eco-label standards and how to interpret environmental declarations.

[Learn more about Green Premium >](#)

[Guide to assess a product's sustainability >](#)

Well-being performance

 Reach Free Of Svhc	
 Toxic Heavy Metal Free	
 Mercury Free	
 Rohs Exemption Information	Yes
Reach Regulation	REACH Declaration
Eu Rohs Directive	Compliant EU RoHS Declaration
China Rohs Regulation	China RoHS declaration Pro-active China RoHS declaration (out of China RoHS legal scope)
Weee	The product must be disposed on European Union markets following specific waste collection and never end up in rubbish bins
Circularity Profile	No need of specific recycling operations