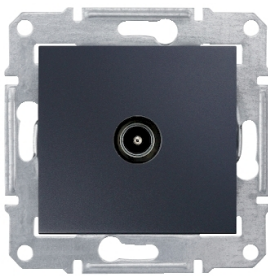


Product data sheet

Specifications



Sedna - TV connector - 1dB without frame graphite

SDN3201670

⚠ Discontinued on: Dec 30, 2023

⚠ Discontinued

Main

Range Name	Sedna
Range	Sedna
Function	TV socket
Device Application	Media device support
Delivery Form	Mechanism with central plate
Tv Socket Type	End-of-line (terminal socket)
Device Composition	Support ring
Cover Plate Color	Graphite

Complementary

Tv Connector Type	1 male IEC 9.52 mm
Number Of Outputs	1
Through Loss	1 dB
Attenuation	1 dB for TV signal for 5...862 MHz frequency
Connections - Terminals	Screw terminals
Material Of Visible Parts	Thermoplastic ABS-UV stabilised
Kind Of Terminals	Glossy
Installation	Flush
Fixing Mode	Claws, span of claws working range: 51...80 mm Screws
Height	70 mm
Width	64 mm
Depth	40 mm
Depth Of Visual Part	14.6 mm
Net Weight	0.07722 kg

Environment

Conformity Mark	CE
Ip Degree Of Protection	IP20

Packing Units

Disclaimer: This documentation is not intended as a substitute for and is not to be used for determining suitability or reliability of these products for specific user applications

Unit Type Of Package 1	PCE
Number Of Units In Package 1	1
Package 1 Height	4.000 cm
Package 1 Width	7.000 cm
Package 1 Length	7.000 cm
Package 1 Weight	69.800 g
Unit Type Of Package 2	BB1
Number Of Units In Package 2	10
Package 2 Height	9.500 cm
Package 2 Width	18.500 cm
Package 2 Length	27.500 cm
Package 2 Weight	773.000 g
Unit Type Of Package 3	S04
Number Of Units In Package 3	120
Package 3 Height	30.000 cm
Package 3 Width	40.000 cm
Package 3 Length	60.000 cm
Package 3 Weight	9.701 kg

Sustainability

Green Premium™ label is Schneider Electric's commitment to delivering products with best-in-class environmental performance. Green Premium promises compliance with the latest regulations, transparency on environmental impacts, as well as circular and low-CO₂ products.

Guide to assessing product sustainability is a white paper that clarifies global eco-label standards and how to interpret environmental declarations.

[Learn more about Green Premium >](#)

[Guide to assess a product's sustainability >](#)



RoHS/REACH

Well-being performance

✓	Reach Free Of Svhc	
✓	Toxic Heavy Metal Free	
✓	Mercury Free	
✓	Rohs Exemption Information	Yes

Certifications & Standards

Reach Regulation	REACH Declaration
Eu Rohs Directive	Compliant EU RoHS Declaration
China Rohs Regulation	China RoHS declaration Pro-active China RoHS declaration (out of China RoHS legal scope)
Weee	The product must be disposed on European Union markets following specific waste collection and never end up in rubbish bins
Circularity Profile	No need of specific recycling operations