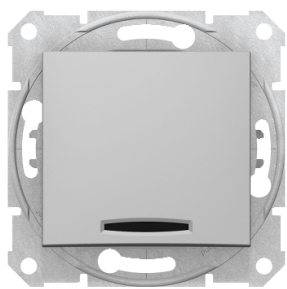


Product data sheet

Specifications



Sedna - 1pole pushbutton - 10A locator light, aluminium

SDN1600160

⚠ Discontinued on: Dec 30, 2023

⚠ Discontinued

Main

Range	Sedna
Product Or Component Type	Push-button
Device Presentation	Mechanism with fixing frame
Device Application	Control
Switch Function	1-pole push-button
Colour Tint	Aluminium

Complementary

Device Mounting	Flush
Surface Finish	Glossy
Marking	Without marking
Kind Of Terminals	Screwless terminals
Power Range	2300 W
Wire Structure	Flexible Rigid
Wire Stripping Length	13 mm
Fixing Mode	Claws, span of claws working range: 51...70 mm Screws
Height	71 mm
Width	71 mm
Depth	37 mm
Depth Of Visual Part	12 mm
Net Weight	0.07356 kg
Market Segment	Residential Small commercial

Environment

Ip Degree Of Protection	IP20
Conformity Mark	CE
Product Certifications	GOST-R
Standards	IEC 60669-1

Disclaimer: This documentation is not intended as a substitute for and is not to be used for determining suitability or reliability of these products for specific user applications

Packing Units

Unit Type Of Package 1	PCE
Number Of Units In Package 1	1
Package 1 Height	4.200 cm
Package 1 Width	7.100 cm
Package 1 Length	7.100 cm
Package 1 Weight	74.000 g
Unit Type Of Package 2	BB1
Number Of Units In Package 2	10
Package 2 Height	9.400 cm
Package 2 Width	18.500 cm
Package 2 Length	27.500 cm
Package 2 Weight	840.000 kg
Unit Type Of Package 3	S04
Number Of Units In Package 3	120
Package 3 Height	30.000 cm
Package 3 Width	40.000 cm
Package 3 Length	60.000 cm
Package 3 Weight	10972.000 kg

Contractual warranty

Warranty	18 months
----------	-----------

Sustainability

Green Premium™ label is Schneider Electric’s commitment to delivering products with best-in-class environmental performance. Green Premium promises compliance with the latest regulations, transparency on environmental impacts, as well as circular and low-CO₂ products.

Guide to assessing product sustainability is a white paper that clarifies global eco-label standards and how to interpret environmental declarations.

[Learn more about Green Premium >](#)

[Guide to assess a product’s sustainability >](#)



Transparency RoHS/REACH

Well-being performance

✓	Reach Free Of Svhc	
✓	Toxic Heavy Metal Free	
✓	Mercury Free	
✓	Rohs Exemption Information	Yes

Certifications & Standards

Reach Regulation	REACH Declaration
Eu Rohs Directive	Compliant EU RoHS Declaration
China Rohs Regulation	China RoHS declaration Pro-active China RoHS declaration (out of China RoHS legal scope)
Environmental Disclosure	Product Environmental Profile
Weee	The product must be disposed on European Union markets following specific waste collection and never end up in rubbish bins
Circularity Profile	No need of specific recycling operations