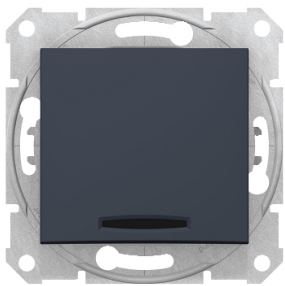


Product data sheet

Specifications



Sedna - intermediate switch - 10AX locator light, graphite

SDN0501170

⚠ Discontinued on: Dec 30, 2023

⚠ Discontinued

Main

Range	Sedna
Product Or Component Type	Switch
Device Presentation	Mechanism with fixing frame
Device Application	Control
Switch Function	Intermediate
Colour Tint	Graphite

Complementary

Device Mounting	Flush
Surface Finish	Glossy
Kind Of Terminals	Screwless terminals
Accessory / Separate Part Type	Claw and screw for mechanism
Power Range	2300 W
Wire Structure	Rigid Flexible
Wire Stripping Length	13 mm
Fixing Mode	Claws, span of claws working range: 51...70 mm Screws
Height	71 mm
Width	71 mm
Depth	37 mm
Depth Of Visual Part	12 mm
Net Weight	0.07982 kg
Market Segment	Residential Small commercial

Environment

Ip Degree Of Protection	IP20
Conformity Mark	CE
Product Certifications	GOST-R
Standards	IEC 60669-1

Disclaimer: This documentation is not intended as a substitute for and is not to be used for determining suitability or reliability of these products for specific user applications

Packing Units

Unit Type Of Package 1	PCE
Number Of Units In Package 1	1
Package 1 Height	4.000 cm
Package 1 Width	7.000 cm
Package 1 Length	7.000 cm
Package 1 Weight	67.400 g
Unit Type Of Package 2	BB1
Number Of Units In Package 2	10
Package 2 Height	9.500 cm
Package 2 Width	18.500 cm
Package 2 Length	27.500 cm
Package 2 Weight	754.000 g
Unit Type Of Package 3	S04
Number Of Units In Package 3	120
Package 3 Height	30.000 cm
Package 3 Width	40.000 cm
Package 3 Length	60.000 cm
Package 3 Weight	9.699 kg

Sustainability

Green Premium™ label is Schneider Electric's commitment to delivering products with best-in-class environmental performance. Green Premium promises compliance with the latest regulations, transparency on environmental impacts, as well as circular and low-CO₂ products.

Guide to assessing product sustainability is a white paper that clarifies global eco-label standards and how to interpret environmental declarations.

[Learn more about Green Premium >](#)

[Guide to assess a product's sustainability >](#)



Transparency RoHS/REACH

Well-being performance

✓ Reach Free Of Svhc

✓ Toxic Heavy Metal Free

✓ Mercury Free

✓ Rohs Exemption Information Yes

Certifications & Standards

Reach Regulation	REACH Declaration
Eu Rohs Directive	Compliant EU RoHS Declaration
China Rohs Regulation	China RoHS declaration Pro-active China RoHS declaration (out of China RoHS legal scope)
Environmental Disclosure	Product Environmental Profile
Circularity Profile	No need of specific recycling operations