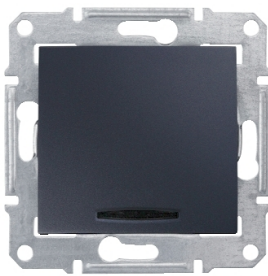


# Product data sheet

Specifications



## Sedna - 1pole 2way switch - 10AX indicator light, graphite

SDN0401170

⚠ Discontinued on: Apr 12, 2019

⚠ End-of-service on: Mar 27, 2020

⚠ Discontinued

### Main

Range	Sedna
Product Or Component Type	Switch
Device Presentation	Mechanism with fixing frame
Device Application	Control
Switch Function	1-pole 2-way
Colour Tint	Graphite

### Complementary

Device Mounting	Flush
Surface Finish	Glossy
Kind Of Terminals	Screwless terminals
Accessory / Separate Part Type	Claw and screw for mechanism
Power Range	2300 W
Wire Structure	Flexible Rigid
Wire Stripping Length	13 mm
Fixing Mode	Claws, span of claws working range: 51...70 mm Screws
Height	71 mm
Width	71 mm
Depth	37 mm
Depth Of Visual Part	12 mm
Net Weight	0.059995 kg
Market Segment	Small commercial Residential

### Environment

Ip Degree Of Protection	IP20
Conformity Mark	CE
Product Certifications	GOST-R
Standards	IEC 60669-1

Disclaimer: This documentation is not intended as a substitute for and is not to be used for determining suitability or reliability of these products for specific user applications

# Packing Units

Unit Type Of Package 1	PCE
Number Of Units In Package 1	1
Package 1 Height	7.1 cm
Package 1 Width	4.2 cm
Package 1 Length	7.1 cm
Package 1 Weight	74 g

# Sustainability

**Green Premium™ label** is Schneider Electric’s commitment to delivering products with best-in-class environmental performance. Green Premium promises compliance with the latest regulations, transparency on environmental impacts, as well as circular and low-CO<sub>2</sub> products.

**Guide to assessing product sustainability** is a white paper that clarifies global eco-label standards and how to interpret environmental declarations.

[Learn more about Green Premium >](#)

[Guide to assess a product’s sustainability >](#)



Transparency   RoHS/REACH

## Certifications & Standards

**Eu Rohs Directive**

Pro-active compliance (Product out of EU RoHS legal scope)

[EU RoHS Declaration](#)

**Environmental Disclosure**

[Product Environmental Profile](#)