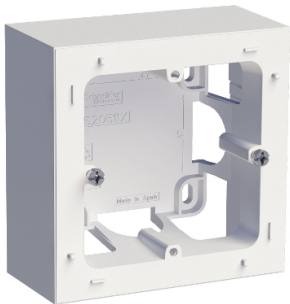


Product data sheet

Specifications



Odace - Styl - surface mounting box for mechanism - 1 gang - white

S52C762

Main

Range Of Product	Odace
Aesthetic Name	Styl
Product Or Component Type	Mounting box
Type Of Packing	Flow-pack and cardboard with eurohole

Complementary

Device Mounting	Surface
Number Of Gangs	1 gang
Cable Entry	4 knock-outs
Fixing Mode	Screws
Colour Tint	White (RAL 9003)
Surface Finish	Glossy
Material	Thermoplastic ABS-UV stabilised
Height	85 mm
Width	85 mm
Projecting Depth	37 mm
Depth	40 mm
Net Weight	0.063 kg

Environment

Standards	EN 60670-1 2006/95/EEC
Product Certifications	LCIE: NF 603415B NF
Ik Degree Of Protection	IK04
Ip Degree Of Protection	IP21D
Environmental Characteristic	Petrol Oil UV resistant Liquid soap Bleach Window-cleaning fluid Acetone Alcohol

Packing Units

Disclaimer: This documentation is not intended as a substitute for and is not to be used for determining suitability or reliability of these products for specific user applications

Unit Type Of Package 1	PCE
Number Of Units In Package 1	1
Package 1 Height	4.200 cm
Package 1 Width	8.500 cm
Package 1 Length	8.500 cm
Package 1 Weight	70.000 g
Unit Type Of Package 2	S01
Number Of Units In Package 2	5
Package 2 Height	15.000 cm
Package 2 Width	15.000 cm
Package 2 Length	40.000 cm
Package 2 Weight	641.000 kg
Unit Type Of Package 3	P06
Number Of Units In Package 3	160
Package 3 Height	77.000 cm
Package 3 Width	80.000 cm
Package 3 Length	60.000 cm
Package 3 Weight	29.268 kg

Contractual warranty

Warranty	18 months
----------	-----------

Sustainability

Green Premium™ label is Schneider Electric's commitment to delivering products with best-in-class environmental performance. Green Premium promises compliance with the latest regulations, transparency on environmental impacts, as well as circular and low-CO₂ products.

Guide to assessing product sustainability is a white paper that clarifies global eco-label standards and how to interpret environmental declarations.

[Learn more about Green Premium >](#)

[Guide to assess a product's sustainability >](#)



Transparency RoHS/REACH

Well-being performance

✓ Reach Free Of Svhc

✓ Toxic Heavy Metal Free

✓ Mercury Free

✓ Rohs Exemption Information Yes

Certifications & Standards

Reach Regulation	REACH Declaration
Eu Rohs Directive	Pro-active compliance (Product out of EU RoHS legal scope) EU RoHS Declaration
China Rohs Regulation	China RoHS declaration Pro-active China RoHS declaration (out of China RoHS legal scope)
Environmental Disclosure	Product Environmental Profile
Circularity Profile	No need of specific recycling operations